

Title: **Temple of Tuthmosis III in Deir el-Bahari in 2008 and 2009: work in the stores and field**

Author(s): Monika Dolińska

Journal: *Polish Archaeology in the Mediterranean* 21 (Research 2009)

Year: 2012

Pages: 261-267

ISSN 1234-5415 (Print), ISSN 2083-537X (Online)

ISBN 978-83-235-1144-1

Publishers: Polish Centre of Mediterranean Archaeology, University of Warsaw (PCMA UW),
Wydawnictwa Uniwersytetu Warszawskiego (WUW)

www.pcma.uw.edu.pl – www.wuw.pl

**TEMPLE OF TUTHMOSIS III
IN DEIR EL-BAHARI IN 2008 AND 2009:
WORK IN THE STORES AND FIELD**

Monika Dolińska
National Museum in Warsaw

Abstract: Continued studies of fragmentary reliefs from the Tuthmosis III temple in Deir el-Bahari, now in storage on the site, were the focus of two seasons of work in 2008 and 2009. This led to theoretical reconstructions of a number of scenes, the documentation of several blocks was revised and supplemented with previously unobserved detail, and a study of the decoration of the east wall of the Hypostyle Hall and the walls and jambs around and above the various inner doorways in the temple was carried out. Extensive re-photographing of the blocks was continued, as was the digitizing of extant documentation and its verification. Storeroom improvements, including new lighting, will ensure better work conditions in the future, as well as proper storage conditions for the reliefs.

Keywords: Deir el-Bahari, Temple of Tuthmosis III , relief decoration, theoretical reconstruction

TEMPLE OF TUTHMOSIS III IN DEIR EL-BAHARI IN 2008 AND 2009: WORK IN THE STORES AND FIELD

Monika Dolińska

National Museum in Warsaw

Abstract: Continued studies of fragmentary reliefs from the Tuthmosis III temple in Deir el-Bahari, now in storage on the site, were the focus of two seasons of work in 2008 and 2009. This led to theoretical reconstructions of a number of scenes, the documentation of several blocks was revised and supplemented with previously unobserved detail, and a study of the decoration of the east wall of the Hypostyle Hall and the walls and jambs around and above the various inner doorways in the temple was carried out. Extensive re-photographing of the blocks was continued, as was the digitizing of extant documentation and its verification. Storeroom improvements, including new lighting, will ensure better work conditions in the future, as well as proper storage conditions for the reliefs.

Keywords: Deir el-Bahari, Temple of Tuthmosis III, relief decoration, theoretical reconstruction

In the course of the two seasons the team concentrated on preserving the substance of the fragmentary reliefs from the temple of Tuthmosis III and on recording and revising material for the forthcoming publication.

The work included in particular:

1. New drawing reconstructions of scenes on the grounds of provisional sketches, making use of black&white photographic and scanned images. The following scenes from Room D were completed in this manner:

- double scene above the niche (Amon offering a sign of life to a falcon from the royal *serekh*),
- scenes with the king and a goddess on the West Wall by the corners; figure

of Amon from the last scene on the North Wall [*Fig. 1*];

- scene of offering milk, cows and bulls to Kamutef on the East Wall to the south of the entrance.

2. Digitizing of scanned drawings using Corel software.

Drawings scanned as .tiff images were vectorized in order to allow revisions and additions. Two scenes on either side of the niche in the West Wall of Room D were digitized in this manner [*Fig. 2*], as well as scenes above the doorways to Rooms D, G and H, and the two first scenes on the North wall of Room D.

3. Revision of existing drawings and adding details included a check of the exactitude of drawings made previously of the East,

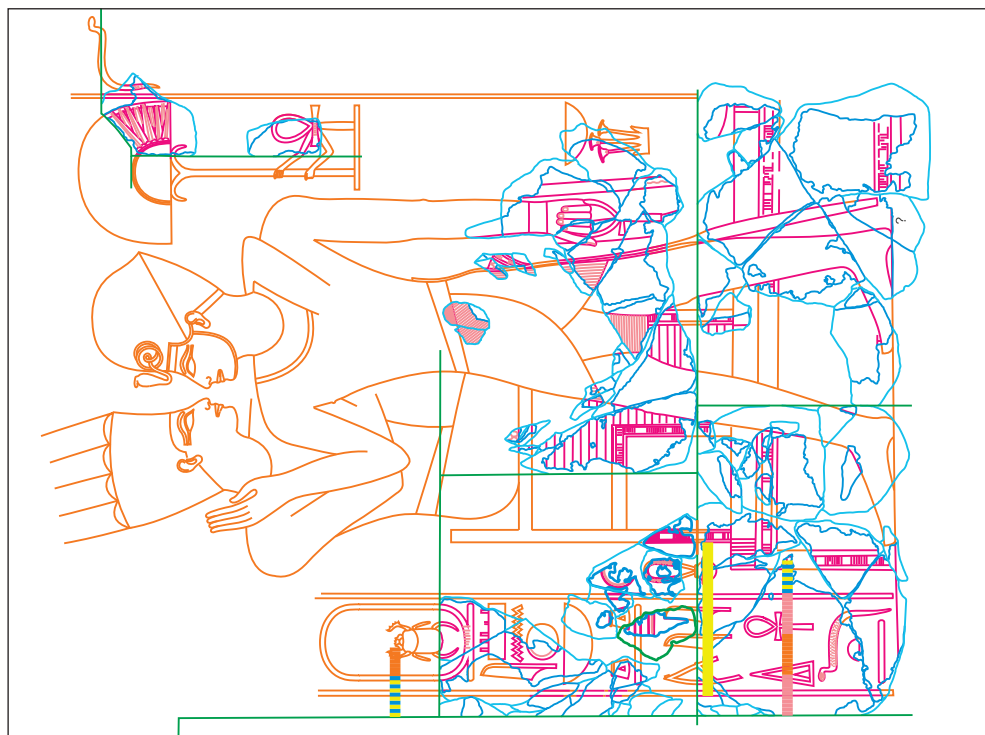


Fig. 1. Last scene on the North Wall of Room D: fragment of a figure of Amon (All drawings J. Rembiewska and M. Puszczarski)

Fig. 2. Scene next to a niche in the West Wall of Room D: the king embraced by Amon

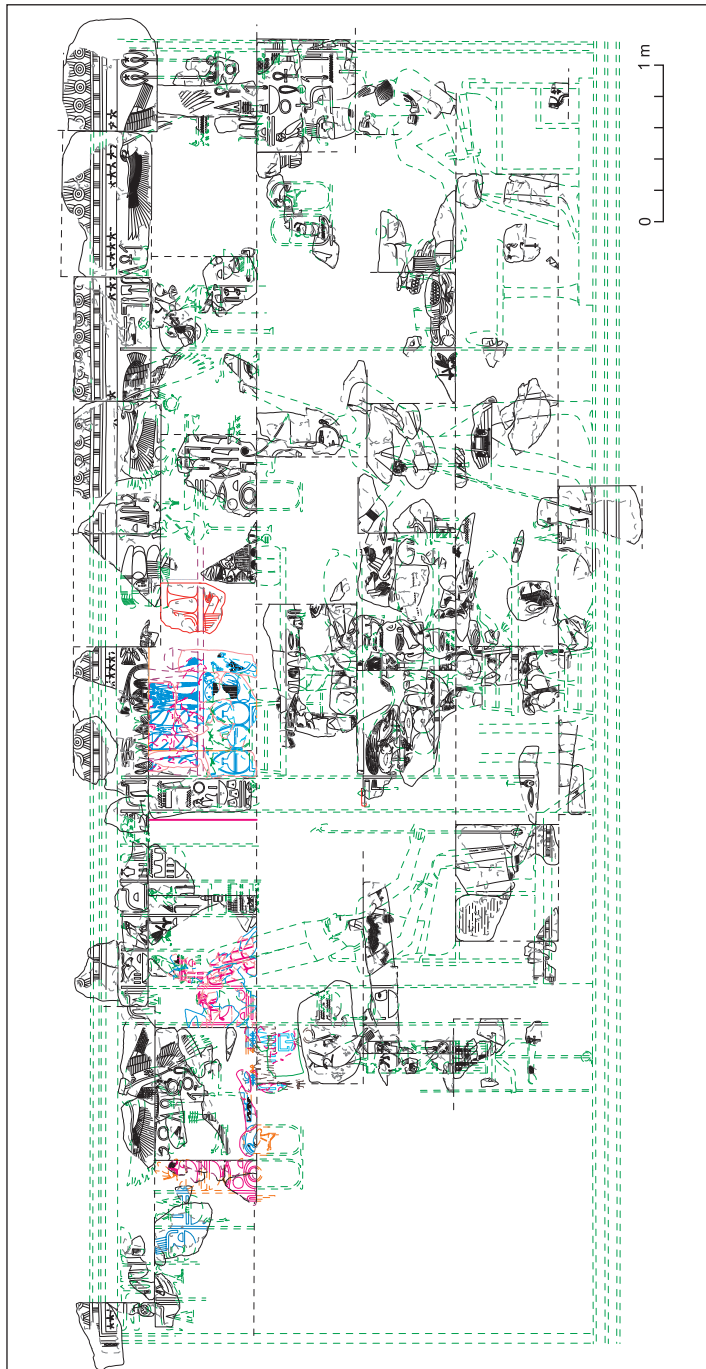


Fig. 3. North Wall of Room G with newly revised fragments



Fig. 4. Provisional photographic reconstruction of the figure of a king in atef crown from the north wall of Room H

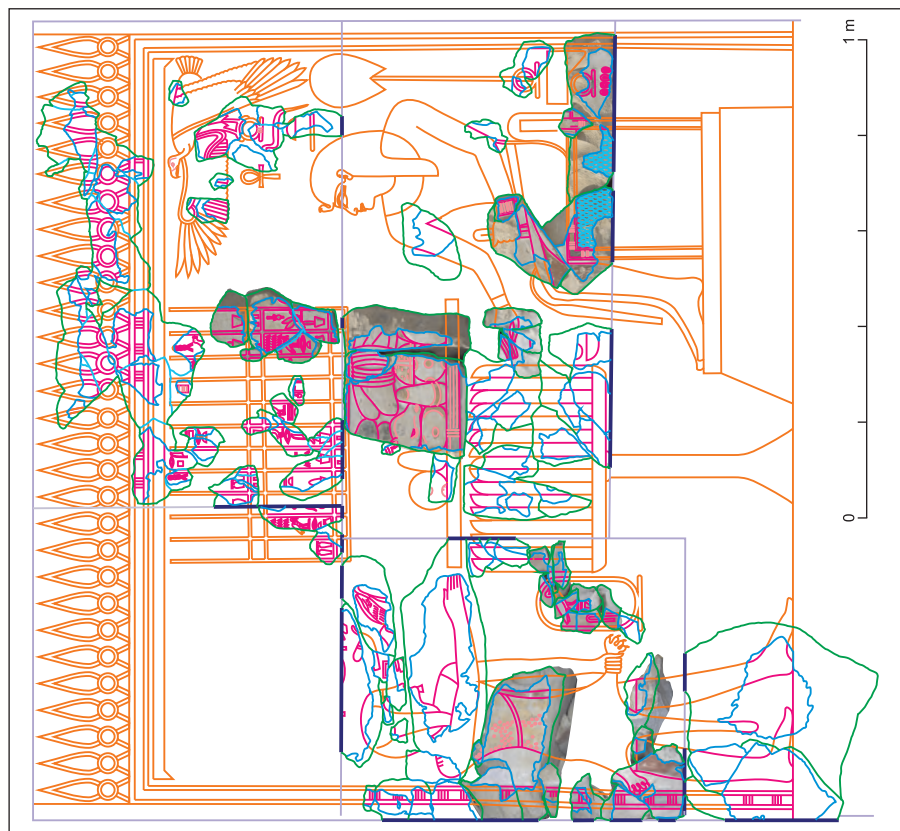


Fig. 5. Left wall of a niche with inserted available photographic images (All photos Z. Doliński)

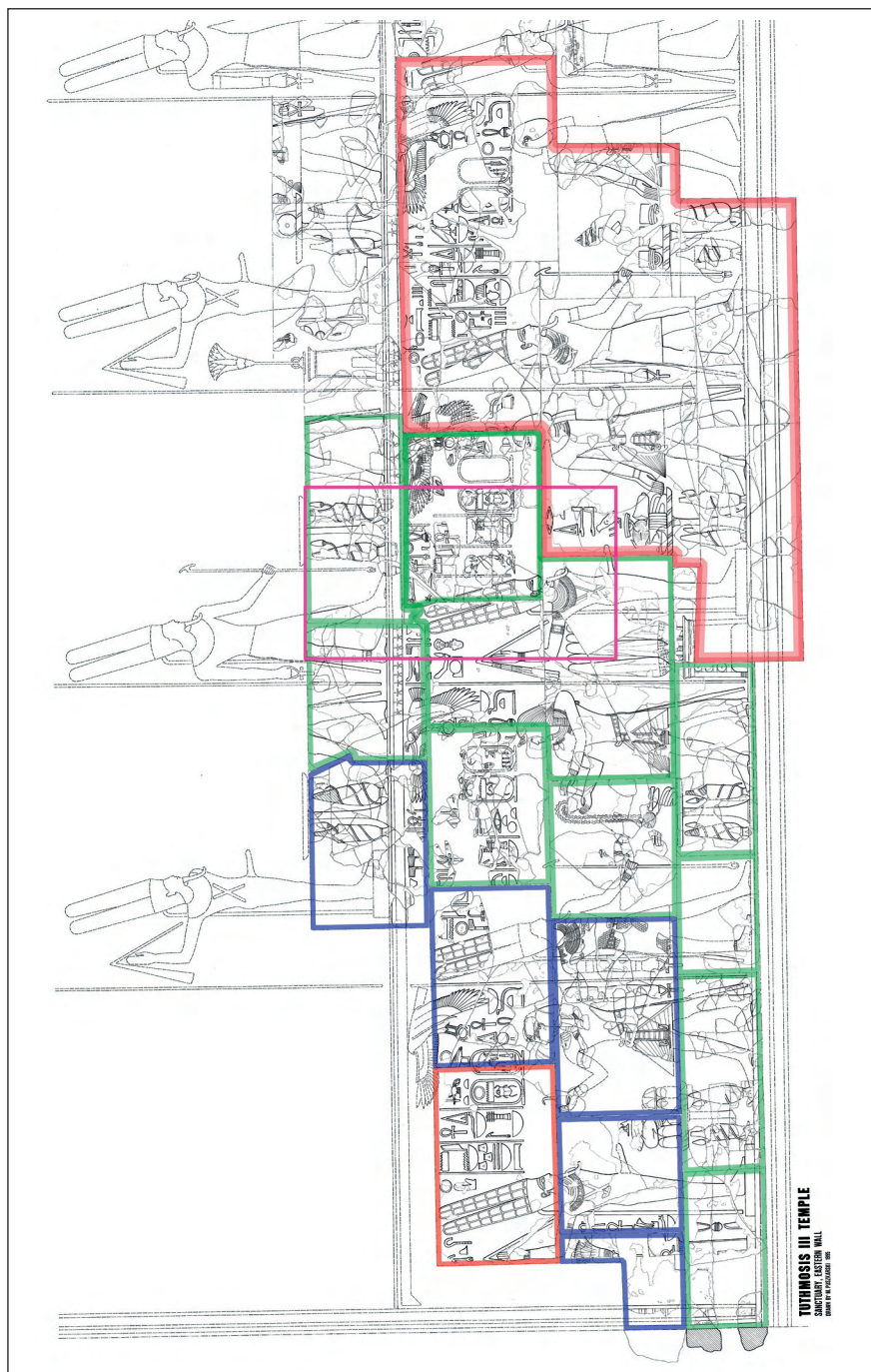


Fig. 6. Scheme of the east wall of the sanctuary; outlines in: pink – reconstructed blocks, provisionally installed in the storeroom; green – blocks prepared for installing; blue – hardened fragments prepared for rejoining; purple – outline of niche in the other side of the sanctuary wall; red – block from the Carter Store which has returned from a traveling exhibition in the United States

North and South Walls of Room H, a drawing of the North Wall of Room G [Fig. 3], drawings of walls of the niche and scenes next to the niche in Room D.

4. Photographing blocks and fragments of blocks with decoration considered as particularly important, interesting and visually appealing. An added value of this work is the preparation of a set of professional images for use in publication and promotion activities.

Fragments making up selected scenes were all photographed separately in order to prepare photographic reconstructions of whole scenes for publication [Figs 4, 5].

5. Checking drawings of all scenes from the Hypostyle Hall, locating elements of the scenes from this hall scattered in the storeroom, macro-photography of fragments for use in further studies of decoration details.

6. Study of the decoration scheme of the East Wall of the Hypostyle Hall.

7. Study of the decoration around and above the various inner doorways in the temple, including photographic documentation of fragments of door jambs.

8. Transport to the storeroom of fragments of two architraves with fairly well preserved colors of painted reliefs.

Recent heavy winter rainfall has had a detrimental effect on the stone fragments

collected in the field. Stockpiling of decorated fragments on the ground outside the storeroom, even under cover, created excessively humid conditions after the rains. It took a long time for the damp to be eliminated. Brick benches will be used from now on to store fragments with surviving polychromy in order to avoid long standing in rain-related mud and with no direct sun exposure.

9. Furnishing and supplying a field conservation lab for the purpose of completing the reconstruction of previously prepared blocks from the east wall of the sanctuary. A group of fragments was cleaned and preserved, especially those which had suffered the most from heavy rainfall in the past. One block, which had been solidified earlier, was now recomposed and prepared for installing in the sanctuary wall, which has been reconstructed provisionally inside the storeroom [Fig. 6].

10. Canvas protection in successive seasons of columns with hieratic graffiti, standing in the temple area. This procedure had to be repeated as the columns were uncovered in the team's absence between fieldwork seasons, presumably in order to use the columns as an added tourist attraction.

11. Storeroom improvements including a new lighting system, designed and

Team

Dates of work: 8 November–15 December 2009

Director: Dr. Monika Dolińska, egyptologist (National Museum in Warsaw)

SCA representative: Abdelghani Abdel Rahman Mohamed

Egyptologist: Janina Wiercińska (National Museum in Warsaw)

Photographer: Zbigniew Doliński (National Museum in Warsaw)

Documentalist: Marek Puskarski (PCMA)

Conservators: Zbigniew Godziejewski, Joanna Lis (both National Museum in Warsaw)

installed in replacement of the old and malfunctioning electric cables; new shelves in the storeroom.

12. Return of three blocks from the Carter Store recently on exhibition in the United

States (“The Quest for Immortality” shown in several American cities and towns). The blocks will be incorporated into their respective scenes, including the reconstructed sanctuary wall.

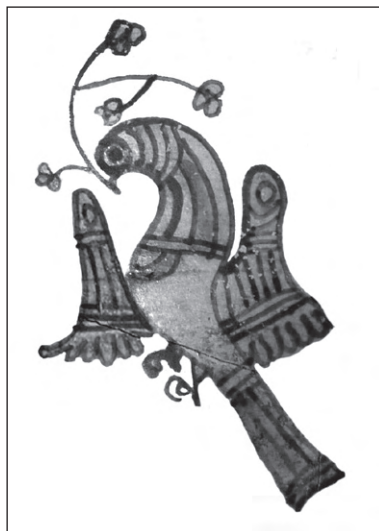
Monika Dolińska
National Museum in Warsaw
00-495 Warsaw, Poland
Al. Jerozolimskie 3
MDolinska@mnw.art.pl

POLISH CENTRE OF MEDITERRANEAN ARCHAEOLOGY
UNIVERSITY OF WARSAW

POLISH ARCHAEOLOGY IN THE MEDITERRANEAN

XXI

RESEARCH 2009



CONTENTS

CONTENTS

ACKNOWLEDGMENTS	11
OBITUARIES	
<i>Aleksandra Krzyżanowska</i>	13
ABBREVIATIONS AND STANDARD REFERENCES	15

PAM REPORTS

PCMA FIELD MISSIONS AND PROJECTS IN 2009 (WITH MAP)	19
---	----

EGYPT

ALEXANDRIA

ALEXANDRIA KOM EL-DIKKA: EXCAVATIONS AND PRESERVATION WORK.	
PRELIMINARY REPORT 2008/2009	
<i>Grzegorz Majcherek</i>	27
APPENDIX: AUDITORIUM E: EXPLORATION IN SEASON 2009	
<i>Karol Juchniewicz, Katarzyna Lach</i>	43
KOM EL-DIKKA 2005–2009: SELECTED ANTHROPOLOGICAL RESEARCH	
<i>Robert Mahler</i>	49

MAREA

MAREA. REPORT 2009	
<i>Hanna Szymańska, Krzysztof Babraj</i>	59
MAREA 2009: POTTERY FROM THE EXCAVATIONS	
<i>Anna Drzymuchowska</i>	72

MARINA EL-ALAMEIN

MARINA EL-ALAMEIN. CONSERVATION WORK IN THE 2009 SEASON	
<i>Stanisław Medeksza, Rafał Czerner, Grażyna Bąkowska with contributions by I. Fuks-Rembisz, W. Grzegorek, G. Majcherek, M. Mrozek-Wysocka, P. Zambrzycki</i>	79

CONTENTS

TELL EL-RETABA

TELL EL-RETABA: SEASON 2009

Stawomir Rzepka, Jozef Hudec 107

APPENDIX: TELL EL-RETABA: ARCHAEOBOTANICAL STUDIES

Claire Malleson 118

TELL EL-RETABA 2009: THE POTTERY

Anna Wodzińska 124

TELL EL-FARKHA

TELL EL-FARKHA (GHAZALA). SEASON 2009

Marek Chłodnicki, Krzysztof M. Ciałowicz 135

SAQQARA

SAQQARA 2008–2009

Karol Mysliwiec 157

APPENDIX: CONSERVATION WORK IN SAQQARA (2008–2009)

Zbigniew Godziejewski 167

SAQQARA 2008–2009: THE POTTERY

Teodozja I. Rzeuska 175

NAQLUN

NAQLUN (NEKLONI) EXCAVATIONS IN 2008–2009

Włodzimierz Godlewski 193

APPENDIX: NAQLUN 2008: ARCHAEOBOTANICAL STUDIES

Jarosław Zieliński 210

REFUSE DUMP IN SECTOR B IN NAQLUN: EXCAVATION REPORT 2008–2009

Tomasz Derda, Dorota Dzierzbicka 212

POTTERY FROM THE REFUSE DUMP UNDER UNIT B.26 IN NAQLUN

Katarzyna Danys-Lasek 222

TWO BURIALS FROM CEMETERY A IN NAQLUN: ARCHAEOLOGICAL AND ANTHROPOLOGICAL REMARKS

Dorota Dzierzbicka, Marzena Ożarek 233

ON THE COLLECTION OF WOODEN FINDS FROM NAQLUN AGAIN

Jarosław Zieliński, Iwona Zych 244

DEIR EL-BAHARI

CONSERVATION WORK IN THE HATSHEPSUT TEMPLE IN DEIR EL-BAHARI (2009)

Rajmund Gazda 251

SANDSTONE SPHINXES OF QUEEN HATSHEPSUT FROM DEIR EL-BAHARI:

PRELIMINARY REMARKS

Agata Smilgin 255

CONTENTS

TEMPLE OF TUTHMOSIS III IN DEIR EL-BAHARI IN 2008 AND 2009: WORK IN THE STORES AND FIELD <i>Monika Dolńska</i>	261
THE TEMPLE OF TUTHMOSIS I REDISCOVERED <i>Jadwiga Iwaszczuk</i>	269
DAKHLEH OASIS	
DAKHLEH OASIS PROJECT. PETROGLYPH UNIT: ROCK ART RESEARCH, 2009 <i>Ewa Kuciewicz, Michał Kobusiewicz</i>	279
SUDAN	
OLD DONGOLA	
DONGOLA 2008–2009 <i>Włodzimierz Godlewski</i>	289
APPENDIX: CONSERVATION OF WALL PAINTINGS INSIDE THE FORMER THRONE HALL OF THE MAKURIAN KINGS IN DONGOLA (2009 SEASON) <i>Cristobal Calaforra-Rzepka</i>	312
DONGOLA 2009: POTTERY FROM BUILDING I (KOM A) <i>Katarzyna Danyś-Lasek</i>	315
WALL INSCRIPTIONS IN A BURIAL VAULT UNDER THE NORTHWEST ANNEX OF THE MONASTERY ON KOM H (DONGOLA 2009) <i>Adam Łajtar, Jacques van der Vliet</i>	330
CRYPTS 1 AND 2 IN THE NORTHWEST ANNEX OF THE MONASTERY ON KOM H IN DONGOLA: REPORT ON THE EXPLORATION IN 2009 <i>Włodzimierz Godlewski, Robert Mahler, Barbara Czaja-Szewczak</i>	338
EL-ZUMA	
THE POTTERY FROM FOUR TUMULI GRAVES IN EL-ZUMA (2009) <i>Edyta Klimaszewska-Drabot, Ewa Czyżewska</i>	361
FOURTH CATARACT	
RESEARCH IN THE PCMA UW CONCESSION ON THE FOURTH CATARACT (HAMDAB DAM RESCUE PROJECT). INTERIM REPORT 2009 <i>Marek Chłodziński</i>	377
ROCK ART RESEARCH IN THE FOURTH CATARACT REGION, SEASON 2009 <i>Ewa Kuciewicz, Andrzej Rozwadowski</i>	387
EXCAVATIONS IN 2009 IN THE ENVIRONS OF EL-AR VILLAGE (FOURTH CATARACT REGION, SUDAN) <i>Anna Longa</i>	393
EL-AR 31: EXCAVATIONS OF LATE/POST-MEROITIC TUMULI. PRELIMINARY REPORT <i>Artur Buszek, Michał Kurzyk</i>	399

CYPRUS

NEA PAPHOS

NEA PAPHOS. SEASON 2009

Henryk Meyza in cooperation with Wiktor Andrzej Daszewski, Aleksandra Brzozowska, Joanna Michalska, Joanna K. Rądkowska, and Monika Więch..... 407

LEBANON

JIYEH

PRELIMINARY REPORT ON THE 2008 AND 2009 EXCAVATION SEASONS AT JIYEH (PORPHYREON)

Tomasz Waliszewski, Karol Juchniewicz, Mariusz Gwiazda 423

APPENDIX 1. SUNKEN VESSELS IN LATE ROMAN AND BYZANTINE HOUSES IN AREA D

Mariusz Gwiazda 439

APPENDIX 2. PRELIMINARY REMARKS ON THRESHOLDS FROM PRIVATE HOUSES IN JIYEH (PORPHYREON)

Mariusz Gwiazda 441

LOCAL HELLENISTIC 'PHOENICIAN'-TYPE AMPHORA AND OTHER POTTERY VESSELS FROM EXCAVATIONS IN JIYEH (PORPHYREON) (SEASONS 2008–2009)

Urszula Wicenciak 446

GROUND AND AERIAL PHOTOGRAMMETRIC DOCUMENTATION IN JIYEH (PORPHYREON)

Miron Bogacki 454

SYRIA

PALMYRA

POLISH ARCHAEOLOGICAL MISSION TO PALMYRA. SEASONS 2008 AND 2009

Grzegorz Majcherek 459

HAWARTE

EXCAVATIONS IN HAWARTE 2008–2009

Michał Gawlikowski 481

GLASS FINDS FROM THE MITHRAEUM IN HAWARTE

Krzyszyna Gawlikowska 496

TELL ARBID

TELL ARBID 2008–2009. PRELIMINARY REPORT ON THE RESULTS OF THE THIRTEENTH AND FOURTEENTH SEASONS OF POLISH-SYRIAN EXCAVATIONS

Piotr Bieliński 511

CONTENTS

ADAM MICKIEWICZ UNIVERSITY EXCAVATIONS IN SECTOR P AT TELL ARBID
(SPRING 2009)

Rafał Koliński 537

TELL QARAMEL

TELL QARAMEL: EXCAVATIONS 2009

Ryszard F. Mazurowski 559

PAM STUDIES

ADULT BURIALS OF NINEVITE 5 DATE ON TELL ARBID (2007–2008)

Dariusz Szela 585

CHARIOT TERRACOTTA MODELS FROM TELL ARBID

Mattia Raccidi 605

NEW PROTODYNASTIC *SEREKHS* FROM THE NILE DELTA: THE CASE OF FINDS
FROM TELL EL-FARKHA

Mariusz A. Jucha 625

PITHOS-TYPE VESSELS FROM CHHÎM: PRELIMINARY ASSESSMENT OF FINDS
FROM 1996–2009

Zofia Kowarska, Szymon Lenarczyk 643

BUILDINGS ON SITE B AT NAQLUN (NEKLONI)

Szymon Maślak 653

ZOOARCHAEOLOGICAL ANALYSIS OF MATERIAL FROM CISTERNS STR 1/96–97
AND HA/NEH 2.16.3 IN NEA PAPHOS

Ewelina Tepe 677

ANIMAL BONE REMAINS FROM SHEIKH ABD EL-GURNA:
ISSUES AND OPPORTUNITIES

Urszula Iwaszczuk 691

ANIMALS IN ROCK ART. RESULTS OF ARCHAEOZOOLOGICAL RESEARCH
AT THE SITE OF EL-GAMAMIYA 67 (FOURTH CATARACT, SUDAN)

Marta Osypińska 703

INDEX OF SITES 715

GUIDELINES FOR AUTHORS 716