

Title: **Pithos-type vessels from Chhîm: preliminary assessment of finds from 1996–2009**

Author(s): Zofia Kowarska, Szymon Lenarczyk

Journal: *Polish Archaeology in the Mediterranean* 21 (Research 2009)

Year: 2012

Pages: 643-651

ISSN 1234-5415 (Print), ISSN 2083-537X (Online)

ISBN 978-83-235-1144-1

Publishers: Polish Centre of Mediterranean Archaeology, University of Warsaw (PCMA UW),
Wydawnictwa Uniwersytetu Warszawskiego (WUW)

www.pcma.uw.edu.pl – www.wuw.pl

**PITHOS-TYPE VESSELS FROM CHHÎM:
PRELIMINARY ASSESSMENT OF FINDS FROM 1996–2009**

Zofia Kowarska,¹ Szymon Lenarczyk²

^{1,2} Institute of Archaeology, University of Warsaw

Abstract: *Pithoi* (the typological difference between a *pithos/dolium* and storage container is not clear) were found in abundance (second only to amphorae) in the excavated remains of the Roman–Byzantine village of Chhîm in Lebanon, where their presumed function was the storage of agricultural produce. The article discusses the forms and types of these vessels present in the assemblage, as well as a limited series of decorated examples of *pithoi*, bearing impressed or incised motifs on strips of applied clay or on the body itself. The *pithoi* sherds were dated for the most part contextually by well-known and dated forms of Late Roman C/Phocaeen and African Red Slip wares dating from the end of the 4th to the 7th century AD.

Keywords: Chhîm, *pithos*, Roman–Byzantine, storage vessels, coarse ware

PITHOS-TYPE VESSELS FROM CHHÎM: PRELIMINARY ASSESSMENT OF FINDS FROM 1996–2009^{*}

Zofia Kowarska,¹ Szymon Lenarczyk²

^{1,2}Institute of Archaeology, University of Warsaw

Abstract: *Pithoi* (the typological difference between a *pithos/dolium* and storage container is not clear) were found in abundance (second only to amphorae) in the excavated remains of the Roman–Byzantine village of Chhîm in Lebanon, where their presumed function was the storage of agricultural produce. The article discusses the forms and types of these vessels present in the assemblage, as well as a limited series of decorated examples of *pithoi*, bearing impressed or incised motifs on strips of applied clay or on the body itself. The *pithoi* sherds were dated for the most part contextually by well-known and dated forms of Late Roman C/Phocaeen and African Red Slip wares dating from the end of the 4th to the 7th century AD.

Keywords: Chhîm, *pithos*, Roman–Byzantine, storage vessels, coarse ware

The term *pithos* describes a large storage vessel with thick walls and broad, massive rim.¹ Its main purpose was storage of large volumes of foodstuffs: liquids, such as olive oil, wine, or even water, and dry goods, that is, grain of all kinds, seeds and flour. Owing to their large dimensions *pithoi* were usually a permanent, immobile element of the furnishings of a house or storage room.

Abundant archaeological evidence collected during the excavations conducted by the Polish Centre of Mediterranean Archaeology at Chhîm indicate that the Roman–Byzantine village was a well-established rural centre, in all likelihood active until the 7th–8th century AD

(Waliszewski, Ortali-Tarazi 2002). This impression finds confirmation in the ceramic finds (see Wicenciak 2002).

Among the various vessel types found at Chhîm, *pithoi* constitute the largest functional group after amphorae. Their impressive number can be related most probably to agricultural production and storage of agricultural goods.

Over 1500 vessel fragments corresponding to various forms of *pithoi* were found to date, most of them diagnostic fragments selected in the course of archaeological works. A register of over 400 fragments of *pithoi* has been created, cataloguing various types of rims, bases, handles, and decorated body sherds.²

^{*} An extended version of this report was delivered at the conference *Roman pottery in the Levant: Local production and regional trade. Round Table*, Deutsches Archäologisches Institut, Berlin (19–20 February 2010).

¹ The typological difference between a *pithos/dolium* (definition in Hayes 1997: 35–36) and ‘storage jar’, another term frequently used in the literature, is not clear.

FORMS AND TYPES

Pithoi have a characteristic 'barrel' shape, a large, rounded body and a nearly flat or conical base. Only conical bases were identified as *pithoi* in the material from Chhîm. Other distinctive features of these vessels include absence of a defined neck, a broad, massive rim and thick walls, massive handles, and a body diameter far greater than that of the rim.

Most *pithos* fragments found in Chhîm are small and damaged, the majority being plain body sherds, easily recognized owing to a distinctive fabric and wall thickness. There were a few decorated body sherds. The material included ten or so bases, many rim variants and some fragments with preserved handles. No complete *pithoi* have been excavated on site thus far. However, based on contemporary finds, the height of a Roman and Byzantine vessel is estimated at approximately 0.80 m [Fig. 1].²

The *pithoi* fragments from Chhîm can be divided into at least two groups by rim shape as well as fabric. Type I is characterized by a thick, triangular-sectioned rim and is the most common and the most distinctive type of *pithos* on site. Rim fragments [Fig. 2] and body sherds [Fig. 3:14, 15, 18, 19] of this type have been recognized to date, but no bases or handles. The fabric is very peculiar: it is fine-grained and sandy, color varying from light brown or yellowish-brown to beige. It contains fine (approximately 1 mm in diameter) white, grey, yellow and light grey particles. In fragments with a clearly smoother surface the inclusions are different: grey as well as

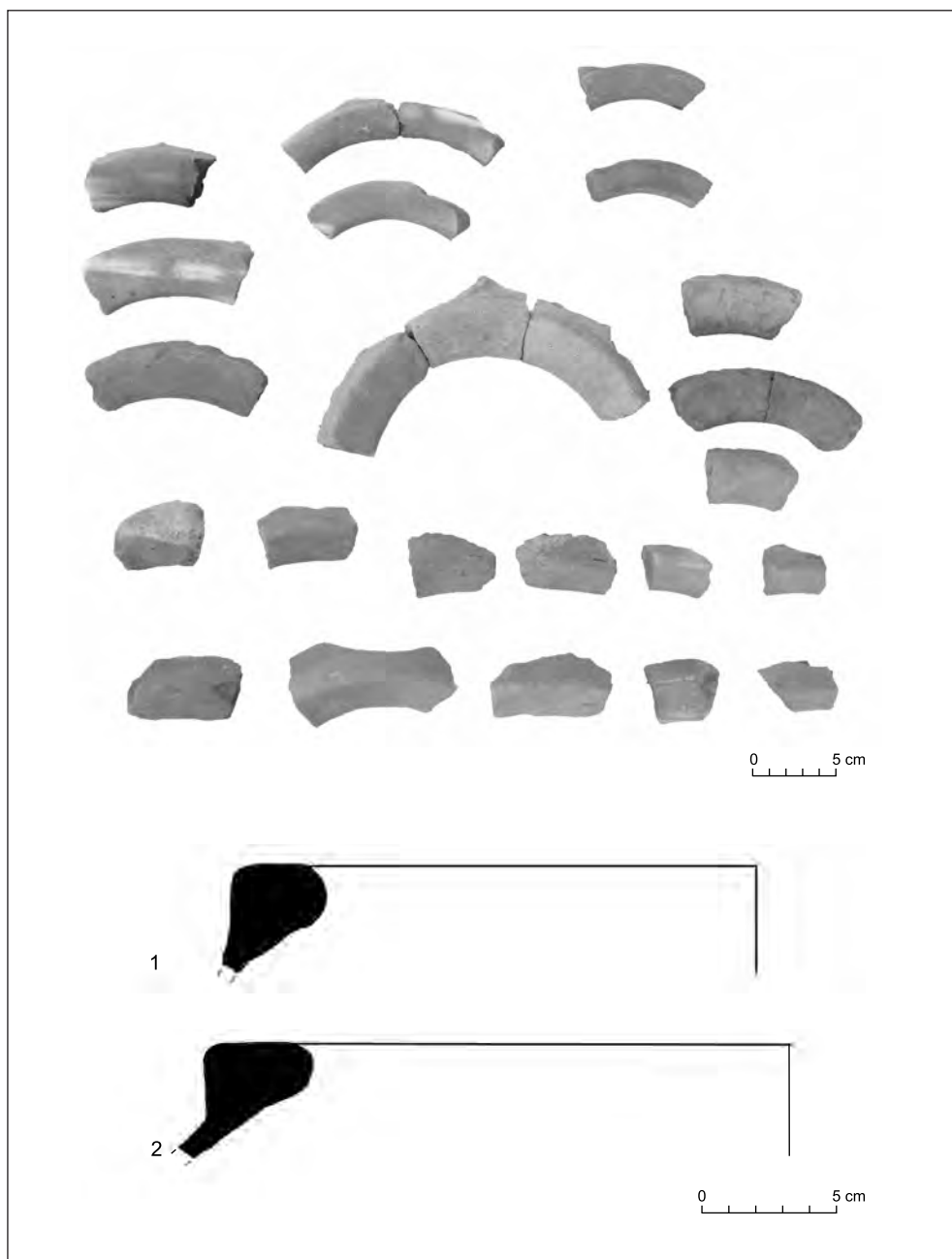
white, light brown and dark grey particles ranging from 1 to 3 mm in diameter.

A large, three-handled specimen of a *pithos* with triangular-sectioned rim was found during recent excavations in Beirut; it was dated to the Byzantine period (Hayes, 'Ala' Eddine 1998–1999: 131, 135 Fig. 7). The Beirut vessel was made from a plain buff/light brown ware. Distinctive wavy



Fig. 1. Modern *pithos*-type vessel from the region (Photo K. Kotlewski)

² Modern counterparts of the *pithos*, observed during a survey of the el Kharroub province conducted by Mahmoud El-Tayeb in 1999, have an average height of 0.70–0.80 m (see El-Tayeb 2002: 10–11).



*Fig. 2. Selection of pithos rims of Type I
(Photos Z. Kowarska, S. Lenarczyk; all drawings by the authors verifying team documentation)*

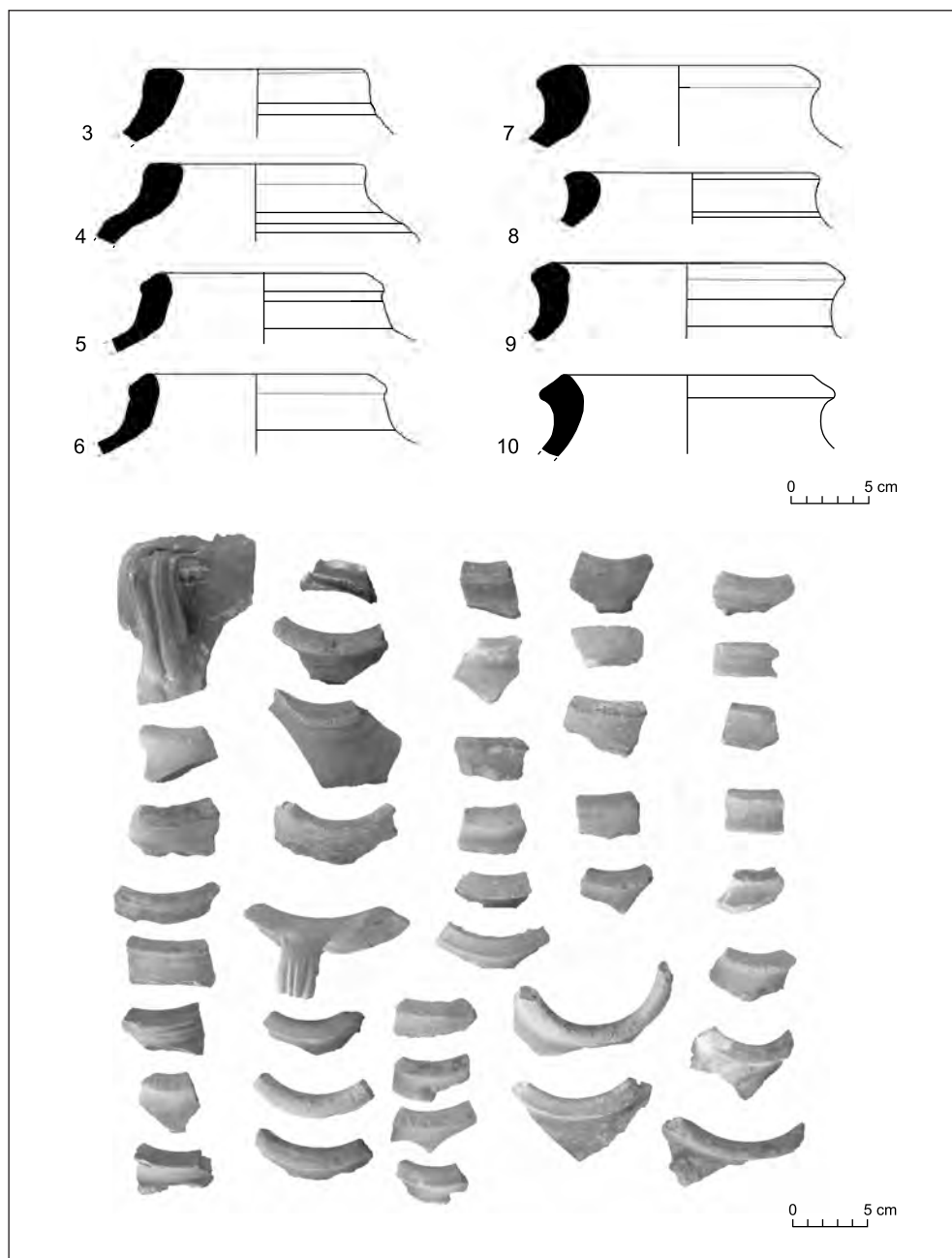


Fig. 3. Selection of pithos rims of type II
(Photos and drawings Z. Kowarska, S. Lenarczyk)

combed decoration adorns the shoulders and the broad handles feature two thin grooves. Several analogous *pithos* rim shapes were also recorded during excavations conducted at the coastal site of Jiyeh (Porphyreon) (unfortunately from poorly dated surface layers, U. Wicenciak, personal communication). Some examples of a similar

kind of *pithos*, characterized by a thick, triangular-sectioned rim and combed decoration, dated to the Late Roman period, were found also at the site of Panayia Ematausa in Cyprus (Winther Jacobsen 2005: 625–626, 632–633, Figs 5, 6). Three *pithoi* with similar, triangular-sectioned rims were uncovered during excavations conducted in

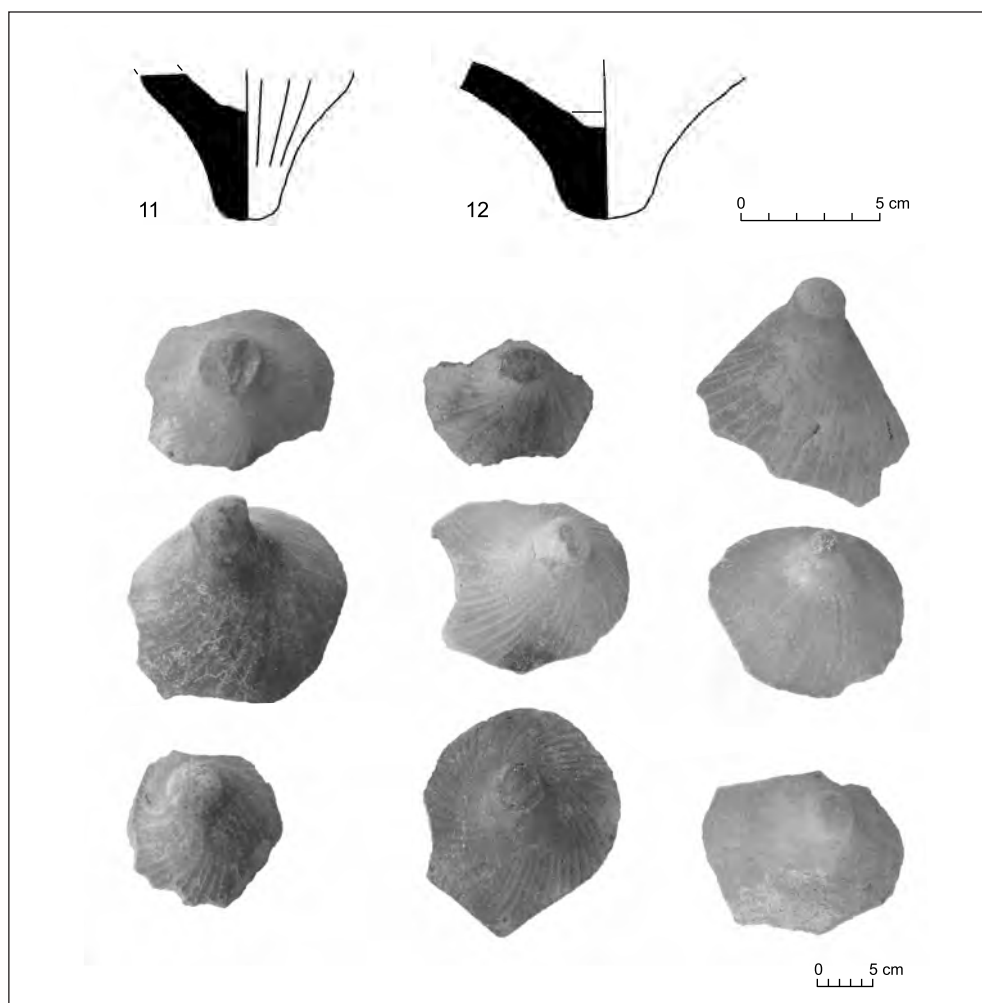


Fig. 4. Selection of *pithos* bases with spirally grooved decoration

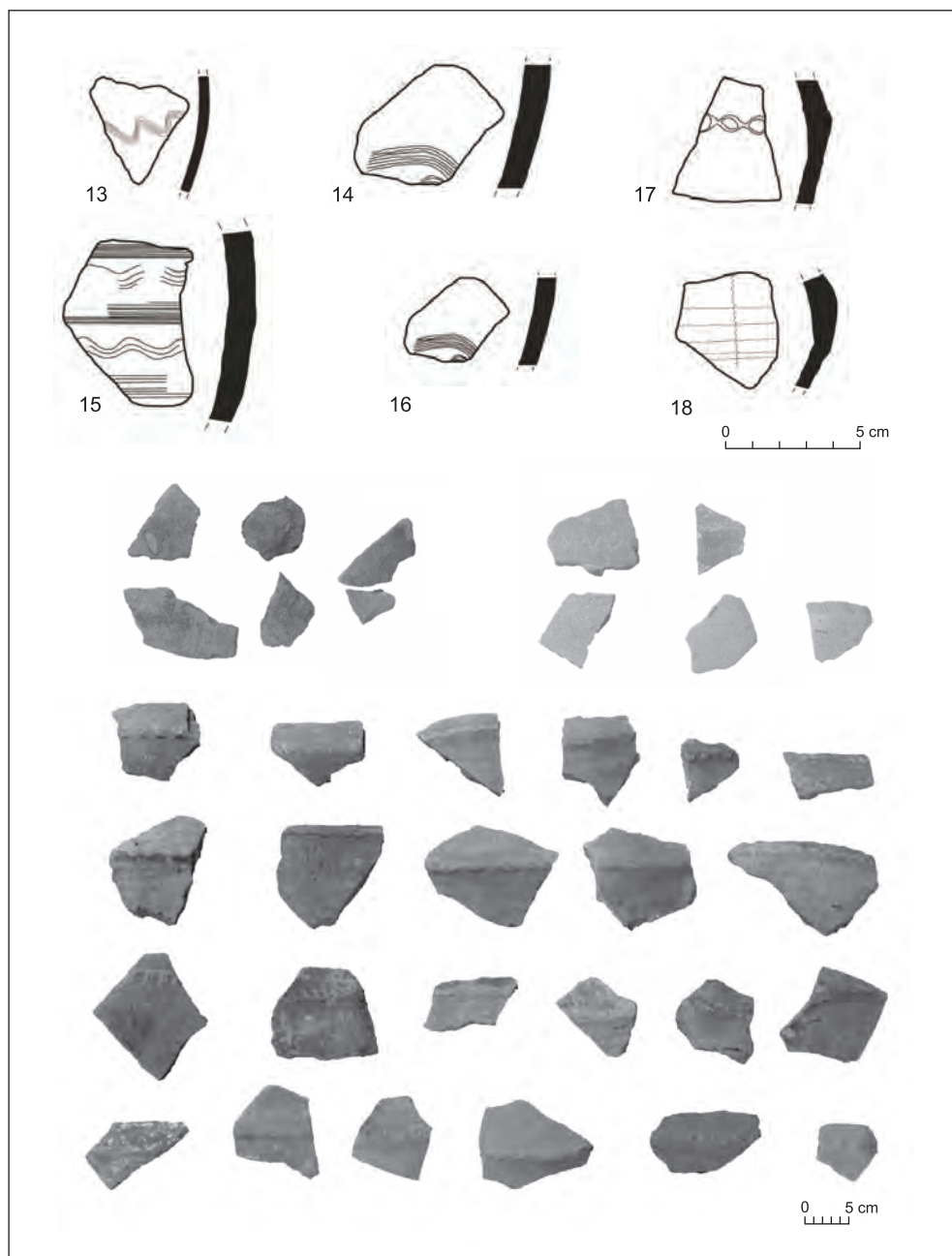


Fig. 5. Selection of decorated fragments

Upper Galilee at the site of Tell Keisan (see Florimont 1984: 29–30). A reconstruction of the shape was possible thanks to one of the vessels, which was found almost complete. It also permitted the base and handles of the vessels from Chhîm to be reconstructed (the vessel from Tell Keisan had a flat base). Also the decoration of the vessels at Tell Keisan, combed wavy lines in the upper part of the body, is very similar to the body decoration of the *pithos* fragments from Chhîm [Fig. 5:13–16].

Other parallels of Byzantine date were recorded during an archaeological survey of sites in Upper Galilee (Horvat Ovesh, Horvat Gov and Horvat Karkara), where they were dated to the 6th century AD, and on coastal sites among ceramic material dated to the Byzantine and Early Islamic periods (Frankel *et alii* 2001: 68, Fig. 3.11:13).

The second *pithos* type in the material from the site is characterized by a thick rim, which can be either everted (at various angles) [Fig. 3:3,4,5,6] or slightly inverted [Fig. 3:7,8,9,10]. This rim shape resembles rims referred to as “storage jars” in the topic literature (see Wicenciak 2002: 71–73; Pieri 2001 [2002]: 117–119, Figs 9–10). The bases attributed to this *pithos* type are shaped like a truncated cone. This specific shape probably made it easier to stand the vessel upright, in specially dug pits in the floor. Some of the bases found at Chhîm are characterized by spirally grooved decoration [Fig. 4].

Pithoi of this type are characterized by a pinkish-beige fabric referred to as *Chhîm pinkish*. The fabric is considered to be of local origin, but this hypothesis has not been confirmed by chemical analyses (see Wicenciak 2002: 62).

Many rim variants resemble type two, some only slightly everted or nearly vertical, others incurved. Therefore, the division into two types or rather groups is preliminary. Some of the rim variants may represent *pithoi* in use during earlier periods.

DECORATION

Decorated *pithos* body sherds constituted a relatively small group of 45 fragments in an assemblage totaling presently about 1500 fragments. Decoration usually covered the shoulders at the point where they meet the body. Typical ornaments included rope impressions, short incised diagonal lines, finger impressions or incised wavy lines, the motifs occurring on applied strips of clay (see Pieri 2001 [2002]: Pl. 9) [Fig. 5]. They were typical of *pithoi* of Type II. A comparable type of decoration is found on storage vessels from the Early Bronze Age in the region (Frankel *et alii* 2001: 53–54, Figs 3.4:2, 15).

In several cases the decoration also appears directly on the vessel body. Several fragments feature distinctive geometric ornaments composed of irregular quadrangles linked with lines and filled with dots, as well as straight and wavy lines (Wicenciak 2002: 71, Pl. 9:1254).

CONCLUSIONS

Not many of the *pithos* fragments found during excavations in Chhîm come from securely dated archaeological contexts. Most of them were accumulated in topsoil

or room fill. Nonetheless, well-known and dated forms of Late Roman C/Phocaean and African Red Slip wares dating from the end of the 4th to the 7th century AD are

the best source of accurate dating for *pithoi* found in Chhîm (see Domžalski 2002: 77–88). Parallels from the region, originating from Upper Galilee and Northern Lebanon, also point strongly to the 4th–7th century AD. It merits note that the shape of rims and handles, and decorative patterns did not change significantly from the Early Bronze Age to the Roman and Byzantine periods. Owing to the size of the vessels — and probably also their price — the same *pithoi* would have been in use for decades. Due to the longevity

and durability of the fabric used in their production, *pithos* fragments could also be reused. This could prove to be a serious obstacle in a precise dating of the different types of this kind of vessels (Christakis 1999: 5).

ACKNOWLEDGMENTS

The authors would like to kindly thank Urszula Wicenciak, the pottery specialist of the Jiyeh team, for her assistance in preparing the documentation of this assemblage.

Zofia Kowarska

Institute of Archaeology, University of Warsaw
00-497 Warsaw, Poland
ul. Krakowskie Przedmieście 26/28
zofiakowarska@wp.pl

Szymon Lenarczyk

Institute of Archaeology, University of Warsaw
00-497 Warsaw, Poland
ul. Krakowskie Przedmieście 26/28
szymonlenarczyk@wp.pl

REFERENCES

- Christakis, K.S.
1999 Pithoi and food storage in Neopalatial Crete: A domestic perspective, *World Archaeology* 31/1, 1–20
- Domžalski, K.
2002 Preliminary information on terra sigillata and red slip wares from Chhîm [in:] T. Waliszewski, R. Ortali-Tarazi, *Village romain et byzantin à Chhîm-Marjiyat. Rapport préliminaire (1996–2002)*, 77–88
- El-Tayeb, M.
2002 Archaeological reconnaissance in Iqlîm el Kharoub. Preliminary report [in:] T. Waliszewski, R. Ortali-Tarazi, *Village romain et byzantin à Chhîm-Marjiyat. Rapport préliminaire (1996–2002)*, 10–11
- Florimont, C.
1984 *Matériel céramique d'une fosse byzantine à Tell Keisân*, paper presented at the Académie des inscriptions et belles-lettres, Jérusalem, École biblique et archéologique française

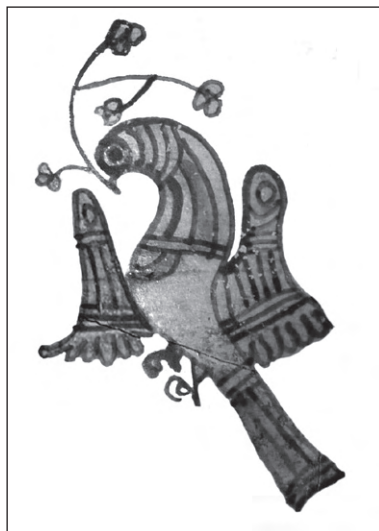
- Frankel, R., Getzov, N., Aviam, M., Degani, A.
2001 *Settlement Dynamics and Regional Diversity in Ancient Upper Galilee. Archaeological Survey of Upper Galilee* [=Israel Antiquities Authority Reports 14], Jerusalem: Israel Antiquities Authority
- Hayes, J.W.
1997 *Handbook of Mediterranean Roman Pottery*, London: British Museum Press
- Hayes, J.W., 'Ala' Eddine, A.
1998–1999 BEY 004. A transitional Byzantine–Umayyad pottery group, *BAAL* 3, 127–136
- Pieri, D.
2001 [2002] (with the collaboration of M.-O. Rousset) Yanouh et la haute vallée du Nahr Ibrahim: la céramique [in:] P.-L. Gatier *et alii*, Mission de Yanouh et de la haute vallée du Nahr Ibrahim. Rapport préliminaire (1999–2001), *BAAL* 5, 114–131
2002 [2004] Céramique et chronologie: sondages de 2002 [in:] P.-L. Gatier *et alii*, Mission de Yanouh et de la haute vallée du Nahr Ibrahim. Rapport préliminaire 2002, *BAAL* 6, 237–249
- Waliszewski, T., Ortali-Tarazi, R.
2002 Village romain et byzantin à Chhîm-Marjiyat. Rapport préliminaire (1996–2002), *BAAL* 6, 5–105
- Wicenciak, U.
2002 Preliminary information on the local pottery from Chhîm [in:] T. Waliszewski, R. Ortali-Tarazi *Village romain et byzantin à Chhîm-Marjiyat. Rapport préliminaire (1996–2002)*, 62–76
- Winther Jacobsen, K.
2005 Late Roman Coarse Wares and transport amphorae from Panayia Ematousa, Cyprus [in:] J.M. Gurt Esparraguera, J. Buxeda i Garrigós, M.A. Cau Ontiveros (eds), *LRCW 1. Late Roman Coarse Wares, Cooking Wares and Amphorae in the Mediterranean. Archaeology and Archaeometry* [=BAR International Series 1340], Oxford: Archaeopress, 625–634

POLISH CENTRE OF MEDITERRANEAN ARCHAEOLOGY
UNIVERSITY OF WARSAW

POLISH ARCHAEOLOGY IN THE MEDITERRANEAN

XXI

RESEARCH 2009



CONTENTS

CONTENTS

ACKNOWLEDGMENTS	11
OBITUARIES	
<i>Aleksandra Krzyżanowska</i>	13
ABBREVIATIONS AND STANDARD REFERENCES	15

PAM REPORTS

PCMA FIELD MISSIONS AND PROJECTS IN 2009 (WITH MAP)	19
---	----

EGYPT

ALEXANDRIA

ALEXANDRIA KOM EL-DIKKA: EXCAVATIONS AND PRESERVATION WORK.	
PRELIMINARY REPORT 2008/2009	
<i>Grzegorz Majcherek</i>	27
APPENDIX: AUDITORIUM E: EXPLORATION IN SEASON 2009	
<i>Karol Juchniewicz, Katarzyna Lach</i>	43
KOM EL-DIKKA 2005–2009: SELECTED ANTHROPOLOGICAL RESEARCH	
<i>Robert Mahler</i>	49

MAREA

MAREA. REPORT 2009	
<i>Hanna Szymańska, Krzysztof Babraj</i>	59
MAREA 2009: POTTERY FROM THE EXCAVATIONS	
<i>Anna Drzymuchowska</i>	72

MARINA EL-ALAMEIN

MARINA EL-ALAMEIN. CONSERVATION WORK IN THE 2009 SEASON	
<i>Stanisław Medeksza, Rafał Czerner, Grażyna Bąkowska with contributions by I. Fuks-Rembisz, W. Grzegorek, G. Majcherek, M. Mrozek-Wysocka, P. Zambrzycki</i>	79

CONTENTS

TELL EL-RETABA

TELL EL-RETABA: SEASON 2009

Stawomir Rzepka, Jozef Hudec 107

APPENDIX: TELL EL-RETABA: ARCHAEOBOTANICAL STUDIES

Claire Malleson 118

TELL EL-RETABA 2009: THE POTTERY

Anna Wodzińska 124

TELL EL-FARKHA

TELL EL-FARKHA (GHAZALA). SEASON 2009

Marek Chłodnicki, Krzysztof M. Ciałowicz 135

SAQQARA

SAQQARA 2008–2009

Karol Mysliwiec 157

APPENDIX: CONSERVATION WORK IN SAQQARA (2008–2009)

Zbigniew Godziejewski 167

SAQQARA 2008–2009: THE POTTERY

Teodozja I. Rzeuska 175

NAQLUN

NAQLUN (NEKLONI) EXCAVATIONS IN 2008–2009

Włodzimierz Godlewski 193

APPENDIX: NAQLUN 2008: ARCHAEOBOTANICAL STUDIES

Jarosław Zieliński 210

REFUSE DUMP IN SECTOR B IN NAQLUN: EXCAVATION REPORT 2008–2009

Tomasz Derda, Dorota Dzierzbicka 212

POTTERY FROM THE REFUSE DUMP UNDER UNIT B.26 IN NAQLUN

Katarzyna Danys-Lasek 222

TWO BURIALS FROM CEMETERY A IN NAQLUN: ARCHAEOLOGICAL AND ANTHROPOLOGICAL REMARKS

Dorota Dzierzbicka, Marzena Ożarek 233

ON THE COLLECTION OF WOODEN FINDS FROM NAQLUN AGAIN

Jarosław Zieliński, Iwona Zych 244

DEIR EL-BAHARI

CONSERVATION WORK IN THE HATSHEPSUT TEMPLE IN DEIR EL-BAHARI (2009)

Rajmund Gazda 251

SANDSTONE SPHINXES OF QUEEN HATSHEPSUT FROM DEIR EL-BAHARI: PRELIMINARY REMARKS

Agata Smilgin 255

CONTENTS

TEMPLE OF TUTHMOSIS III IN DEIR EL-BAHARI IN 2008 AND 2009: WORK IN THE STORES AND FIELD <i>Monika Dolńska</i>	261
THE TEMPLE OF TUTHMOSIS I REDISCOVERED <i>Jadwiga Iwaszczuk</i>	269
DAKHLEH OASIS	
DAKHLEH OASIS PROJECT. PETROGLYPH UNIT: ROCK ART RESEARCH, 2009 <i>Ewa Kuciewicz, Michał Kobusiewicz</i>	279
SUDAN	
OLD DONGOLA	
DONGOLA 2008–2009 <i>Włodzimierz Godlewski</i>	289
APPENDIX: CONSERVATION OF WALL PAINTINGS INSIDE THE FORMER THRONE HALL OF THE MAKURIAN KINGS IN DONGOLA (2009 SEASON) <i>Cristobal Calaforra-Rzepka</i>	312
DONGOLA 2009: POTTERY FROM BUILDING I (KOM A) <i>Katarzyna Danyś-Lasek</i>	315
WALL INSCRIPTIONS IN A BURIAL VAULT UNDER THE NORTHWEST ANNEX OF THE MONASTERY ON KOM H (DONGOLA 2009) <i>Adam Łajtar, Jacques van der Vliet</i>	330
CRYPTS 1 AND 2 IN THE NORTHWEST ANNEX OF THE MONASTERY ON KOM H IN DONGOLA: REPORT ON THE EXPLORATION IN 2009 <i>Włodzimierz Godlewski, Robert Mahler, Barbara Czaja-Szewczak</i>	338
EL-ZUMA	
THE POTTERY FROM FOUR TUMULI GRAVES IN EL-ZUMA (2009) <i>Edyta Klimaszewska-Drabot, Ewa Czyżewska</i>	361
FOURTH CATARACT	
RESEARCH IN THE PCMA UW CONCESSION ON THE FOURTH CATARACT (HAMDAB DAM RESCUE PROJECT). INTERIM REPORT 2009 <i>Marek Chłodziński</i>	377
ROCK ART RESEARCH IN THE FOURTH CATARACT REGION, SEASON 2009 <i>Ewa Kuciewicz, Andrzej Rozwadowski</i>	387
EXCAVATIONS IN 2009 IN THE ENVIRONS OF EL-AR VILLAGE (FOURTH CATARACT REGION, SUDAN) <i>Anna Longa</i>	393
EL-AR 31: EXCAVATIONS OF LATE/POST-MEROITIC TUMULI. PRELIMINARY REPORT <i>Artur Buszek, Michał Kurzyk</i>	399

CYPRUS

NEA PAPHOS

NEA PAPHOS. SEASON 2009

Henryk Meyza in cooperation with Wiktor Andrzej Daszewski, Aleksandra Brzozowska, Joanna Michalska, Joanna K. Rądkowska, and Monika Więch..... 407

LEBANON

JIYEH

PRELIMINARY REPORT ON THE 2008 AND 2009 EXCAVATION SEASONS AT JIYEH (PORPHYREON)

Tomasz Waliszewski, Karol Juchniewicz, Mariusz Gwiazda 423

APPENDIX 1. SUNKEN VESSELS IN LATE ROMAN AND BYZANTINE HOUSES IN AREA D

Mariusz Gwiazda 439

APPENDIX 2. PRELIMINARY REMARKS ON THRESHOLDS FROM PRIVATE HOUSES IN JIYEH (PORPHYREON)

Mariusz Gwiazda 441

LOCAL HELLENISTIC 'PHOENICIAN'-TYPE AMPHORA AND OTHER POTTERY VESSELS FROM EXCAVATIONS IN JIYEH (PORPHYREON) (SEASONS 2008–2009)

Urszula Wicenciak 446

GROUND AND AERIAL PHOTOGRAMMETRIC DOCUMENTATION IN JIYEH (PORPHYREON)

Miron Bogacki 454

SYRIA

PALMYRA

POLISH ARCHAEOLOGICAL MISSION TO PALMYRA. SEASONS 2008 AND 2009

Grzegorz Majcherek 459

HAWARTE

EXCAVATIONS IN HAWARTE 2008–2009

Michał Gawlikowski 481

GLASS FINDS FROM THE MITHRAEUM IN HAWARTE

Krystyna Gawlikowska 496

TELL ARBID

TELL ARBID 2008–2009. PRELIMINARY REPORT ON THE RESULTS OF THE THIRTEENTH AND FOURTEENTH SEASONS OF POLISH-SYRIAN EXCAVATIONS

Piotr Bieliński 511

CONTENTS

ADAM MICKIEWICZ UNIVERSITY EXCAVATIONS IN SECTOR P AT TELL ARBID
(SPRING 2009)

Rafał Koliński 537

TELL QARAMEL

TELL QARAMEL: EXCAVATIONS 2009

Ryszard F. Mazurowski 559

PAM STUDIES

ADULT BURIALS OF NINEVITE 5 DATE ON TELL ARBID (2007–2008)

Dariusz Szela 585

CHARIOT TERRACOTTA MODELS FROM TELL ARBID

Mattia Raccidi 605

NEW PROTODYNASTIC *SEREKHS* FROM THE NILE DELTA: THE CASE OF FINDS
FROM TELL EL-FARKHA

Mariusz A. Jucha 625

PITHOS-TYPE VESSELS FROM CHHÎM: PRELIMINARY ASSESSMENT OF FINDS
FROM 1996–2009

Zofia Kowarska, Szymon Lenarczyk 643

BUILDINGS ON SITE B AT NAQLUN (NEKLONI)

Szymon Maślak 653

ZOOARCHAEOLOGICAL ANALYSIS OF MATERIAL FROM CISTERNS STR 1/96–97
AND HA/NEH 2.16.3 IN NEA PAPHOS

Ewelina Tepe 677

ANIMAL BONE REMAINS FROM SHEIKH ABD EL-GURNA:
ISSUES AND OPPORTUNITIES

Urszula Iwaszczuk 691

ANIMALS IN ROCK ART. RESULTS OF ARCHAEOZOOLOGICAL RESEARCH
AT THE SITE OF EL-GAMAMIYA 67 (FOURTH CATARACT, SUDAN)

Marta Osypińska 703

INDEX OF SITES 715

GUIDELINES FOR AUTHORS 716