



UNIVERSITY
OF WARSAW | Polish Centre of
Mediterranean Archaeology



Title: Faunal remains from the fortified settlement around the church at Banganarti in Sudan.

Author(s) : **Marta Osypińska**

Journal: *Polish Archaeology in the Mediterranean* 24/1 (Research)

Year: 2015

Pages: 411 - 424

ISSN 1234–5415 (Print), ISSN 2083–537X (Online)

Publisher: Polish Centre of Mediterranean Archaeology, University of Warsaw (PCMA UW),
Wydawnictwa Uniwersytetu Warszawskiego (WUW)

www.pcma.uw.edu.pl www.wuw.edu.pl

Abstract: The assemblage of faunal remains from Banganarti subjected to archaeozoological examination counted 4178 bones and fragments of bones. They represented contexts recorded within the fortified settlement around the church in Banganarti, attributed to two different chronological phases: 7th–10th century AD (Early Makuria) and 11th–12th century AD (Classic Makuria). Species identified among the 1066 osteological remains from the first phase included mammals, fishes and mollusks. Domestic ruminants dominated this group: sheep/goat (42.77%) and cattle (41.08%); pig was also frequently recorded (12.38%). Bones from the second phase (1513 identified remains) were identified most frequently as cattle (43.75%), sheep/goat (32.78%) and pig (19.69%). Trace remains of donkey, dromedary, dog and bush pig were observed. The analysis gave rise to the first ever characteristic of breeding and meat consumption models for a settlement in the Kingdom of Makuria, outside the capital located at Old Dongola. Beef and pork proved to have a growing importance in consumption patterns in Banganarti over the ages. A study of animal morphology allowed breeds to be established.

Keywords: archaeozoology, Sudan, Makuria, African livestock, history of Nubia, economy, animals, meat consumption, animal breeding, African cattle, Christian kingdoms in Nubia

البقايا الحيوانية من المستوطنة المحصنة حول الكنيسة في بنقنارتي - السودان .

Marta Osypińska

الملخص: العديد من البقايا الحيوانية من بنقنارتي خضعت لفحص *archaeo zoologica* أحصت عدد 4178 من العظام و شظايا العظام والتي تمثل الحالات المسجلة في مستوطنة الحصن حول الكنيسة في بنقنارتي تنسب إلى مرحلتين زمنيتين مختلفتين (القرن السابع - القرن العاشر) الميلادي (حقبة مقرة المبكرة) و القرن (الثاني عشر) (حقبة مقرة الكلاسيكية) . الأنواع التي تم تحديدها ضمن بقايا الهياكل العظمية من المرحلة الأولى تتضمن الثدييات والأسماك والرخويات وسيطرت الحيوانات المجترة على المجموعة :أغنام / وماعز (42.77 %) والمواشي (41.08 %) أما الخنازير سجلت (12.38 %) , والعظام من المرحلة الثانية (1513)البقايا كانت قد حددت الماشية (43.75 %) وأغنام/ وماعز (32.78 %) والخنازير (19.69 %) ولوحظ أثر بقايا لحمار، جمل عربي، كلب و أجمة خنازير . لقد أعطى التحليل دليل على أول صفة مميزة لتربية وإستهلاك اللحوم لمستوطنة في مملكة مقرة خارج العاصمة في دنقلا العجوز. لحم البقر ولحم الخنزير ثبت أن لهما أهمية متزايدة في أنماط الإستهلاك في بنقنارتي عبر العصور. إن دراسة تطور التشكيل الحيواني قد ساعد على نشأة السلالات .

POLISH ARCHAEOLOGY IN THE MEDITERRANEAN (PAM)
Annual of the Polish Centre of Mediterranean Archaeology, University of Warsaw

Editorial Board

Piotr Bieliński
Krzysztof M. Ciałowicz
Wiktor Andrzej Daszewski
Michał Gawlikowski
Włodzimierz Godlewski
Karol Myśliwiec
Tomasz Waliszewski

International Advisory Board

Jean Charles Balty
Charles Bonnet
Giorgio Buccellati
Stan Hendrickx
Johanna Hlaubek

Peer-reviewed by members of the *PAM* committee of independent reviewers.
<http://www.pcma.uw.edu.pl/en/pam-journal/pam-independent-reviewers/>

POLISH CENTRE OF MEDITERRANEAN ARCHAEOLOGY
UNIVERSITY OF WARSAW

POLISH ARCHAEOLOGY IN THE MEDITERRANEAN

XXIV/1

RESEARCH



ABBREVIATIONS

<i>AA</i>	<i>Archäologischer Anzeiger; Jahrbuch des Deutschen Archäologischen Instituts</i> (Berlin)
<i>ANM</i>	<i>Archéologie du Nil Moyen</i> (Lille)
<i>ASAE</i>	<i>Annales du Service des Antiquités de l'Égypte</i> (Cairo)
<i>AV</i>	<i>Archäologische Veröffentlichungen, Deutsches Archäologisches Institut, Abteilung Kairo</i> (Berlin–Mainz am Rhein)
<i>BAAL</i>	<i>Bulletin d'archéologie et d'architecture libanaises</i> (Beirut)
<i>BAH</i>	<i>Bibliothèque archéologique et historique</i> (Paris)
<i>BAR IS</i>	<i>British Archaeology Reports International Series</i> (Oxford)
<i>BASOR</i>	<i>Bulletin of the American Schools of Oriental Research</i> (Ann Arbor, MI)
<i>BCH</i>	<i>Bulletin de correspondance hellénique</i> (Paris)
<i>BdE</i>	<i>Bibliothèque d'étude</i> (Cairo)
<i>BIFAO</i>	<i>Bulletin de l'Institut français d'archéologie orientale</i> (Cairo)
<i>BSAA</i>	<i>Bulletin de la Société d'archéologie d'Alexandrie</i> (Cairo)
<i>BSFE</i>	<i>Bulletin de la Société française d'égyptologie</i> (Paris)
<i>CCE</i>	<i>Cahiers de la céramique égyptienne</i> (Cairo)
<i>EtTrav</i>	<i>Études et travaux. Travaux du Centre d'archéologie méditerranéenne de l'Académie des sciences polonaise</i> (Warsaw)
<i>FIFAO</i>	<i>Fouilles de l'Institut français d'archéologie orientale</i> (Cairo)
<i>GAMAR</i>	<i>Gdańsk Archaeological Museum African Reports</i> (Gdańsk)
<i>GM</i>	<i>Göttinger Miszellen</i> (Göttingen)
<i>IAMS</i>	<i>Institute of Archaeo-Metallurgical Studies</i> (London)
<i>JARCE</i>	<i>Journal of the American Research Center in Egypt</i> (Boston–Princeton–New York–Cairo)
<i>JEA</i>	<i>Journal of Egyptian Archaeology</i> (London)
<i>JGS</i>	<i>Journal of Glass Studies</i> (Corning, NY)
<i>JJP</i>	<i>Journal of Juristic Papyrology</i> (Warsaw)
<i>JRS</i>	<i>Journal of Roman Studies</i> (London)
<i>MDAIK</i>	<i>Mitteilungen des Deutschen Archäologischen Instituts, Abteilung Kairo</i> (Wiesbaden)
<i>OIP</i>	<i>Oriental Institute Publications</i> (Chicago)
<i>OLA</i>	<i>Orientalia lovaniensia analecta</i> (Louvain)
<i>PAM</i>	<i>Polish Archaeology in the Mediterranean</i> (Warsaw)
<i>PSAS</i>	<i>Proceedings of the Seminar for Arabian Studies</i> (London)
<i>SAAC</i>	<i>Studies in Ancient Art and Civilisation</i> (Kraków)
<i>SAK</i>	<i>Studien zur altägyptischen Kultur</i> (Hamburg)
<i>SAOC</i>	<i>Studies in Ancient Oriental Civilization</i> (Chicago)
<i>WVDOG</i>	<i>Wissenschaftliche Veröffentlichungen der deutschen Orient-Gesellschaft</i> (Berlin–Leipzig)

FAUNAL REMAINS FROM THE FORTIFIED SETTLEMENT AROUND THE CHURCH AT BANGANARTI IN SUDAN

Marta Osypińska

Institute of Archaeology and Ethnology, Polish Academy of Sciences, Poznań

Abstract: The assemblage of faunal remains from Banganarti subjected to archaeozoological examination counted 4178 bones and fragments of bones. They represented contexts recorded within the fortified settlement around the church in Banganarti, attributed to two different chronological phases: 7th–10th century AD (Early Makuria) and 11th–12th century AD (Classic Makuria). Species identified among the 1066 osteological remains from the first phase included mammals, fishes and mollusks. Domestic ruminants dominated this group: sheep/goat (42.77%) and cattle (41.08%); pig was also frequently recorded (12.38%). Bones from the second phase (1513 identified remains) were identified most frequently as cattle (43.75%), sheep/goat (32.78%) and pig (19.69%). Trace remains of donkey, dromedary, dog and bush pig were observed. The analysis gave rise to the first ever characteristic of breeding and meat consumption models for a settlement in the Kingdom of Makuria, outside the capital located at Old Dongola. Beef and pork proved to have a growing importance in consumption patterns in Banganarti over the ages. A study of animal morphology allowed breeds to be established.

Keywords: archaeozoology, Sudan, Makuria, African livestock, history of Nubia, economy, animals, meat consumption, animal breeding, African cattle, Christian kingdoms in Nubia

Archaeological fieldwork in Banganarti in the first seasons was concentrated on the ruins of a church (Raphaelion) in the central part of the enclosure (Żurawski 2012; 2014). The excavation yielded animal bones as well as iconographical sources for archaeozoological analysis, but for obvious reasons the remains coming from the religious complex were not numerous. Neither could they reflect typical meat consumption patterns characterizing the inhabitants in successive phases.

In 2007, digging started in other parts of the enclosure, the fortifications and areas by the walls, inside and outside. The architecture proved to be mainly dwellings, domestic installations and refuse dumps. Numerous well-preserved assemblages of faunal osteological material from this fieldwork constituted an excellent source for studies on the importance of the animal economy.

The faunal remains (altogether 4178) from excavations in 2007–2012

were studied in 2012. They came from archaeological contexts along the defense walls in the northern, western and southern parts of the fortifications, the eastern tower and the extensive quarter of houses in the southwestern part of the settlement. The osteological material was attributed to two general chronological phases: Early Makuria (6th–7th century AD) and Classic Makuria (11th–12th century AD).

MATERIAL

The state of preservation of the faunal remains collected by hand is good overall [Fig. 1] (61.49 % of the remains were identified to species) [Table 1]. Butchering

and cooking had the greatest impact on the condition of the remains (heavy fragmentation of meat and bones), both representing biostratinomic processes in a taphonomic approach. Post-depositional factors affected the state of preservation of the bones to a lesser degree; extremely arid

Table 1. *Identification of the studied animal remains from the Banganarti settlement*

Bones	n	%
Identified	2579	61.5
Unidentified	1615	38.5
N	4194	100



Fig. 1. *State of preservation of osteological material from Banganarti*
(Photo M. Osypińska)

conditions and high alkalinity occasionally made the less compact bones brittle.

METHOD

Chronological and topographical divisions were applied to the material. Zoological and anatomical identification were the first stage of the analytical process. Macroscopic features on the bones were examined to establish age at death (Kolda 1936; Chaplin 1971; Lutnicki 1972; Müller 1973), sex (Calkin 1960; Sykes and Symmons 2007), osteometrics and taphonomy. Pathological changes on the bones were also observed. Species distribution was analyzed separately for two chronological phases; percentages were calculated for all identified remains within given groups. Frequency and percentage share of bones of animals exclusively with the highest economic potential were calculated as well. The anatomical distribution of the remains was analyzed for the most frequently represented species,

also by chronological phases. Remains of species with the greatest economic value were examined also by technological carcass division corresponding to particular categories:

- head (H) (bones of cranium, corneal process, maxilla, teeth and mandible),
- torso (T) (vertebrae, sacrum, sternum and ribs),
- proximal part of anterior limb (PPAL) (scapula, humerus, radius, ulna),
- distal part of anterior limb (DPAL) (carpal bones, metacarpals I–V),
- proximal part of pelvic limb (PPPL) (pelvis, femur, patella, tibia, fibula),
- distal part of pelvic limb (DPPL) (calcaneus, talus, metatarsi),
- digits (D) (phalanges I, II, III).

Von den Driesch (1976) unified the results for all domestic species. Metric data for cattle bones were plotted on point scales (Lasota-Moskalewska 2005) in order to characterize trends in the cattle population morphotype in Banganarti.

RESULTS

PHASE 1: EARLY MAKURIA

The identified osteological remains from the Early Makuria phase of the settlement in Banganarti [Table 3] were dominated by mammals (*Mammalia*), with a few fish (*Pisces*) and bivalve mollusk shells (*Bivalvia*). Bones of domestic animals, especially ruminants (*Ruminantia*), prevailed in this assemblage. The frequency and percentage share of cattle and combined sheep/goat remains was very similar: respectively 42.77% and 41.08%. Pig was the next relatively numerous species in the assemblage (12.38%). The remaining animals were represented by much smaller groups. Skeleton elements of a dromedary

were identified (3.18%) and single bones of donkey, dog and the only wild species in the group, that is, Dorkas gazelle. Two fish remains belonged to African sharp-tooth catfish (*Calrias gariepinus*), while a mollusk shell was identified as *Etheria nilotica*.

Cattle (44.44%), sheep/goat (42.69%) and pig (12.86%) were species of the greatest economic importance [Table 2].

Cattle was represented in the assemblage by all elements of the skeleton. Patellas and phalanges II and III were missing in the small ruminants group. Even more elements and the phalanges in particular were missing from the pig bones group.

Anatomical distribution of the cattle skeleton [Table 4] considered in categories of division of the carcass demonstrated the predominance of elements of the

Table 2. Percentage of remains of the most important economic species

Species	Early Makuria (6th–7th century AD) %	Classic Makuria (10th–11th century AD) %
Cattle	44.44	45.46
Sheep/ goat	42.69	34.06
Pig	12.86	20.46

head (H). The frequency and percentage share of bones from the proximal part of the pelvic limb (PPPL), torso (T), and the proximal part of the anterior limb (PPAL) were also high. Bones from the distal part of the limbs and the phalanges both represented very small groups. A comparative analysis of the percentages calculated for the cattle bones from Banganarti and the model skeleton (after Lasota-Moskalewska 2005: 237–238) demonstrated differences regarding chiefly three parts of the carcass: torso and proximal parts of limbs. Evidently less torso fragments were identified at Banganarti,

Table 3. Species distribution in the two general phases: Early Makuria (6th–7th century AD) and Classic Makuria (11th–12th century AD)

SPECIES	Early Makuria (6th–7th century AD)		Classic Makuria (11th–12th century AD)	
	n	%	n	%
Cattle <i>Bos primigenius f. domestica/f. taurus</i>	456	42.77	662	43.75
Sheep/goat <i>Ovis orientalis f. domestica/Capra aegagrus f. domestica</i>	438	41.08	496	32.80
Pig <i>Sus scrofa f. domestica</i>	132	12.40	298	19.70
Dromedary <i>Camelus dromedarius f. domestica</i>	34	3.20	22	1.45
Donkey <i>Equus africanus f. domestica</i>	1	0.09	29	1.91
Dog <i>Canis lupus f. domestica</i>	1	0.09	1	0.06
Dorcas gazelle <i>Gazella dorcas</i>	1	0.09	0	–
Bush pig <i>Potamochoerus larvatus</i>	0	–	1	0.06
Rodent <i>Rodentia</i>	0	–	1	0.06
African sharp-tooth catfish <i>Cabrias gariepinus</i>	2	0.18	3	0.19
<i>Etheria nilotica</i>	1	0.09	–	–
Total	1066	99.99	1513	100

whereas the PPAL and PPPL constituted a much larger percentage compared to the model skeleton.

Anatomical distribution analyses of sheep/goat remains [see *Table 4*] indicated the highest frequency and percentage share in the torso group. Head remains formed

a large share in the small ruminants group. There was also a high frequency of bones of the proximal parts of limbs, standing out significantly from model skeleton data. Another significant difference from the model concerned the share of small ruminant phalanges. Head remains

Table 4. Anatomical distribution of bones for the key species in two chronological phases: Early Makuria (6th–7th century AD) and Classic Makuria (11th–12th century AD)

BODY PART	Cattle		Sheep/goat		Pig	
	%	Model skeleton (%)	%	Model skeleton (%)	%	Model skeleton (%)
Early Makuria (6th–7th century AD)						
H	23.70	20	25.61	20	39.71	20
T	18.20	43	35.18	43	22.70	34
PPAL	14.25	5	17.37	5	20.56	4
DPAL	7.90	8	2.90	8	0.70	10
PPPL	20.61	3	13.14	3	12.05	3
DPPL	10.30	7	4.90	7	4.25	9
D	5.04	14	0.90	14	–	20
Classic Makuria (11th–12th century AD)						
H	26.22	20	28.00%	20	46,80	20
T	26.70	43	21.14%	43	23.00	34
PPAL	15.95	5	26.28%	5	13,63	4
DPAL	6.60	8	2.28%	8	1,87	10
PPPL	12.26	3	17.14	3	12,30	3
DPPL	6.90	7	4.00%	7	1,87	9
D	5.36	14	1.14%	14	0,53	20

Table 5. Age of animals at death in the two chronological phases: Early Makuria (6th–7th century AD) and Classic Makuria (11th–12th century AD) (fr = fragments)

SPECIES	Early Makuria (6th–7th century AD)			Classic Makuria (11th–12th century AD)		
	Juvenis	Subadult	Young/adult (%)	Juvenis	Subadult	Young/adult (%)
Cattle	0 fr	28 fr	6.1	3 fr	37 fr	6.0
Sheep/goat	2 fr	12 fr	3.2	1 fr	13 fr	2.8
Pig	0 fr	7 fr	5.3	6 fr	17 fr	7.7

Table 6. Sex of animals in the two chronological phases: Early Makuria (6th–7th century AD) and Classic Makuria (11th–12th century AD)

SPECIES	Early Makuria (6th–7th century AD)		Classic Makuria (11th–12th century AD)	
	Female	Male	Female	Male
Cattle	2	5	0	2
Sheep/goat	0	0	0	1 (goat)
Pig	0	0	0	3

Table 7. Osteometry of cattle bones in the Early Makuria phase (6th–7th century AD)

BONE	OSTEOMETRY (mm)	WH (cm)
<i>Proc. cornuales</i>	Basal circumference (BC)-200	
<i>Scapula</i>	SLC-58.36	
<i>Humerus</i>	Bd-76.28; 75.9; 71.9; 75.09	
<i>Radius</i>	Bd-71.56	
<i>O. metacarpi III+IV</i>	Bd-54.5; 58.15; 53.46; 57.99; 60.27; 56.58; 56.27 SD-53.39; Bd-62.43; GL-222.38	133.4
<i>Tibia</i>	Bd-64.36; 59.77	
<i>O. metatarsi III+IV</i>	Bd-50.64; SD-26.68 Bd-64.36; 53.27 Bp-47.86; SD-25.85; GL-248.25 Bp-47.72; SD-27.14 Bp-43.79; 46.34 Bd-59.77; 54.18 Bp-46.4; SD-28.34	132.8
<i>Talus</i>	GLI-74.0; GLI-72.97; GLm-65.26; Bd-46.17 GLI-67.87; Gm-62.5; Bd-39.01 GLI-64.4 GLI-66.82; GLm-59.17; Bd-41.53	
<i>Calcaneus</i>	GL-121.52; 137.41; 130.13; 160.32; 137.57; 144.4;	
<i>Ph. proximalis</i>	Bp-28.7; Bd-27.28; GL-58.9 Bp-29.64; Bd-28.93; GL-62.25 Bp-27.85; Bd-27.16; GL-66.88 Bp-26.46; Bd-27.67; SD-25.84; GL-62.82	
<i>Ph. media</i>	GL-44.94	
<i>Ph. distalis</i>	DLS-66.23	

predominated in the pig group as well. Bones from the torso, PPAL and PPPL groups demonstrated a relatively high frequency. The distal parts of limbs were characterized by very low percentages; no phalanges were recorded.

The percentage of immature cattle in the Early Makurite assemblage was 6.14% [Table 5], but none of the bones belonged to very young individuals (*juvenis*). All could be estimated as being of subadult age, that is, immature but almost the size of mature animals. In the sheep/goat group, two bones of very young animals and 12 fragments of subadult specimens were recorded (3.19%) [see Table 5]. The percentage of remains from immature pigs, all of subadult age, stood at 5.30%.

Only cattle bones from the Early Makurian phase at Banganarti retained

enough distinctive characteristics to allow identification of the sex. Five of them were identified as male and two as female [Table 6].

Cattle height at the withers could be calculated in two cases, both approximately 133 cm. Osteometric data calculated on appropriate point scales resulted in a skewed graph with a predominance of mean values [Table 7 and Fig. 2]. The graph shows a population that was homogeneous but morphologically unstable.

Skeletal material from early Makurite Banganarti yielded only 17 bones with evidence of damages, mainly charring and burning. Occasional cuts resulting from carcass sectioning were recorded as well. The only recorded pathological changes were noted on the jaw of a sheep and were caused by long-lasting inflammation [Table 9A and Fig. 4].

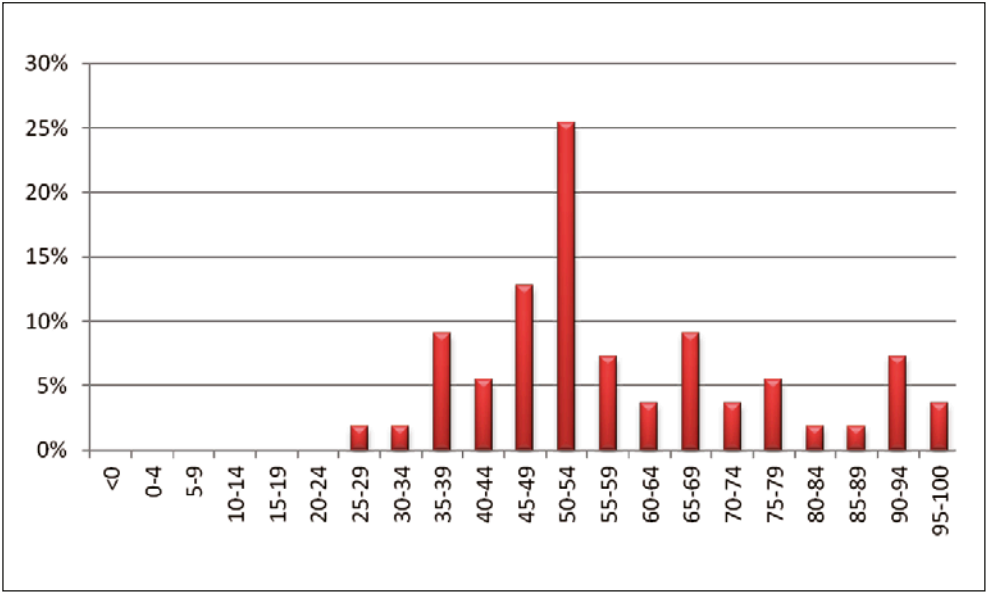


Fig. 2. Morphology of cattle in the Early Makuria phase (6th–7th century AD)

Table 8. Osteometry of cattle bones in the Classic Makuria phase (11th–12th century AD)

BONE	OSTEOMETRY (mm)
<i>Proc. cornuales</i>	Basal circumference (BC)-260
<i>Scapula</i>	SLC-74.42 SLC-78.96; GLp-63.46
<i>Humerus</i>	Bd-79.2; 76.0; 73.44; 71.72; 76.66; 76.99; 61.01
<i>Radius</i>	Bd-59.42; Bp-78.8; 78.62; 79.81; 83.38; 77.20
<i>O. metacarpi</i>	Bp-54.44; 56.36; 53.25 Bd-48.08; 50.11; 57.60; 57.39; Bp-51.68 SD-29.03 Bd-54.21
<i>Femur</i>	Bd-108.72; 82.67
<i>Tibia</i>	Bd-60; 61.48; 57.85; 57.96; 53.18
<i>O. metatarsi</i>	Bd-49.18; 53.17 Bp-47.7
<i>Talus</i>	GLI-69.67; GLm-63.24; Bd-43.30 GLI-68; GLm-63; Bd-45 GLI-65.80; GLm-60.82; Bd-38.88 GLI-66.91; GLm-60.67 GLm-67.42
<i>Calcaneus</i>	GL-138.51; 137.33; 131.06
<i>Ph. proximalis</i>	Bp-26.46; Bd-26.15; GL-62.93 Bp-28; Bd-27; SD-23; GL-66 Bp-27.84; Bd-26.9 Bp-26.42; Bd-27.6; GL-60.00 Bp-29.73; Bd-26.81; GL-66.29 Bp-29.95; Bd-27.32; GL-58.01 Bp-27.45; Bd-27.5; GL-55.87 Bp-27.66; 31.13 Bp-27.23; Bd-26.65; GL-58.74 Bp-28.64; Bd-28.36; GL-61.35 Bp-28.51; SD24.10; Bd-28.15; GL-60.50 Bp-30.33; SD-26.10; Bd-28.94; GL-58.42 Bp-27.02; SD-25.05; Bd-25.30; GL-57.34 Bp-27.77; Bd-27.09; GL-63.75
<i>Ph. media</i>	GL-40.0; 42.59; 39.36; 39.95 Bp-28.64; Bd-24.28; GL-42.6; 43.57; 43.25; 42.3; II Bp-24.08; SD-19.14; Bd-22.00; GL-35.79
<i>Ph. distalis</i>	DLS-60.63; Ld-48.17 DLS 60; 53.65

PHASE 2: CLASSIC MAKURIA

Archaeological contexts dated to the 11th–12th century AD yielded 1513 identifiable faunal remains [see *Table 3*]. They belonged to ten species, mainly mammals. The most numerous group was made up of cattle remains. Sheep/goat remains were also relatively frequent, as was pig. The other taxonomic groups were represented by decidedly smaller assemblages: donkey, dromedary, dog, bush pig and rodent. The only non-mammal remains were three bones of catfish. Cattle dominated the list of economically significant species [see *Table 2*].

The anatomical distribution analysis for species with key economic importance [see *Table 4*] demonstrated that almost all the elements of the cattle skeleton were found in 11th–12th century AD assemblages from Banganarti. As for small ruminants, some minor bones were missing (patella, metacarpalia and phalanges III). Analysis of the anatomical distribution of pig remains demonstrated the absence of only the smallest bones:

metacarpalia, phalanges II and III. Anatomical distribution of remains considered in categories of division of the carcass demonstrated a dominance of the head and torso remains. A high frequency of PPAL and PPPL remains were noted as well. Osteological remains from the distal parts of limbs and phalanges formed much smaller groups. A comparison with the model cattle skeleton revealed the main differences in the T, PPAL, PPPL and D groups. Remains of parts of the carcass attractive from a consumption point of view constituted a much higher percentage of the material compared to the model skeleton, but the share of phalanges was evidently smaller. Other parts of the carcass (head, distal parts of limbs) were recorded in percentages approximating data for the model skeleton. Regarding sheep/goat remains, head parts as well as PPAL and torso fragments demonstrated the highest frequency. PPPL fragments were also high in number, while the distal parts of limbs and phalanges were minimal. This was reflected in the comparison of

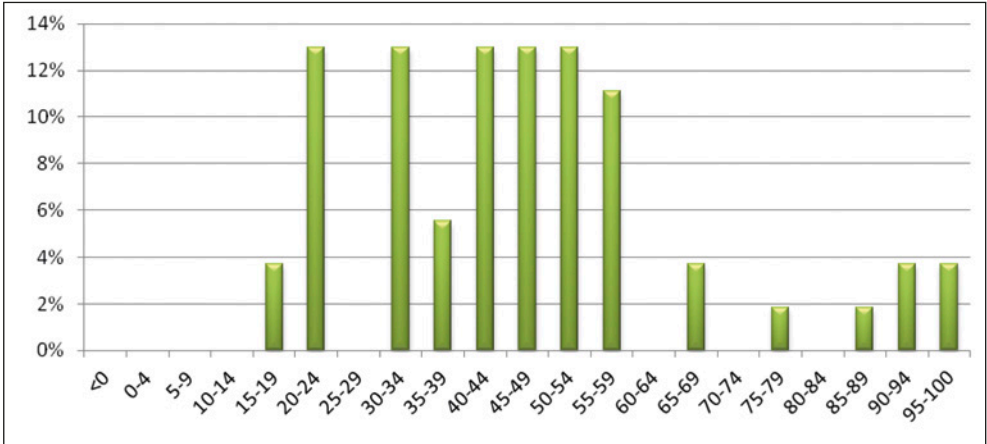


Fig. 3. Morphology of cattle in the Classic Makuria phase (11th–12th century AD)

percentage shares with model data, which evinced clear differences, especially with regard to remains from the torso, PPAL and PPPL categories. As for the pig group, head parts predominated, while the other groups were characterized by a definitely lower frequency: torso, PPAL and PPPL in diminishing order. The same number of bone remains from the distal parts of limbs was found and only two phalanges. An analysis of percentage shares indicated that almost half of the remains consisted of head bones and teeth. There was a high share of torso bone fragments and a comparable share of proximal parts of limbs. A comparative analysis of the anatomical distribution of pig remains as compared to the model skeleton revealed significant differences concerning all elements of the pig carcass.

Archaeozoological analysis identified 40 fragments of cattle bones from immature

specimens: three came from very young individuals and 37 from specimens of almost mature size. The combined share of young animals in the group of cattle remains was 6.14% [see *Table 5*]. The same was true of bones of sheep/goats with most of the immature individuals being slaughtered between 18 and 30 months of age. The share of immature animals among the small ruminants was 2.82%. The highest share of young animals was found among pig bones: 7.71% [see *Table 5*]. None of the faunal remains from late contexts in Banganarti could be identified as belonging to female specimens [see *Table 6*]. Two fragments of cattle bones, one bone of goat and three pig teeth were identified as belonging to male animals.

The state of preservation of animal remains from the younger archaeological contexts permitted osteometric measurements, cattle remains being the largest

Table 9A. Damage to bones from Banganarti from the Early Makuria phase (7th–10th century AD)

Species	Bone	Kind of damage
Banganarti 7th–10th century AD		
Sheep/goat	Mandibula	Post-inflammation changes
Sheep/goat	Humerus	Burnt
Sheep/goat	Radius	Burnt
Sheep/goat	O. metacarpi	Burnt
Sheep/goat	Pelvis	Burnt
Sheep/goat	Femur	Burnt
Sheep/goat	Femur	Burnt
Pig	Costa	Burnt
Pig	Femur	Burnt
Pig	O. metatarsi	Burnt
Cattle	Vertebra	Burnt
Cattle	Scapula	Burnt
Cattle	Humerus	Cut marks at the distal epiphysis
Cattle	Humerus	Burnt
Cattle	O. metacarpi	Burnt
Cattle	Talus	Burnt
Cattle	Calcaneus	Burnt
Cattle	O. metatarsi	Burnt

group of measured bones [see *Table 8* and *Fig. 3*]. Height at the withers could not be calculated for any specimen. Cattle morphology studies used the same method as for the earlier assemblage; the result was a graph with two clusters of values and a predominance of mean values. It suggested a heterogeneous population, the main herd being made up of middle-sized animals. Large cattle were imported.

The material from the 11th and 12th centuries demonstrated much more damages connected with successive stages of carcass division and meat processing for consumption [*Fig. 4*]. The largest group in this category was made up of cattle bones [see *Table 9B*]. Similarly as in the case of the material from the earlier contexts, a considerable number of bones bore evidence of direct contact with fire.

Table 9B. Damage to bones from Banganarti from the Classic Makuria phase (11th–12th century AD)

Species	Bone	Kind of damage
Banganarti 11th–12th century AD		
Cattle	Cranium	Burnt
Cattle	Mandibula	Burnt
Cattle	Vertebrae	Burnt
Cattle	Vertebrae	Burnt
Cattle	Scapula	Burnt
Cattle	Humerus	Cut marks
Cattle	Humerus	Burnt
Cattle	Humerus	Cut marks
Cattle	Humerus	Cut marks at the epiphysis Bd
Cattle	Humerus	Burnt
Cattle	Humerus	Cut marks
Cattle	Femur	Burnt
Cattle	Ph. proximalis	Burnt
Cattle	Ph. proximalis	Burnt
Cattle	Ph. proximalis	Burnt
Cattle	Ph. media	Burnt
Pig	Cranium	Burnt
Pig	Os frontalis	Cuted hole in the frontal bone
Pig	Os frontalis	Cuted hole in the frontal bone
Pig	Os frontalis	Cuted hole in the frontal bone
Pig	Os frontalis	Cuted hole in the frontal bone
Pig	Mandibula	Burnt
Pig	Costa	Cut marks
Pig	Costa	Illness changes
Pig	Tibia	Burnt
Pig	Calcaneus	Burnt
Sheep/goat	Cranium	Burnt
Sheep/goat	Scapula	Burnt
Sheep/goat	Humerus	Burnt
Sheep/goat	Radius	Burnt
Sheep/goat	Radius	Burnt
Sheep/goat	Femur	Burnt
Sheep/goat	Pelvis	Burnt
Sheep/goat	Vertebra	Burnt

RECAPITULATION

An archaeozoological examination of osteological material from the settlement surrounding the pilgrimage center in Banganarti has yielded key data on the

animal economy model in operation at the religious complex. The results have given an opportunity to analyze for the first time breeding patterns, as well as meat



Fig. 4. Evidence of anthropic damages on bones: top, traces of chopping on the humeral bones of cattle (11th–12th century AD); bottom left, frontal bone of pig with evidence of consumption-related damages (11th–12th century AD); bottom right, astragalus/talus bone with traces of cutting (11th–12th century AD) (Photos M. Osypińska)

consumption and economic significance of animals in communities other than the social elites (as can be assumed for the Dongola Palace and citadel assemblages, see Osypińska 2004; 2013; 2014). The present report on the faunal remains from Banganarti has demonstrated many shared characteristics with the data from Dongola. First, a progressing economic significance of cattle over the ages and secondly, the common breeding and consumption of pigs, which was not restricted solely to the capital. Current research leaves no doubt that the Christian period was the only episode in the history of the Middle Nile when pigs played such a significant role.

The faunal assemblage from Banganarti, especially from the settlement, points however to the specific nature of this site in terms of the animal economy. Beef and pork were consumed in a much higher volume and proportions to the small ruminants from the Dongola citadel. The diversified morphology of the cattle from Banganarti (Classic Makuria period in particular) is an interesting issue

as well. The main herd seems to have been fairly uniform throughout the studied periods. However, the population from the later phase reveals evidence of much larger animals.

Ataphonomic analysis of faunal remains from Banganarti has also shed new light on ways of meat preparation other than those already known from Dongola (Osypińska 2004; 2013; 2014). Roasting meat on an open fire seems to have been quite common at Banganarti. An unparalleled way of eating pork head has also been recorded; in both chronological phases, evidence of piercing the frontal bone was observed.

The archaeozoological analysis of material from the settlement in Banganarti has contributed significantly to studies of broadly understood Makurite economy. The presented data undoubtedly influenced the understanding of meat consumption (diet), ways of food processing, breeding models and animal behavior, as well as long-distance cattle trading in African civilizations in the past.

Dr. Marta Osypińska

Institute of Archaeology and Ethnology, Polish Academy of Sciences, Poznań
61-612 Poznań, Poland, ul. Rubież 46
m.osypinska@iaepan.edu.pl

REFERENCES

- Calkin, W. I. (1960). Izměňivost metapodii i ee značenie dlâ izučeniâ krupnogo rogatogo skota drevnosti [Variability of metapodium and its role for study of great cattle of ancient time]. *Bûlletin Moskovskogo Obščestva Ispytatelej Prirody*, 65(1), 109–126 [in Russian].
- Chaplin, R. E. (1971). *The study of animal bones from archaeological sites*. London: Seminar Press.
- Kolda, J. (1936). *Srovnávací anatomie zvířat domácích se zřetelem k anatomii člověka* [Comparative anatomy of domestic animals with regard to human anatomy]. Brno: Novina [in Czech].
- Lasota-Moskalewska, A. (2005). *Zwierzęta udomowione w dziejach ludzkości* [Domesticated animals in human history]. Warsaw: Wydawnictwa Uniwersytetu Warszawskiego [in Polish].

- Lutnicki, W. (1972). *Uzębienie zwierząt domowych [Dentition of domestic animals]*. Warsaw: PWN [in Polish].
- Müller, H.-H. (1973). Das Tierknochenmaterial aus den frühgeschichtlichen Siedlungen von Tornow, Kr. Calau. In J. Herrmann, *Die germanischen und slawischen Siedlungen und das mittelalterliche Dorf von Tornow, Kr. Calau* [=Schriften zur Ur- und Frühgeschichte 26] (pp. 267–310). Berlin: Akademie-Verlag.
- Osypińska, M. (2004). Animal bone remains from Old Dongola. Osteological material from Building B.I on Kom A. *PAM*, 15, 224–230.
- Osypińska, M. (2013). Archaeozoological research on animal remains from excavations in Dongola (Sudan) in 2010. *PAM*, 22, 229–247.
- Osypińska, M. (2014). Animal husbandry and meat consumption in Makurite Dongola, Sudan. Faunal evidence from the royal residence area, 6th–17th century. *Archeologia*, 64, 67–81.
- Sykes, N., and Symmons, R. (2007). Sexing cattle horn-cores: Problems and progress. *International Journal of Osteoarchaeology*, 17(5), 514–523.
- von den Driesch, A. (1976). *A guide to the measurement of animal bones from archaeological sites* [=Peabody Museum Bulletin 1]. Cambridge, MA: Peabody Museum of Archaeology and Ethnology, Harvard University.
- Żurawski, B. (2012). *St. Raphael Church I at Banganarti: Mid-sixth to mid-eleventh century. An introduction to the site and the epoch* [=GAMAR Monograph Series 2]. Gdańsk: Gdańsk Archaeological Museum and Heritage Protection Fund.
- Żurawski, B. (2014). *Kings and pilgrims: St. Raphael Church II at Banganarti, mid-eleventh to mid-eighteenth century* [=Nubia 5]. Warsaw: Neriton.

CONTENTS

CONTENTS

ACKNOWLEDGMENTS	10
ABBREVIATIONS.....	11

PAM REPORTS

PCMA FIELD MISSIONS AND PROJECTS IN 2012 AND 2013 (WITH MAP)	17
--	----

EGYPT

ALEXANDRIA: KOM EL-DIKKA

ALEXANDRIA: EXCAVATIONS AND PRESERVATION WORK ON KOM EL-DIKKA, SEASONS 2012 AND 2013 <i>Grzegorz Majcherek</i>	29
ISLAMIC NECROPOLIS AT KOM EL-DIKKA IN ALEXANDRIA: RESEARCH IN THE 2010–2013 SEASONS <i>Emanuela Kulicka</i>	62
ISLAMIC GLASS FROM AREA U (2012–2013) <i>Renata Kucharczyk</i>	73

MARINA EL-ALAMEIN

RESEARCH AND CONSERVATION IN MARINA EL-ALAMEIN IN THE 2012 AND 2013 SEASONS. THE POLISH–EGYPTIAN CONSERVATION MISSION <i>Rafał Czerner, Grażyna Bąkowska-Czerner, Wiesław Grzegorek</i>	87
SELECTED CONSERVATION WORK IN MARINA EL-ALAMEIN IN THE 2012 AND 2013 SEASONS <i>Marlena Koczorowska, Wojciech Osiak</i>	101
RESEARCH AND CONSERVATION IN THE ROMAN BATHS OF MARINA EL-ALAMEIN IN THE 2012 AND 2013 SEASONS (POLISH–EGYPTIAN CONSERVATION MISSION) <i>Rafał Czerner, Grażyna Bąkowska-Czerner, Grzegorz Majcherek</i>	113

TELL EL-RETABA

TELL EL-RETABA, SEASON 2012 <i>Sławomir Rzepka, Jozef Hudec, Łukasz Jarmużek, Lucia Hulková, Veronika Dubcová</i>	139
APPENDIX: TELL EL-RETABA 2012. PRELIMINARY REPORT ON ARCHAEOBOTANICAL INVESTIGATIONS <i>Claire Malleson</i>	156
TELL EL-RETABA 2012: THE POTTERY <i>Anna Wodzińska</i>	164

CONTENTS

TELL EL-FARKHA

TELL EL-FARKHA. EXCAVATIONS, 2012–2013

Marek Chłodnicki, Krzysztof M. Ciałowicz 173

TELL EL-MURRA

TELL EL-MURRA (NORTHEASTERN NILE DELTA SURVEY). SEASONS 2012–2013

Mariusz A. Jucha, Grzegorz Bąk-Pryc, Natalia Małecką-Drozd 199

SAQQARA

SAQQARA: SEASONS 2012 AND 2013/2014

Karol Mysliwiec 215

APPENDIX: CONSERVATION WORK IN SAQQARA (2012 AND 2014)

Zbigniew Godziejewski, Urszula Dąbrowska 224

SAQQARA 2012: THE POTTERY

Teodozja I. Rzeuska 230

WEST THEBES (ASASIF, DEIR EL-BAHARI) AND VALLEY OF THE NILE

THE TOMBS OF ASASIF: ARCHAEOLOGICAL EXPLORATION
IN THE 2013/2014 SEASON

Patryk Chudzik 239

TEXTILES FROM TOMB II IN DEIR EL-BAHARI: PRELIMINARY REPORT
FROM SEASON 2012/2013

Aleksandra Hallmann 247

DEIR EL-BAHARI. TEMPLE OF TUTHMOSIS III, CAMPAIGNS 2012–2013

Monika Dolińska 257

REPORT FROM FIELD RECONNAISSANCE AT GEBELEIN, KHOZAM AND EL-RIZEIQAT

Wojciech Ejsmond, Julia M. Chyla, Cezary Baka 265

DAKHLEH OASIS

DAKHLEH OASIS PROJECT, PETROGLYPH UNIT: SEASONS 2012 AND 2013

Ewa Kuciewicz, Paweł Polkowski, Michał Kobusiewicz 275

BERENIKE

BERENIKE PROJECT. HELLENISTIC FORT, ROMAN HARBOR, LATE ROMAN TEMPLE, AND
OTHER FIELDWORK: ARCHAEOLOGICAL WORK IN THE 2012 AND 2013 SEASONS

Steven E. Sidebotham, Iwona Zych, Joanna K. Rądkowska, Marek Woźniak 297

SUDAN

DONGOLA

DONGOLA. SEASONS IN 2012–2013

Włodzimierz Godlewski 325

APPENDIX: THE SKELETAL REMAINS FROM THE SANCTUARY OF ANNA
IN THE MONASTERY ON KOM H

Robert Mahler 340

CONTENTS

WALL INSCRIPTIONS IN THE SOUTHWEST ANNEX TO THE MONASTERY ON KOM H AT DONGOLA: REPORT ON WORK IN THE 2013 SEASON <i>Adam Łajtar</i>	344
CRYPT 3 IN THE NORTHWEST ANNEX OF THE MONASTERY ON KOM H IN DONGOLA: REPORT ON THE EXPLORATION IN 2012 <i>Robert Mahler, Włodzimierz Godlewski, Katarzyna Danys-Lasek, Barbara Czaja</i>	352
BANGANARTI AND SELIB	
BANGANARTI AND SELIB IN 2011/2012 AND 2013 <i>Bogdan Żurawski</i>	369
EXCAVATIONS AT SELIB 2 IN 2012 <i>Roksana Hajduga, Katarzyna Solarska</i>	389
SELIB 1. PRELIMINARY REPORT FOR THE 2012 AND 2013 SEASONS <i>Aneta Cedro</i>	397
FAUNAL REMAINS FROM THE FORTIFIED SETTLEMENT AROUND THE CHURCH AT BANGANARTI IN SUDAN <i>Marta Osypińska</i>	411
EARLY MAKURIA (MTOM) PROJECT	
ANIMAL REMAINS FROM THE EARLY MAKURIAN CEMETERY IN EL-ZUMA (SEASON 2013) <i>Urszula Iwaszczuk</i>	425
GHAZALI	
GHAZALI 2012: PRELIMINARY REPORT <i>Artur Obłuski, Grzegorz Ochala, Miron Bogacki, Wiesław Małkowski, Szymon Maślak, Zaki ed-Din Mahmoud</i>	431
CYPRUS	
NEA PAPHOS	
NEA PAPHOS. SEASONS 2012 AND 2013 <i>Henryk Meyza</i>	443
LEBANON	
JIYEH	
PRELIMINARY REPORT ON THE 2012 AND 2013 EXCAVATION SEASONS AT JIYEH (PORPHYREON): WORK IN SECTOR D (RESIDENTIAL QUARTER) <i>Tomasz Waliszewski, Magdalena Antos, Piotr Jaworski, Piotr Makowski, Marcin Romaniuk, Rafał Solecki, Agnieszka Szymczak</i>	453
PRELIMINARY RESULTS OF A STRATIGRAPHIC ANALYSIS OF LATE ROMAN AND EARLY BYZANTINE ARCHITECTURE IN THE RESIDENTIAL QUARTER OF JIYEH <i>Michał Dzik</i>	475

CONTENTS

RESULTS OF A SURVEY CONDUCTED IN THE AREA OF THE JIYEH MARINA RESORT HOTEL COMPLEX IN THE 2012 SEASON <i>Zofia Kowarska, Szymon Lenarczyk</i>	491
---	-----

KUWAIT

AL-SUBIYAH AND FAILAKA ISLAND

TUMULUS BURIAL FIELD ON THE NORTH COAST OF KUWAIT BAY. PRELIMINARY EXCAVATION REPORT ON THE SPRING SEASON IN 2012 <i>Łukasz Rutkowski</i>	505
CHRISTIAN SETTLEMENT AT FAILAKA, QUSUR SITE (KUWAIT): EXCAVATIONS IN 2011 AND 2013 <i>Magdalena Żurek</i>	529
PRELIMINARY REPORT ON THE ARCHAEOLOGICAL SURVEY OF THE JOINT KUWAITI–POLISH MISSION, FAILAKA ISLAND, 2012 <i>Franciszek Pawlicki</i>	547
FAILAKA ARCHAEOLOGICAL RESEARCH PROJECT. PRELIMINARY RESULTS AFTER THE FIRST SEASON OF EXCAVATION AT THE KHARAIB EL-DESHT SITE IN 2013 <i>Agnieszka Pieńkowska</i>	560
APPENDIX 1: KHARAIB EL-DESHT 2013: POTTERY. PRELIMINARY REPORT <i>Marta Mierzejewska</i>	571
APPENDIX 2: SURVEY OF KHARAIB EL-DESHT BAY ON FAILAKA ISLAND: PRELIMINARY REPORT <i>Magdalena Nowakowska</i>	579

IRAQI KURDISTAN

NEWCOMERS AND AUTOCHTHONS. PRELIMINARY REPORT ON 2013 ACTIVITIES IN THE KURDISTAN AUTONOMOUS REGION, IRAQ <i>Dorota Ławecka</i>	591
---	-----

PAM STUDIES

LEVALLOIS TRADITION EPIGONES IN THE MIDDLE NILE VALLEY: SURVEY IN THE AFFAD BASIN <i>Marta Osypińska, Piotr Osypiński</i>	601
ZOOMORPHIC CLAY FIGURINES FROM TELL ARBID. PRELIMINARY REPORT <i>Maciej Makowski</i>	627
PLANT MACROFOSSILS FROM THE SITE OF TELL ARBID, NORTHEAST SYRIA (3RD–2ND MILLENNIUM BC). PRELIMINARY REPORT <i>Aldona Mueller-Bieniek, Krystyna Wasylkowa, Anna Smogorzewska</i>	657
THE ANIMAL ECONOMY OF PEOPLE LIVING IN THE SETTLEMENT OF TELL RAD SHAQRAH (SYRIA) <i>Joanna Piątkowska-Matecka, Rafał Koliński</i>	675

CONTENTS

THE SOLAR ALTAR IN THE TEMPLE OF HATSHEPSUT AT DEIR EL-BAHARI: ARCHITECTURE AND IDEOLOGY <i>Andrzej Ćwiek</i>	693
FAIENCE OBJECTS FROM THE TOMB MMA 1152 AT SHEIKH ABD EL-GURNA <i>Patryk Chudzik, Andrzej Ćwiek</i>	701
INDIAN STEEL: A FORGOTTEN COMMODITY OF THE GREAT TRADE ROUTES <i>Marek Woźniak</i>	709
MONETIZATION OF ROMAN EGYPT DURING THE FLAVIAN DYNASTY (AD 69–96): THE CASE OF ALEXANDRIA AND BERENIKE <i>Katarzyna Lach</i>	727
CROSS-CULTURAL BEAD ENCOUNTERS AT THE RED SEA PORT SITE OF BERENIKE, EGYPT. PRELIMINARY ASSESSMENT (SEASONS 2009–2012) <i>Joanna Then-Obluska</i>	735
A NEW LOOK ON SOME OLD GLASS FINDS FROM PALMYRA <i>Krystyna Gawlikowska</i>	779
NEW INSIGHTS INTO NUBIAN ARCHERY <i>Łukasz Zieliński</i>	791
INDEX OF SITES	803
GUIDELINES FOR AUTHORS	804
PCMA PUBLICATIONS	805

POLISH ARCHAEOLOGY IN THE MEDITERRANEAN (PAM)
Annual of the Polish Centre of Mediterranean Archaeology, University of Warsaw

PAM Editor-in-chief: Iwona Zych

Volume 24/1: Research

All texts peer-reviewed.

<http://www.pcma.uw.edu.pl/en/pam-journal/pam-independent-reviewers/>

Press-reviewing process: Urszula Wicenciak

Bibliographic editor: Aleksandra Zych

Language consultation: Iwona Zych

Technical editor: Iwona Zych

Digital processing: Ewa Czyżewska-Zalewska

Image processing and copyediting assistance: Ewa Czyżewska-Zalewska, Szymon Maślak, Marta Momot, Marek PuszkarSKI, Urszula Wicenciak

Original graphic design: Jerzy Kowalski, updated by Ewa Czyżewska-Zalewska for PCMA

DTP: Ewa Czyżewska-Zalewska, assisted by Agnieszka Dzwonek

Cover: Tumulus SB 100 from the Al-Subiyah region of Kuwait during exploration
(Photo M. Makowski)

ISSN 1234–5415 (Print), ISSN 2083–537X (Online)

© Polish Centre of Mediterranean Archaeology, University of Warsaw, Warszawa 2015

© Wydawnictwa Uniwersytetu Warszawskiego, Warszawa 2015

All rights reserved. No part of this publication may be reproduced or transmitted in any form or by any means, electronic or mechanical, including photocopying, recording, or any information storage and retrieval system, without permission in writing from the Polish Centre of Mediterranean Archaeology of the University of Warsaw.

Polish Centre of Mediterranean Archaeology, University of Warsaw

00-497 Warszawa, Poland, ul. Nowy Świat 4

e-mail: pam.pcma@uw.edu.pl

www.pcma.uw.edu.pl

Orders can be placed c/o Agnieszka Pieńkowska

a.pienkowska@uw.edu.pl

University of Warsaw Press

00-497 Warszawa, Poland, ul. Nowy Świat 4

www.wuw.pl; e-mail: wuw@uw.edu.pl

Internet Bookshop: www.wuw.pl/ksiegarnia

Printed in Poland

POLISH ARCHAEOLOGY IN THE MEDITERRANEAN

Published annually since 1990



PAM XXIV/1 Research

REPORTS

Fieldwork projects carried out by PCMA teams in the Ancient Near East and Africa

- scope: archaeological, geophysical, restoration and study work
- areas of interest: Egypt, Sudan, Cyprus, Syria, Lebanon, Kuwait, Iraq
- timespan: ten millennia from prehistory and protohistory through the medieval period

STUDIES

- archaeological, architectural and material research within the fields of study covered by PCMA fieldwork

PAM XXIV/2 Special Studies

Deir el-Bahari Studies

Editor Zbigniew E. Szafrński

Volume dedicated to research on specific egyptological and archaeological themes resulting from the ongoing work of the Polish conservation and restoration project in the Temple of Queen Hatshepsut in Deir el-Bahari (West Thebes, Luxor, Egypt). The 11 contributions included in this book concern mostly a later phase in the occupation of the complex, in the Third Intermediate Period (11th–8th century BC), when the abandoned temple was reused as a burial ground. A few of the articles refer to the original architectural form and decoration of the temple from the times of Hatshepsut (15th century BC). Also included is an article on tombs of three other queens of the Eighteenth Dynasty in the Valley of the Kings.

Available as full texts on-line at www.pcma.uw.edu.pl

PAM volumes 17 to the present available on-line from www.ceeol.com

Information and orders:

www.pcma.uw.edu.pl

pcma@uw.edu.pl

pam.pcma@uw.edu.pl

www.wuw.pl/ksiegarnia

RESEARCH

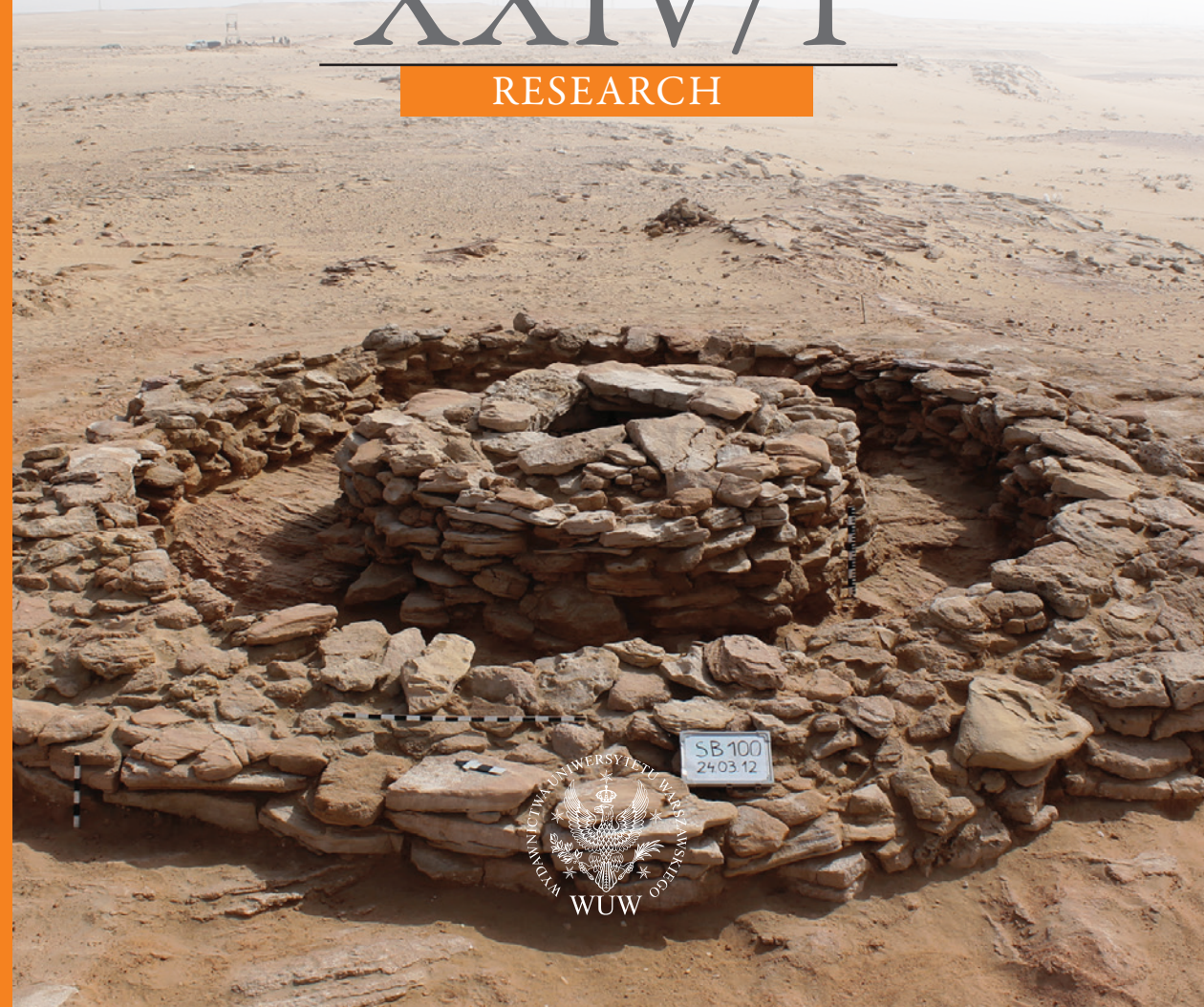
PAM XXIV/1

POLISH CENTRE OF MEDITERRANEAN ARCHAEOLOGY
UNIVERSITY OF WARSAW

POLISH ARCHAEOLOGY IN THE MEDITERRANEAN

XXIV/1

RESEARCH



Polish Centre of
Mediterranean Archaeology

