



UNIVERSITY  
OF WARSAW

Polish Centre of  
Mediterranean Archaeology



---

**Title: Tell el-Retaba 2012: the pottery.**

**Author(s) : Anna Wodzińska**

*Journal: Polish Archaeology in the Mediterranean 24/1 (Research)*

**Year: 2015**

**Pages: 164 - 172**

**ISSN 1234–5415 (Print), ISSN 2083–537X (Online)**

**Publisher: Polish Centre of Mediterranean Archaeology, University of Warsaw (PCMA UW),  
Wydawnictwa Uniwersytetu Warszawskiego (WUW)**

**[www.pcma.uw.edu.pl](http://www.pcma.uw.edu.pl) [www.wuw.edu.pl](http://www.wuw.edu.pl)**

---

**Abstract:** Archaeological remains excavated by the Polish–Slovak Archaeological Mission in Tell el-Retaba can be well dated to the New Kingdom till the Late Period. During the 2012 season domestic layers from the Hyksos period were found, indicating that the site was occupied for the first time around the end of the Thirteenth and beginning of the Fifteenth Dynasties. Next to the houses three Hyksos graves were found. Archaeological work also revealed houses from the early Eighteenth Dynasty located just above the Hyksos structures in Area 7. Very interesting material came from the late Twentieth Dynasty and Third Intermediate Period houses excavated in Area 9. Rich pottery assemblages mostly of domestic character have been recovered from all of the structures.

**Keywords:** Tell el-Retaba, late Thirteenth Dynasty, Hyksos, early Eighteenth Dynasty, late Twentieth Dynasty, Third Intermediate Period, Late Period, house, grave, Tell el-Yahudiya juglet, Black Lustrous Ware

تل الرطابة / الفخار : 2012  
Anna Wodzińska

**الملخص :** البقايا الأثرية المكتشفة بواسطة البعثة البولندية - السلوفاكية للآثار في تل الرطابة تؤرخ بصورة جيدة إلى الدولة الحديثة حتى العصر المتأخر . خلال موسم 2012 تم العثور على طبقات داخلية من عصر الهكسوس تدل على أن الموقع كان مشغلاً منذ البداية حوالي نهاية حكم الأسرة الثالثة عشر وبداية الأسرة الخامسة عشر، و بجانب البيوت الثلاثة وجدت مقابر للهكسوس . وكشفت أعمال التنقيب عن منازل من حقبة الأسرة الثامنة عشر تقع فوق هياكل الهكسوس في المنطقة 7 بالإضافة إلى مواد مثيرة للانتباه تعود لفترة الأسرة العشرين والفترة المتأخرة من عصر الانتقال الثالث من منازل مكتشفة في المنطقة 9 ومجموعة الفخار الغنية ذات الطابع المحلي تم إستعادتها من الهياكل .

*POLISH ARCHAEOLOGY IN THE MEDITERRANEAN (PAM)*  
*Annual of the Polish Centre of Mediterranean Archaeology, University of Warsaw*

*Editorial Board*

Piotr Bieliński  
Krzysztof M. Ciałowicz  
Wiktor Andrzej Daszewski  
Michał Gawlikowski  
Włodzimierz Godlewski  
Karol Myśliwiec  
Tomasz Waliszewski

*International Advisory Board*

Jean Charles Balty  
Charles Bonnet  
Giorgio Buccellati  
Stan Hendrickx  
Johanna Hlaubek

Peer-reviewed by members of the *PAM* committee of independent reviewers.  
<http://www.pcma.uw.edu.pl/en/pam-journal/pam-independent-reviewers/>

POLISH CENTRE OF MEDITERRANEAN ARCHAEOLOGY  
UNIVERSITY OF WARSAW

# POLISH ARCHAEOLOGY IN THE MEDITERRANEAN

XXIV/1

---

RESEARCH



## ABBREVIATIONS

|               |   |
|---------------|---|
| <i>AA</i>     | <i>Archäologischer Anzeiger; Jahrbuch des Deutschen Archäologischen Instituts</i> (Berlin)                              |
| <i>ANM</i>    | <i>Archéologie du Nil Moyen</i> (Lille)   |
| <i>ASAE</i>   | <i>Annales du Service des Antiquités de l'Égypte</i> (Cairo)  |
| <i>AV</i>     | <i>Archäologische Veröffentlichungen, Deutsches Archäologisches Institut, Abteilung Kairo</i> (Berlin–Mainz am Rhein)   |
| <i>BAAL</i>   | <i>Bulletin d'archéologie et d'architecture libanaises</i> (Beirut)   |
| <i>BAH</i>    | <i>Bibliothèque archéologique et historique</i> (Paris)   |
| <i>BAR IS</i> | <i>British Archaeology Reports International Series</i> (Oxford)  |
| <i>BASOR</i>  | <i>Bulletin of the American Schools of Oriental Research</i> (Ann Arbor, MI)  |
| <i>BCH</i>    | <i>Bulletin de correspondance hellénique</i> (Paris)  |
| <i>BdE</i>    | <i>Bibliothèque d'étude</i> (Cairo)   |
| <i>BIFAO</i>  | <i>Bulletin de l'Institut français d'archéologie orientale</i> (Cairo)  |
| <i>BSAA</i>   | <i>Bulletin de la Société d'archéologie d'Alexandrie</i> (Cairo)  |
| <i>BSFE</i>   | <i>Bulletin de la Société française d'égyptologie</i> (Paris)   |
| <i>CCE</i>    | <i>Cahiers de la céramique égyptienne</i> (Cairo)   |
| <i>EtTrav</i> | <i>Études et travaux. Travaux du Centre d'archéologie méditerranéenne de l'Académie des sciences polonaise</i> (Warsaw) |
| <i>FIFAO</i>  | <i>Fouilles de l'Institut français d'archéologie orientale</i> (Cairo)  |
| <i>GAMAR</i>  | <i>Gdańsk Archaeological Museum African Reports</i> (Gdańsk)  |
| <i>GM</i>     | <i>Göttinger Miszellen</i> (Göttingen)  |
| <i>IAMS</i>   | <i>Institute of Archaeo-Metallurgical Studies</i> (London)  |
| <i>JARCE</i>  | <i>Journal of the American Research Center in Egypt</i> (Boston–Princeton–New York–Cairo)                               |
| <i>JEA</i>    | <i>Journal of Egyptian Archaeology</i> (London)   |
| <i>JGS</i>    | <i>Journal of Glass Studies</i> (Corning, NY)   |
| <i>JJP</i>    | <i>Journal of Juristic Papyrology</i> (Warsaw)  |
| <i>JRS</i>    | <i>Journal of Roman Studies</i> (London)  |
| <i>MDAIK</i>  | <i>Mitteilungen des Deutschen Archäologischen Instituts, Abteilung Kairo</i> (Wiesbaden)                                |
| <i>OIP</i>    | <i>Oriental Institute Publications</i> (Chicago)  |
| <i>OLA</i>    | <i>Orientalia lovaniensia analecta</i> (Louvain)  |
| <i>PAM</i>    | <i>Polish Archaeology in the Mediterranean</i> (Warsaw)   |
| <i>PSAS</i>   | <i>Proceedings of the Seminar for Arabian Studies</i> (London)  |
| <i>SAAC</i>   | <i>Studies in Ancient Art and Civilisation</i> (Kraków)   |
| <i>SAK</i>    | <i>Studien zur altägyptischen Kultur</i> (Hamburg)  |
| <i>SAOC</i>   | <i>Studies in Ancient Oriental Civilization</i> (Chicago)   |
| <i>WVDOG</i>  | <i>Wissenschaftliche Veröffentlichungen der deutschen Orient-Gesellschaft</i> (Berlin–Leipzig)                          |

# TELL EL-RETABA 2012: THE POTTERY

Anna Wodzińska

Institute of Archaeology, University of Warsaw

**Abstract:** Archaeological remains excavated by the Polish–Slovak Archaeological Mission in Tell el-Retaba can be well dated to the New Kingdom till the Late Period. During the 2012 season domestic layers from the Hyksos period were found, indicating that the site was occupied for the first time around the end of the Thirteenth and beginning of the Fifteenth Dynasties. Next to the houses three Hyksos graves were found. Archaeological work also revealed houses from the early Eighteenth Dynasty located just above the Hyksos structures in Area 7. Very interesting material came from the late Twentieth Dynasty and Third Intermediate Period houses excavated in Area 9. Rich pottery assemblages mostly of domestic character have been recovered from all of the structures.

**Keywords:** Tell el-Retaba, late Thirteenth Dynasty, Hyksos, early Eighteenth Dynasty, late Twentieth Dynasty, Third Intermediate Period, Late Period, house, grave, Tell el-Yahudiya juglet, Black Lustrous Ware

During the 2012 season of work at Tell el-Retaba 3000 diagnostic fragments of pottery have been recorded, 845 of them were drawn.

Material from several periods was recovered: late Thirteenth–Fifteenth Dynasty, early Eighteenth Dynasty, Nineteenth Dynasty, possibly end of Twentieth–beginning of Twenty-first Dynasties, Third Intermediate Period and Late Period.

The ceramic material came from three areas: 3, 7 and 9. Areas 3 and partly 5 were already excavated in previous seasons. Only a small trial trench was dug there during the 2012 season. According to the pottery, the material can be dated to the early

Eighteenth Dynasty, possibly Hatshepsut/Tuthmosis III reigns (see also Rzepka et al. 2014: 274–281). Most of the found pottery came from the Third Intermediate Period units of Area 3 [Fig. 1].

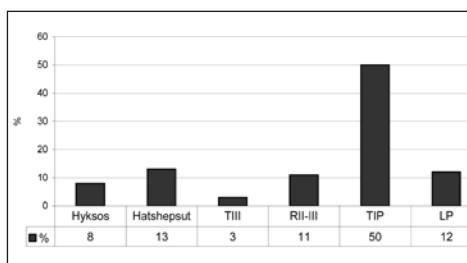


Fig. 1. Diagram showing general occurrence of pottery found in Tell el-Retaba during 2012, divided by period

Field drawings S. Gromadzka, A. Pawlikowska, A. Poniewierska, A. Ryś; digital drawings A. Wodzińska

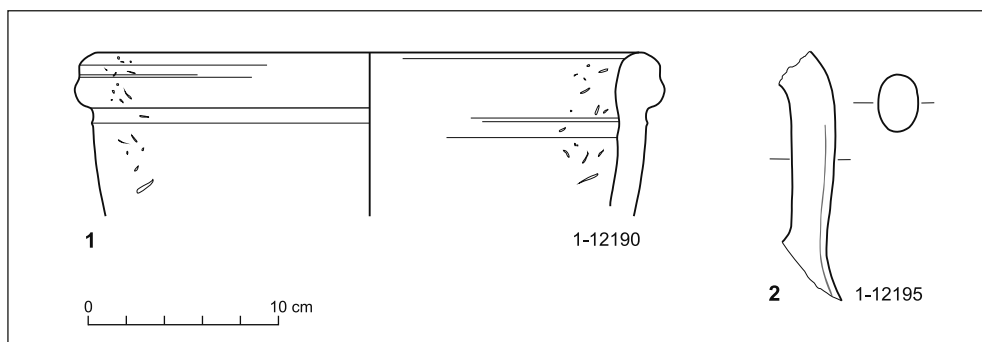
## AREA 7

The pottery from Area 7 can be divided into several assemblages. From the top layers excavated eroded material was found, not associated with any structures. It can be well dated to the Late Period. Among others, several deep bowls with a ledge below the rim on their external surface were found [*Fig. 2:1*]. Such bowls are well known in Tell el-Retaba and other Egyptian sites (Wodzińska 2011: 1023, *Fig. 12.5*). As well as the Egyptian pottery, some imported vessels were also found. For instance, fragments of Greek amphorae, one example being a red painted handle of a Chian amphora [*Fig. 2:2*] (Dupont 1998: 148–151, *Fig. 23.2*).

Immediately below the Late Period surface, layers dated to the early Eighteenth Dynasty (squares Y95–X125, Y95–X120 and Y100–X120), and late Thirteenth–Fifteenth Dynasties (squares Y100–X110, Y110–X115, and Y115–X115) were excavated.

The early Eighteenth Dynasty pottery can be dated more precisely, probably to the reign of Hatshepsut/Tuthmosis III. *Fig. 3* shows a selection of early Eighteenth

Dynasty ceramic vessels. Wine amphorae made of marl D fabric and covered with cream burnished slip were not found complete, but their fragments, especially handles [*Fig. 3:1*] and bases, occurred in many instances. There were many simple open forms, especially two kinds. Bowls with hemispherical body, flat base and undulating walls and red painted rims, often additionally decorated with simple splashes of red paint [*Fig. 3:2*]. This kind of decoration appears in many sites dated to Hatshepsut/Tuthmosis III–Amenophis II (Aston 2006; see also Bourriau 2010: 81, 91, *Fig. 21*, type 3.2.3), however the Tell el-Retaba pots can be placed in the Hatshepsut–Tuthmosis III time frame. The second most common open form is represented by red slipped hemispherical bowls with black painted rims [*Fig. 3:3*] (see Hein and János 2004: 106–107, *Fig. 80B*, nos 31–34; Bourriau 2010: 56, 62, *Fig. 12*, type 4.2.1). A number of closed cooking pots were also found. The example in *Fig. 3:4* shows a vessel with sharp carination and triangular, slightly recurved rim. Its entire



*Fig. 2. Deep bowl with a ledge below rim on the external surface and Chian amphora handle, Late Period*

body was covered with a thin layer of red slip. Some imitation Cypriot Biochrome ware pots were relatively common in the early Eighteenth Dynasty units, however only body sherds were preserved [Fig. 3:5] (see also Rzepka et al. 2014: 275–277). Three fragments of

Cypriot Black Lustrous Ware were found, of which one base is shown in Fig. 3:6. The Cypriot imports are not new to Tell el-Retaba. Some fragments of Black but also Red Lustrous Ware were found during the 2011 season (Rzepka et al. 2014: 279–282).

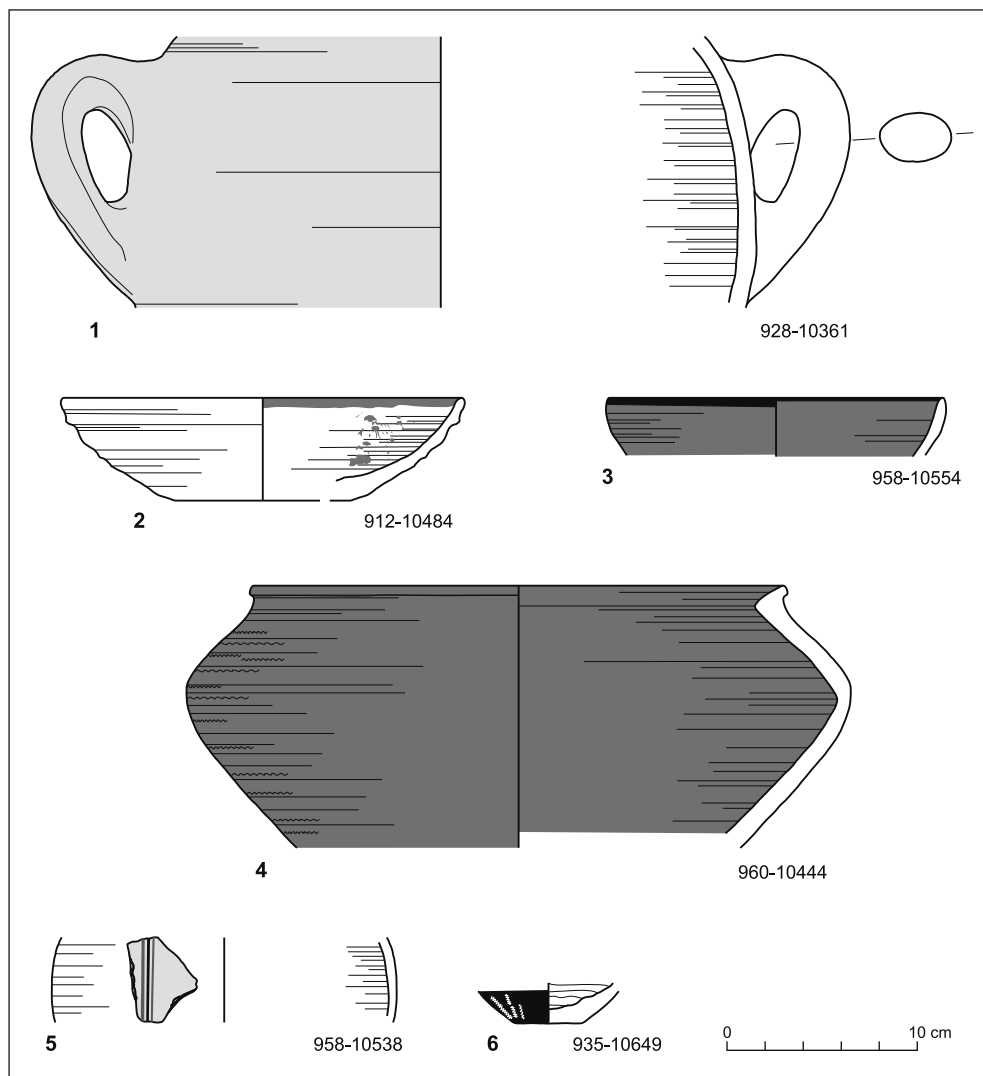


Fig. 3. Selection of pottery from the early Eighteenth Dynasty



The late Thirteenth–Fifteenth Dynasties pottery came from two contexts: domestic and funerary. These two assemblages of pots are thus different.

The funerary vessels found in graves were almost intact. A few types can be easily recognized. A juglet with biconical undecorated body [Fig. 4:1] was covered with black slip and well burnished. It had a very characteristic handle made of two coils of clay attached to its rim and shoulder. Such undecorated juglets are known also in Tell el Dab'a where they can be associated with strata E3 and E2 dated to the late Thirteenth–beginning of the Fifteenth Dynasties (Bietak 1991: for instance 86–87, 124–125, 150, Fig. 46 No. 1883, 80 No. 1639, see also Fig. 112 No. 2070; Forstner-Müller 2008: 76). A small juglet with one handle, the so-called Tell el-Yahudiya ware [Fig. 4:2],

was covered with thin black slip and burnished. Its surface was then decorated with impressed patterns. Its handle was also made of two jointed coils. The vessel can be classified in the Aston and Bietak typology as type group I.3.2c and can be placed among pots from the late Thirteenth Dynasty (Aston and Bietak 2012: 169, 555).

Small cups with slightly incurved walls, simple rims and round bases made of Nile B1 fabric were also found in domestic units, however the funerary pots are complete [Fig. 4:3]. These were standard grave goods of the late Thirteenth–beginning of the Fifteenth Dynasties (Bietak 1991: 144, Abb. 103, stratum E2). Shallow bowls with ledge rims and flat bases covered with red slip were also common [Fig. 4:4] (see Bietak 1991: 85, 87, Fig. 46 No. 1878; Forstner-Müller 2008:

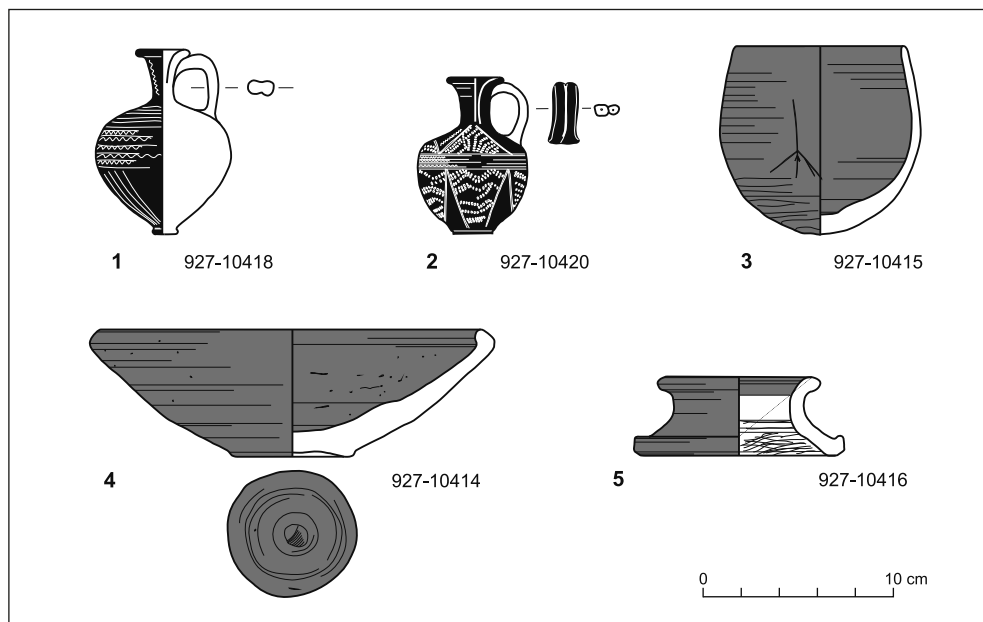


Fig. 4. Selection of pots found in one of the Hyksos tombs

209–210 No. 8844B). The graves also contained low pot stands with external surfaces covered with red slip [Fig. 4:5]. Such forms are also known in domestic contexts (see Kopetzky 2010: 155, stratum E3).

Hyksos domestic ceramics were associated with a house. The material is very fragmented, however it was possible to recognize very diverse types, including many bowls, storage jars, and also cooking pots. See Fig. 5 for a selection of domestic pottery fragments from the Hyksos period. Two types of cooking pots were found. The first is a handmade vessel

made of strawy Nile fabric with decorative depressions made with finger just below a slightly recurved rim [Fig. 5:1]. Such pots are usually associated with early Hyksos occupation (early Fifteenth Dynasty) (Redmount 1989: 825–827, Fig. 137; 1995: 186). A second type of cooking pot is a vessel with thickened incurved rim made of sandy Nile E fabric with smoothed surface [Fig. 5:3] (Redmount 1989: 828, 830, Fig. 138). Another common domestic vessel was a red slipped and well burnished cup made of finer version of Nile B2 fabric [Fig. 5:2] (Redmount 1989: 816, 818–820, Fig. 135).

## AREA 9

The excavations were continued in Area 9, where four phases of occupation can be distinguished: Nineteenth Dynasty; small units associated with the enclosure wall built by Ramesses II; structures dated to the early and late Twentieth Dynasty; and houses from the Third Intermediate Period.

A very large group of vessels [Fig. 6] was found in the early Twentieth Dynasty

house. Some of the vessels were relatively well preserved, probably found *in situ*. The date of the material is confirmed by the presence of large wine amphorae made of marl D fabric and covered with thin cream slip [Fig. 6:1]. Their elongated body and narrow flat bases are reminiscent features of amphorae from Thebes West but also Qantir (Aston 1998: 518–519, no. 2080; 2004: 195–196, Fig. 11). Large

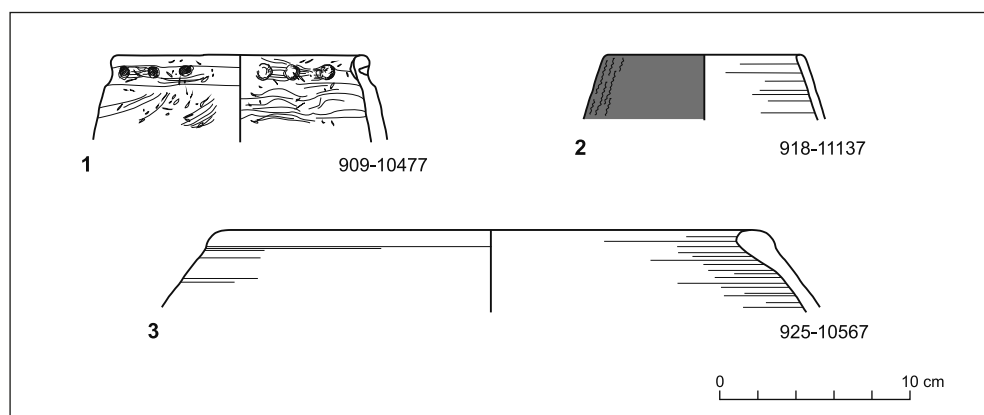


Fig. 5. Selection of Hyksos domestic pottery

pilgrim flasks also made of marl D fabric came from the same phase. One was covered with cream slip and well smoothed. Its rim, neck and handles were red painted [Fig. 6:2]. The second pilgrim flask was almost complete, showing a thickened flaring rim, round body made of two plates

and two handles attached to the vessel between upper part of its neck and upper part of the shoulder [Fig. 6:3].

The assemblage also contained hemispherical cups made of Nile B2 fabric with red painted rims [Fig. 6:4] (Aston 2007: 31, Fig. 21, Nos 41–42).

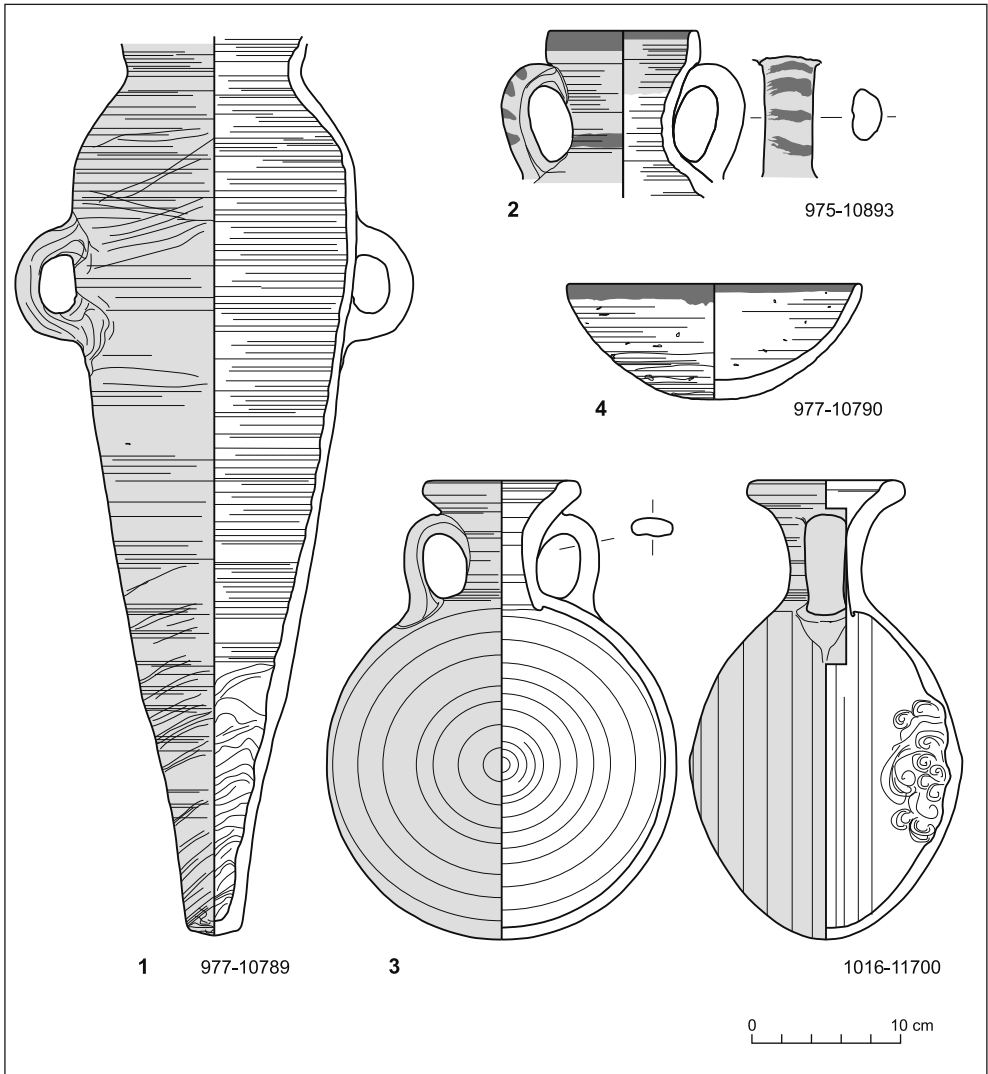


Fig. 6. Selection of Ramesside pottery

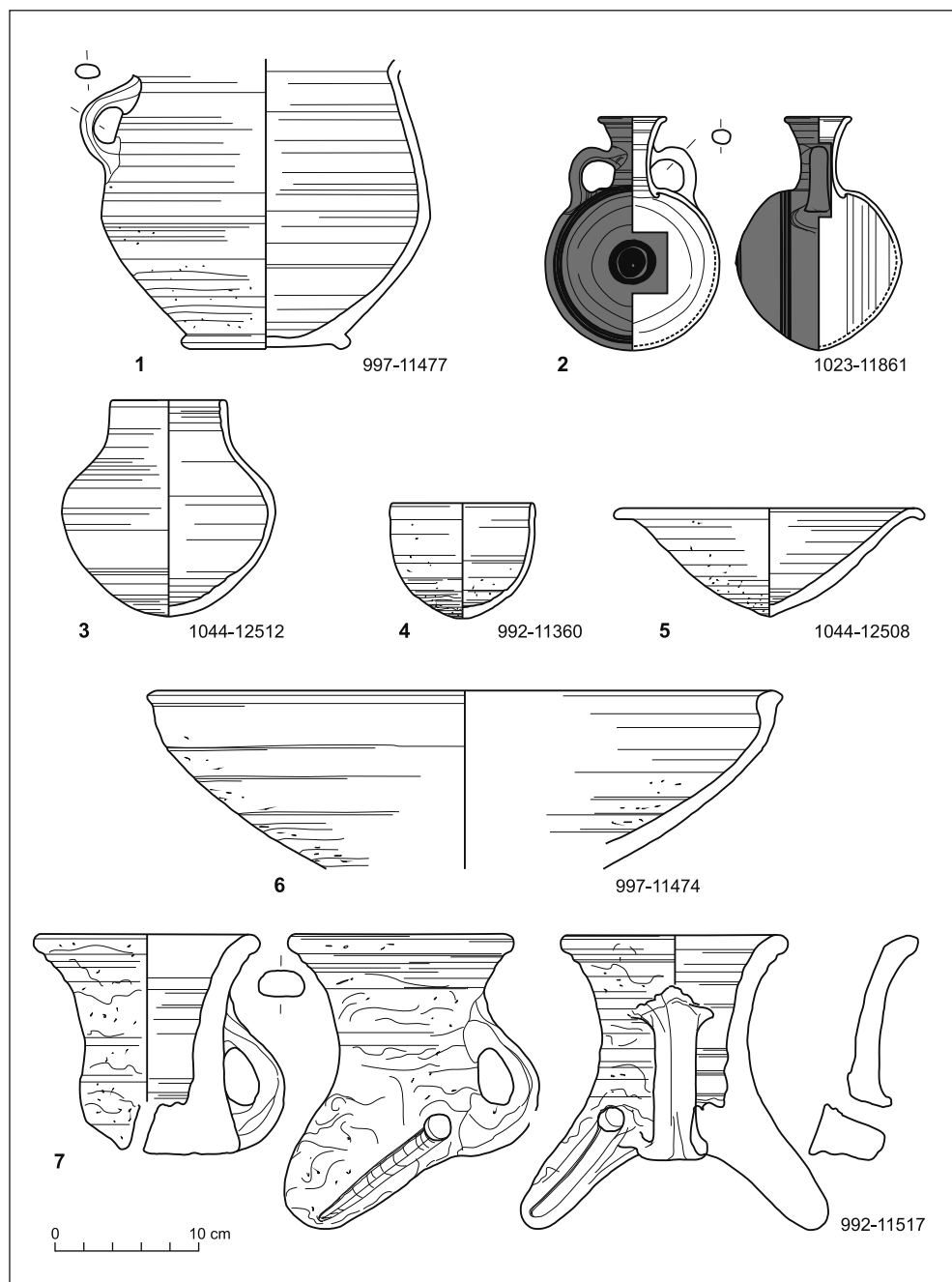


Fig. 7. Selection of pottery from the Third Intermediate Period

The richest ceramic group was recovered from Third Intermediate Period houses. A variety of vessels are typical Twenty-first Dynasty material. The vessels indicate clear domestic use of the structures. Several large fragments of so-called chamber pots [Fig. 7:1] made of Nile B2 fabric were found. Such pots have a broad carinated body, ring base and one small handle attached to their shoulder (see Aston 1998: 550–551, No. 2241). An interesting yellow residue was observed inside the pot. Its character is unfortunately unknown.

Jars with long slightly flaring necks and simple rims made of sandy Nile B2 fabric [see for example Fig. 7:3] were commonly used as cooking pots (Wodzińska 2011: 1034, Fig. 10.1–3; see also Aston 2007: 52, Fig. 45, Nos 520–529). A large percent of the material consisted of cups and bowls. The most common were cups made of sandy Nile B2, with hemispherical body and pointed bases [Fig. 7:4] (Wodzińska 2011: 134, Fig. 9.1–3, see also Aston 2007: Fig. 43, Nos 446–481). Bowls with

flaring walls, recurved rims and pointed bases made of the common sandy Nile B2 fabric [Fig. 7:5] were also very numerous (Wodzińska 2011: 1034, Fig. 9.4–5; see also Aston 2007, Fig. 41). The Third Intermediate Period layers also contained a number of large basins made of coarser NB2 fabric. These have thickened, slightly recurved rims, deep hemispherical bodies [see Fig. 7:6] and ring bases (Wodzińska 2011: 1034, Fig. 9.7). Many fragments of fire dogs, including one almost complete example [Fig. 7:7] (see Wodzińska 2010: 156, Fig. 4; also Aston 1998: 580–581, No. 2384) came from the Third Intermediate Period houses. The Third Intermediate Period material is usually undecorated, however exceptions occur: primarily pilgrim flasks made of very fine Nile B1 fabric. The flasks were covered with red/brownish slip and were well smoothed. Their bodies were commonly black painted with circular patterns, three to five bands [see Fig. 7:2] (see Aston 2007: 55, Fig. 51, Nos 589–590; Rzepka et al. 2009: 273, Pl.1).

Dr. Anna Wodzińska

Institute of Archaeology, University of Warsaw

00-927 Warsaw, Poland, ul. Krakowskie Przedmieście 26/28

aniawodzinska@yahoo.com

## REFERENCES

- Aston, D. A. (1998). *Die Keramik des Grabungsplatzes Q I.1. Corpus of fabrics, wares and shapes*. Mainz am Rhein: Philipp von Zabern.
- Aston, D. A. (2004). Amphorae in New Kingdom Egypt. *Ägypten und Levante*, 14, 175–213.
- Aston, D. A. (2006). Making a splash. Ceramic decoration in the reigns of Tuthmosis III and Amenophis II. In E. Czerny, I. Hein, H. Hunger, D. Melman, and A. Schwab (Eds.), *Timelines. Studies in honor of Manfred Bietak I* [=OLA 149/1] (pp. 65–74). Leuven: Peeters.
- Aston, D. A. (2007). Pottery of the twelfth to seventh centuries BC. In D. A. Aston and D. G. Jeffreys, *The survey of Memphis III. Excavations at Kom Rabia (site RAT): Post-*

- Ramesside levels and pottery* [=EES Excavation Memoirs 81] (pp. 17–59). London: Egypt Exploration Society.
- Aston, D. A., and Bietak, M. (2012). *Tell el-Dab'a VIII. The classification and chronology of Tell el-Yahudiya ware*. Vienna: Verlag der Österreichischen Akademie der Wissenschaften.
- Bietak, M. (1991). *Tell el-Dab'a V. Ein Friedhofsbezirk der mittleren Bronzezeitkultur mit Totentempel und Siedlungsschichten*. Vienna: Verlag der Österreichischen Akademie der Wissenschaften.
- Bourriau, J. (2010). *The survey of Memphis IV. Kom Rabia: The New Kingdom pottery* [=EES Excavation Memoirs 93]. London: Egypt Exploration Society.
- Dupont, P. (1998). Archaic East Greek trade amphoras. In R. M. Cook and P. Dupont, *East Greek pottery* (pp. 142–192). London: Routledge.
- Forstner-Müller, I. (2008). *Tell el-Dab'a XVI. Die Gräber des Areals A/II von Tell el-Dab'a*. Vienna: Verlag der Österreichischen Akademie der Wissenschaften.
- Hein, I., and Jánosi, P. (2004). *Tell el-Dab'a XI. Areal A/V: Siedlungsrelikte der späten 2. Zwischenzeit*. Vienna: Verlag der Österreichischen Akademie der Wissenschaften.
- Kopetzky, K. (2010). *Tell el-Dab'a XX. Die Chronologie der Siedlungskeramik der Zweiten Zwischenzeit aus Tell el-Dab'a*. Vienna: Verlag der Österreichischen Akademie der Wissenschaften.
- Redmount, C. A. (1989). *On an Egyptian/Asiatic frontier: An archaeological history of the Wadi Tumilat* (unpubl. Ph.D. diss.). University of Chicago.
- Redmount, C. A. (1995). Ethnicity, pottery, and the Hyksos at Tell El-Maskhuta in the Egyptian Delta. *Biblical Archaeologist*, 58(4), 182–190.
- Rzepka, S., Nour el-Din, M., Wodzińska, A., and Jarmużek, Ł. (2014). Egyptian Mission rescue excavations in Tell el-Retaba. Part I: New Kingdom remains. *Ägypten und Levante*, 22–23, 253–287.
- Rzepka, S., Wodzińska, A., Hudec, J., and Herbich, T. (2009). Tell el-Retaba 2007–2008. *Ägypten und Levante*, 19, 241–280.
- Wodzińska, A. (2010). Tell el-Retaba: Ceramic survey, 2007. *PAM*, 19, 152–159.
- Wodzińska, A. (2011). Pottery and chronology. Preliminary remarks on ceramic material from Tell el-Retaba. In D. A. Aston, B. Bader, C. Gallorini, P. T. Nicholson, and S. Buckingham (Eds.), *Under the potter's tree: Studies on ancient Egypt presented to Janine Bourriau on the occasion of her 70th birthday* [=OLA 204] (pp. 1015–1036). Leuven: Peeters.

---

## CONTENTS

---

## CONTENTS

|                       |    |
|-----------------------|----|
| ACKNOWLEDGMENTS ..... | 10 |
| ABBREVIATIONS.....    | 11 |

### PAM REPORTS

|  |    |
|--|----|
| PCMA FIELD MISSIONS AND PROJECTS IN 2012 AND 2013 (WITH MAP) ..... | 17 |
|--|----|

### EGYPT

#### ALEXANDRIA: KOM EL-DIKKA

ALEXANDRIA: EXCAVATIONS AND PRESERVATION WORK ON KOM EL-DIKKA,  
SEASONS 2012 AND 2013

|                                 |    |
|---------------------------------|----|
| <i>Grzegorz Majcherek</i> ..... | 29 |
|---------------------------------|----|

ISLAMIC NECROPOLIS AT KOM EL-DIKKA IN ALEXANDRIA:  
RESEARCH IN THE 2010–2013 SEASONS

|                               |    |
|-------------------------------|----|
| <i>Emanuela Kulicka</i> ..... | 62 |
|-------------------------------|----|

ISLAMIC GLASS FROM AREA U (2012–2013)

|                                |    |
|--------------------------------|----|
| <i>Renata Kucharczyk</i> ..... | 73 |
|--------------------------------|----|

#### MARINA EL-ALAMEIN

RESEARCH AND CONSERVATION IN MARINA EL-ALAMEIN IN THE 2012  
AND 2013 SEASONS. THE POLISH–EGYPTIAN CONSERVATION MISSION

|   |    |
|---|----|
| <i>Rafał Czerner, Grażyna Bąkowska-Czerner, Wiesław Grzegorek</i> ..... | 87 |
|---|----|

SELECTED CONSERVATION WORK IN MARINA EL-ALAMEIN IN THE 2012  
AND 2013 SEASONS

|  |     |
|--|-----|
| <i>Marlena Koczorowska, Wojciech Osiak</i> ..... | 101 |
|--|-----|

RESEARCH AND CONSERVATION IN THE ROMAN BATHS OF MARINA EL-ALAMEIN  
IN THE 2012 AND 2013 SEASONS (POLISH–EGYPTIAN CONSERVATION MISSION)

|  |     |
|--|-----|
| <i>Rafał Czerner, Grażyna Bąkowska-Czerner, Grzegorz Majcherek</i> ..... | 113 |
|--|-----|

#### TELL EL-RETABA

TELL EL-RETABA, SEASON 2012

|   |     |
|---|-----|
| <i>Sławomir Rzepka, Józef Hudec, Łukasz Jarmużek, Lucia Hulková,<br/>Veronika Dubcová</i> ..... | 139 |
|---|-----|

APPENDIX: TELL EL-RETABA 2012. PRELIMINARY REPORT ON ARCHAEOBOTANICAL  
INVESTIGATIONS

|                              |     |
|------------------------------|-----|
| <i>Claire Malleson</i> ..... | 156 |
|------------------------------|-----|

TELL EL-RETABA 2012: THE POTTERY

|                             |     |
|-----------------------------|-----|
| <i>Anna Wodzińska</i> ..... | 164 |
|-----------------------------|-----|

## CONTENTS

---

### TELL EL-FARKHA

TELL EL-FARKHA. EXCAVATIONS, 2012–2013

*Marek Chłodnicki, Krzysztof M. Ciałowicz* ..... 173

### TELL EL-MURRA

TELL EL-MURRA (NORTHEASTERN NILE DELTA SURVEY). SEASONS 2012–2013

*Mariusz A. Jucha, Grzegorz Bąk-Pryc, Natalia Małecka-Drozd* ..... 199

### SAQQARA

SAQQARA: SEASONS 2012 AND 2013/2014

*Karol Mysliwiec* ..... 215

APPENDIX: CONSERVATION WORK IN SAQQARA (2012 AND 2014)

*Zbigniew Godziejewski, Urszula Dąbrowska* ..... 224

SAQQARA 2012: THE POTTERY

*Teodozja I. Rzeuska* ..... 230

### WEST THEBES (ASASIF, DEIR EL-BAHARI) AND VALLEY OF THE NILE

THE TOMBS OF ASASIF: ARCHAEOLOGICAL EXPLORATION  
IN THE 2013/2014 SEASON

*Patryk Chudzik* ..... 239

TEXTILES FROM TOMB II IN DEIR EL-BAHARI: PRELIMINARY REPORT  
FROM SEASON 2012/2013

*Aleksandra Hallmann* ..... 247

DEIR EL-BAHARI. TEMPLE OF TUTHMOSIS III, CAMPAIGNS 2012–2013

*Monika Dolińska* ..... 257

REPORT FROM FIELD RECONNAISSANCE AT GEBELEIN, KHOZAM AND EL-RIZEIQAT

*Wojciech Ejsmond, Julia M. Chyla, Cezary Baka* ..... 265

### DAKHLEH OASIS

DAKHLEH OASIS PROJECT, PETROGLYPH UNIT: SEASONS 2012 AND 2013

*Ewa Kuciewicz, Paweł Polkowski, Michał Kobusiewicz* ..... 275

### BERENIKE

BERENIKE PROJECT. HELLENISTIC FORT, ROMAN HARBOR, LATE ROMAN TEMPLE, AND  
OTHER FIELDWORK: ARCHAEOLOGICAL WORK IN THE 2012 AND 2013 SEASONS

*Steven E. Sidebotham, Iwona Zych, Joanna K. Rądkowska, Marek Woźniak* ..... 297

### SUDAN

#### DONGOLA

DONGOLA. SEASONS IN 2012–2013

*Włodzimierz Godlewski* ..... 325

APPENDIX: THE SKELETAL REMAINS FROM THE SANCTUARY OF ANNA  
IN THE MONASTERY ON KOM H

*Robert Mahler* ..... 340



---

## CONTENTS

---

|   |     |
|---|-----|
| WALL INSCRIPTIONS IN THE SOUTHWEST ANNEX TO THE MONASTERY ON KOM H<br>AT DONGOLA: REPORT ON WORK IN THE 2013 SEASON<br><i>Adam Łajtar</i> .....   | 344 |
| CRYPT 3 IN THE NORTHWEST ANNEX OF THE MONASTERY ON KOM H IN DONGOLA:<br>REPORT ON THE EXPLORATION IN 2012<br><i>Robert Mahler, Włodzimierz Godlewski, Katarzyna Danys-Lasek, Barbara Czaja</i> ....   | 352 |
| BANGANARTI AND SELIB  |     |
| BANGANARTI AND SELIB IN 2011/2012 AND 2013<br><i>Bogdan Żurawski</i> .....  | 369 |
| EXCAVATIONS AT SELIB 2 IN 2012<br><i>Roksana Hajduga, Katarzyna Solarska</i> .....  | 389 |
| SELIB 1. PRELIMINARY REPORT FOR THE 2012 AND 2013 SEASONS<br><i>Aneta Cedro</i> .....   | 397 |
| FAUNAL REMAINS FROM THE FORTIFIED SETTLEMENT AROUND<br>THE CHURCH AT BANGANARTI IN SUDAN<br><i>Marta Osypińska</i> .....  | 411 |
| EARLY MAKURIA (MTOM) PROJECT  |     |
| ANIMAL REMAINS FROM THE EARLY MAKURIAN CEMETERY IN EL-ZUMA<br>(SEASON 2013)<br><i>Urszula Iwaszczuk</i> .....   | 425 |
| GHAZALI   |     |
| GHAZALI 2012: PRELIMINARY REPORT<br><i>Artur Obłuski, Grzegorz Ochala, Miron Bogacki, Wiesław Małkowski,<br/>Szymon Maślak, Zaki ed-Din Mahmoud</i> .....   | 431 |
| CYPRUS  |     |
| NEA PAPHOS  |     |
| NEA PAPHOS. SEASONS 2012 AND 2013<br><i>Henryk Meyza</i> .....  | 443 |
| LEBANON   |     |
| JIYEH   |     |
| PRELIMINARY REPORT ON THE 2012 AND 2013 EXCAVATION SEASONS AT JIYEH<br>(PORPHYREON): WORK IN SECTOR D (RESIDENTIAL QUARTER)<br><i>Tomasz Waliszewski, Magdalena Antos, Piotr Jaworski, Piotr Makowski,<br/>Marcin Romaniuk, Rafał Solecki, Agnieszka Szymczak</i> ..... | 453 |
| PRELIMINARY RESULTS OF A STRATIGRAPHIC ANALYSIS OF LATE ROMAN AND<br>EARLY BYZANTINE ARCHITECTURE IN THE RESIDENTIAL QUARTER OF JIYEH<br><i>Michał Dzik</i> .....   | 475 |

## CONTENTS

---

|   |     |
|---|-----|
| RESULTS OF A SURVEY CONDUCTED IN THE AREA OF THE JIYEH MARINA RESORT<br>HOTEL COMPLEX IN THE 2012 SEASON<br><i>Zofia Kowarska, Szymon Lenarczyk</i> ..... | 491 |
|---|-----|

### KUWAIT

#### AL-SUBIYAH AND FAILAKA ISLAND

|  |     |
|--|-----|
| TUMULUS BURIAL FIELD ON THE NORTH COAST OF KUWAIT BAY.<br>PRELIMINARY EXCAVATION REPORT ON THE SPRING SEASON IN 2012<br><i>Łukasz Rutkowski</i> .....                          | 505 |
| CHRISTIAN SETTLEMENT AT FAILAKA, QUSUR SITE (KUWAIT):<br>EXCAVATIONS IN 2011 AND 2013<br><i>Magdalena Żurek</i> .....  | 529 |
| PRELIMINARY REPORT ON THE ARCHAEOLOGICAL SURVEY OF THE JOINT<br>KUWAITI–POLISH MISSION, FAILAKA ISLAND, 2012<br><i>Franciszek Pawlicki</i> .....                               | 547 |
| FAILAKA ARCHAEOLOGICAL RESEARCH PROJECT. PRELIMINARY RESULTS AFTER<br>THE FIRST SEASON OF EXCAVATION AT THE KHARAIB EL-DESHT SITE IN 2013<br><i>Agnieszka Pieńkowska</i> ..... | 560 |
| APPENDIX 1: KHARAIB EL-DESHT 2013: POTTERY. PRELIMINARY REPORT<br><i>Marta Mierzejewska</i> .....  | 571 |
| APPENDIX 2: SURVEY OF KHARAIB EL-DESHT BAY ON FAILAKA ISLAND:<br>PRELIMINARY REPORT<br><i>Magdalena Nowakowska</i> .....   | 579 |

### IRAQI KURDISTAN

|   |     |
|---|-----|
| NEWCOMERS AND AUTOCHTHONS. PRELIMINARY REPORT ON 2013 ACTIVITIES<br>IN THE KURDISTAN AUTONOMOUS REGION, IRAQ<br><i>Dorota Ławecka</i> ..... | 591 |
|---|-----|

### PAM STUDIES

|  |     |
|--|-----|
| LEVALLOIS TRADITION EPIGONES IN THE MIDDLE NILE VALLEY:<br>SURVEY IN THE AFFAD BASIN<br><i>Marta Osypińska, Piotr Osypiński</i> .....  | 601 |
| ZOOMORPHIC CLAY FIGURINES FROM TELL ARBID. PRELIMINARY REPORT<br><i>Maciej Makowski</i> .....  | 627 |
| PLANT MACROFOSSILS FROM THE SITE OF TELL ARBID, NORTHEAST SYRIA<br>(3RD–2ND MILLENNIUM BC). PRELIMINARY REPORT<br><i>Aldona Mueller-Bieniek, Krystyna Wasylkowa, Anna Smogorzewska</i> ..... | 657 |
| THE ANIMAL ECONOMY OF PEOPLE LIVING IN THE SETTLEMENT<br>OF TELL RAD SHAQRAH (SYRIA)<br><i>Joanna Piątkowska-Matecka, Rafał Koliński</i> .....   | 675 |

---

## CONTENTS

---

|   |     |
|---|-----|
| THE SOLAR ALTAR IN THE TEMPLE OF HATSHEPSUT AT DEIR EL-BAHARI:<br>ARCHITECTURE AND IDEOLOGY<br><i>Andrzej Ćwiek</i> .....                                     | 693 |
| FAIENCE OBJECTS FROM THE TOMB MMA 1152 AT SHEIKH ABD EL-GURNA<br><i>Patryk Chudzik, Andrzej Ćwiek</i> .....   | 701 |
| INDIAN STEEL: A FORGOTTEN COMMODITY OF THE GREAT TRADE ROUTES<br><i>Marek Woźniak</i> .....   | 709 |
| MONETIZATION OF ROMAN EGYPT DURING THE FLAVIAN DYNASTY (AD 69–96):<br>THE CASE OF ALEXANDRIA AND BERENIKE<br><i>Katarzyna Lach</i> .....                      | 727 |
| CROSS-CULTURAL BEAD ENCOUNTERS AT THE RED SEA PORT SITE OF BERENIKE,<br>EGYPT. PRELIMINARY ASSESSMENT (SEASONS 2009–2012)<br><i>Joanna Then-Obluska</i> ..... | 735 |
| A NEW LOOK ON SOME OLD GLASS FINDS FROM PALMYRA<br><i>Krystyna Gawlikowska</i> .....  | 779 |
| NEW INSIGHTS INTO NUBIAN ARCHERY<br><i>Łukasz Zieliński</i> .....   | 791 |
| INDEX OF SITES .....  | 803 |
| GUIDELINES FOR AUTHORS .....  | 804 |
| PCMA PUBLICATIONS .....   | 805 |

*POLISH ARCHAEOLOGY IN THE MEDITERRANEAN (PAM)*  
*Annual of the Polish Centre of Mediterranean Archaeology, University of Warsaw*

PAM Editor-in-chief: Iwona Zych

Volume 24/1: Research

All texts peer-reviewed.

<http://www.pcma.uw.edu.pl/en/pam-journal/pam-independent-reviewers/>

Press-reviewing process: Urszula Wicenciak

Bibliographic editor: Aleksandra Zych

Language consultation: Iwona Zych

Technical editor: Iwona Zych

Digital processing: Ewa Czyżewska-Zalewska

Image processing and copyediting assistance: Ewa Czyżewska-Zalewska, Szymon Maślak, Marta Momot, Marek PuszkarSKI, Urszula Wicenciak

Original graphic design: Jerzy Kowalski, updated by Ewa Czyżewska-Zalewska for PCMA

DTP: Ewa Czyżewska-Zalewska, assisted by Agnieszka Dzwonek

Cover: Tumulus SB 100 from the Al-Subiyah region of Kuwait during exploration  
(Photo M. Makowski)

**ISSN 1234–5415 (Print), ISSN 2083–537X (Online)**

© Polish Centre of Mediterranean Archaeology, University of Warsaw, Warszawa 2015

© Wydawnictwa Uniwersytetu Warszawskiego, Warszawa 2015

All rights reserved. No part of this publication may be reproduced or transmitted in any form or by any means, electronic or mechanical, including photocopying, recording, or any information storage and retrieval system, without permission in writing from the Polish Centre of Mediterranean Archaeology of the University of Warsaw.

Polish Centre of Mediterranean Archaeology, University of Warsaw

00-497 Warszawa, Poland, ul. Nowy Świat 4

e-mail: [pam.pcma@uw.edu.pl](mailto:pam.pcma@uw.edu.pl)

[www.pcma.uw.edu.pl](http://www.pcma.uw.edu.pl)

Orders can be placed c/o Agnieszka Pieńkowska

[a.pienkowska@uw.edu.pl](mailto:a.pienkowska@uw.edu.pl)

University of Warsaw Press

00-497 Warszawa, Poland, ul. Nowy Świat 4

[www.wuw.pl](http://www.wuw.pl); e-mail: [wuw@uw.edu.pl](mailto:wuw@uw.edu.pl)

Internet Bookshop: [www.wuw.pl/ksiegarnia](http://www.wuw.pl/ksiegarnia)

*Printed in Poland*



## POLISH ARCHAEOLOGY IN THE MEDITERRANEAN

Published annually since 1990



PAM XXIV/1 *Research*

### REPORTS

Fieldwork projects carried out by PCMA teams in the Ancient Near East and Africa

- scope: archaeological, geophysical, restoration and study work
- areas of interest: Egypt, Sudan, Cyprus, Syria, Lebanon, Kuwait, Iraq
- timespan: ten millennia from prehistory and protohistory through the medieval period

### STUDIES

- archaeological, architectural and material research within the fields of study covered by PCMA fieldwork

PAM XXIV/2 *Special Studies*

*Deir el-Bahari Studies*

Editor Zbigniew E. Szafrński

Volume dedicated to research on specific egyptological and archaeological themes resulting from the ongoing work of the Polish conservation and restoration project in the Temple of Queen Hatshepsut in Deir el-Bahari (West Thebes, Luxor, Egypt). The 11 contributions included in this book concern mostly a later phase in the occupation of the complex, in the Third Intermediate Period (11th–8th century BC), when the abandoned temple was reused as a burial ground. A few of the articles refer to the original architectural form and decoration of the temple from the times of Hatshepsut (15th century BC). Also included is an article on tombs of three other queens of the Eighteenth Dynasty in the Valley of the Kings.

Available as full texts on-line at [www.pcma.uw.edu.pl](http://www.pcma.uw.edu.pl)

PAM volumes 17 to the present available on-line from [www.ceeol.com](http://www.ceeol.com)

Information and orders:

[www.pcma.uw.edu.pl](http://www.pcma.uw.edu.pl)

[pcma@uw.edu.pl](mailto:pcma@uw.edu.pl)

[pam.pcma@uw.edu.pl](mailto:pam.pcma@uw.edu.pl)

[www.wuw.pl/ksiegarnia](http://www.wuw.pl/ksiegarnia)

RESEARCH

PAM XXIV/1

POLISH CENTRE OF MEDITERRANEAN ARCHAEOLOGY  
UNIVERSITY OF WARSAW

# POLISH ARCHAEOLOGY IN THE MEDITERRANEAN

## XXIV/1

RESEARCH

