



UNIVERSITY
OF WARSAW | Polish Centre of
Mediterranean Archaeology



Title: **Deir el-Bahari – Temple of Tuthmosis III, campaigns 2012–2013.**

Author(s) : **Monika Dolińska**

Journal: *Polish Archaeology in the Mediterranean* 24/1 (Research)

Year: 2015

Pages: 257 - 264

ISSN 1234–5415 (Print), ISSN 2083–537X (Online)

Publisher: Polish Centre of Mediterranean Archaeology, University of Warsaw (PCMA UW),
Wydawnictwa Uniwersytetu Warszawskiego (WUW)

www.pcma.uw.edu.pl www.wuw.edu.pl

Abstract: In 2012 and 2013 the mission continued research and documentation work, concentrating on scenes located in the Hypostyle Hall, the Bark Room, and rooms D, G and H. Dozens of painted stone fragments were cleaned and protected. Photoscanning techniques were used to improve detailed rendering of the temple. New photomontages were produced and subsequent walls were drawn, joining previously separate scenes.

Keywords: Tuthmosis III, Deir el-Bahari, temple decoration, temple architecture, photomontage, reconstruction

الدير البحري - معبد تحتمس الثالث / حملات 2012 / 2013 .
Monika Dolińska

الملخص : في 2012 و 2013 إستمرت البعثة في البحث والتوثيق مركزة عملها على مناظر تقع في قاعة الأعمدة وغرفة مظلمة والغرف (H,G,D) والعشرات من قطع الحجر الملونة تم تنظيفها وحفظها . وقد إستخدمت تقنيات التصوير الضوئي لتحسين تفاصيل المعبد وأنتجت الصور الجديدة ووضعت الجدران اللاحقة وفيما بعد أعيد جمع المشاهد المنفصلة .

POLISH ARCHAEOLOGY IN THE MEDITERRANEAN (PAM)
Annual of the Polish Centre of Mediterranean Archaeology, University of Warsaw

Editorial Board

Piotr Bieliński
Krzysztof M. Ciałowicz
Wiktor Andrzej Daszewski
Michał Gawlikowski
Włodzimierz Godlewski
Karol Myśliwiec
Tomasz Waliszewski

International Advisory Board

Jean Charles Balty
Charles Bonnet
Giorgio Buccellati
Stan Hendrickx
Johanna Hlaubek

Peer-reviewed by members of the *PAM* committee of independent reviewers.
<http://www.pcma.uw.edu.pl/en/pam-journal/pam-independent-reviewers/>

POLISH CENTRE OF MEDITERRANEAN ARCHAEOLOGY
UNIVERSITY OF WARSAW

POLISH ARCHAEOLOGY IN THE MEDITERRANEAN

XXIV/1

RESEARCH



ABBREVIATIONS

<i>AA</i>	<i>Archäologischer Anzeiger; Jahrbuch des Deutschen Archäologischen Instituts</i> (Berlin)
<i>ANM</i>	<i>Archéologie du Nil Moyen</i> (Lille)
<i>ASAE</i>	<i>Annales du Service des Antiquités de l'Égypte</i> (Cairo)
<i>AV</i>	<i>Archäologische Veröffentlichungen, Deutsches Archäologisches Institut, Abteilung Kairo</i> (Berlin–Mainz am Rhein)
<i>BAAL</i>	<i>Bulletin d'archéologie et d'architecture libanaises</i> (Beirut)
<i>BAH</i>	<i>Bibliothèque archéologique et historique</i> (Paris)
<i>BAR IS</i>	<i>British Archaeology Reports International Series</i> (Oxford)
<i>BASOR</i>	<i>Bulletin of the American Schools of Oriental Research</i> (Ann Arbor, MI)
<i>BCH</i>	<i>Bulletin de correspondance hellénique</i> (Paris)
<i>BdE</i>	<i>Bibliothèque d'étude</i> (Cairo)
<i>BIFAO</i>	<i>Bulletin de l'Institut français d'archéologie orientale</i> (Cairo)
<i>BSAA</i>	<i>Bulletin de la Société d'archéologie d'Alexandrie</i> (Cairo)
<i>BSFE</i>	<i>Bulletin de la Société française d'égyptologie</i> (Paris)
<i>CCE</i>	<i>Cahiers de la céramique égyptienne</i> (Cairo)
<i>EtTrav</i>	<i>Études et travaux. Travaux du Centre d'archéologie méditerranéenne de l'Académie des sciences polonaise</i> (Warsaw)
<i>FIFAO</i>	<i>Fouilles de l'Institut français d'archéologie orientale</i> (Cairo)
<i>GAMAR</i>	<i>Gdańsk Archaeological Museum African Reports</i> (Gdańsk)
<i>GM</i>	<i>Göttinger Miszellen</i> (Göttingen)
<i>IAMS</i>	<i>Institute of Archaeo-Metallurgical Studies</i> (London)
<i>JARCE</i>	<i>Journal of the American Research Center in Egypt</i> (Boston–Princeton–New York–Cairo)
<i>JEA</i>	<i>Journal of Egyptian Archaeology</i> (London)
<i>JGS</i>	<i>Journal of Glass Studies</i> (Corning, NY)
<i>JJP</i>	<i>Journal of Juristic Papyrology</i> (Warsaw)
<i>JRS</i>	<i>Journal of Roman Studies</i> (London)
<i>MDAIK</i>	<i>Mitteilungen des Deutschen Archäologischen Instituts, Abteilung Kairo</i> (Wiesbaden)
<i>OIP</i>	<i>Oriental Institute Publications</i> (Chicago)
<i>OLA</i>	<i>Orientalia lovaniensia analecta</i> (Louvain)
<i>PAM</i>	<i>Polish Archaeology in the Mediterranean</i> (Warsaw)
<i>PSAS</i>	<i>Proceedings of the Seminar for Arabian Studies</i> (London)
<i>SAAC</i>	<i>Studies in Ancient Art and Civilisation</i> (Kraków)
<i>SAK</i>	<i>Studien zur altägyptischen Kultur</i> (Hamburg)
<i>SAOC</i>	<i>Studies in Ancient Oriental Civilization</i> (Chicago)
<i>WVDOG</i>	<i>Wissenschaftliche Veröffentlichungen der deutschen Orient-Gesellschaft</i> (Berlin–Leipzig)

DEIR EL-BAHARI TEMPLE OF TUTHMOSIS III, CAMPAIGNS 2012–2013

Monika Dolińska

National Museum in Warsaw

Abstract: In 2012 and 2013 the mission continued research and documentation work, concentrating on scenes located in the Hypostyle Hall, the Bark Room, and rooms D, G and H. Dozens of painted stone fragments were cleaned and protected. Photoscanning techniques were used to improve detailed rendering of the temple. New photomontages were produced and subsequent walls were drawn, joining previously separate scenes.

Keywords: Tuthmosis III, Deir el-Bahari, temple decoration, temple architecture, photomontage, reconstruction

The two seasons, in 2012 and 2013, lasted altogether a little over two months and were conditioned largely by the general situation in Egypt, which resulted in a number of logistical and personnel issues. The reconstruction of the last two blocks in the wall with the niche, decorated on both sides could not be completed as a result. Otherwise the East Wall of the sanctuary would have been made ready for exhibition.

Lacking two conservators to handle blocks, the one restorer present, a specialist in painting restoration, concentrated on securing the polychrome layer on endangered and/or especially valuable fragments [*Fig. 1*]. The painted surface of blocks is constantly abraded by sand particles present in the current, less than perfect storage conditions, causing a fa-

ding of the original intensity of colors. Fragments that had suffered in the catastrophic rainstorm of 1994 were also in need of attention, having salt efflorescence come heavily to the surface. Although restoring the original condition is usually not possible, consolidation of the stone and paint layer is of utmost necessity. In 2013 the most endangered stone surfaces were protected, many more were cleaned and hardened, and storage conditions were improved (special shelves and linen covers) to prevent further deterioration.

ARCHITECTURAL STUDIES

Long years of research have still not addressed all the problems related to the architecture of the temple. Progress has been made in some areas thanks to a metho-

dical examination of architectural elements by a specialist, architect Mariusz Caban. Included in the study were architrave fragments, Hathor capitals, remains of the ramp and adjoining structures, as well as loose blocks left near the Hathor chapel.

Foremost, the arrangement of the lower porticoes and the length of the ramp was found to be different than previously assumed. The ramp must have been longer and consequently the lower porticoes had to be shifted slightly to the east. Adjoining



Fig. 1. Fragment of a royal feather dress, before (left) and after cleaning (Photos M. Szewczyk, M. Dolińska)

Team

Dates of work: 11 October–12 December 2012; 7 November–8 December 2013

Director: Dr. Monika Dolińska (National Museum in Warsaw; 2012, 2013)

MSA representatives: Nafesa El Azab Mohamed Ahmed (2012), Mohamed Ahmed Husein Abu Gad (2013)

Egyptologists: Janina Wiercińska (National Museum in Warsaw; 2012, 2013), Piotr Czerkwiński (PhD candidate, Institute of Archaeology, University of Warsaw; 2012), Filip Taterka (student, Adam Mickiewicz University, Poznań; 2012)

Photographer: Zbigniew Doliński (National Museum in Warsaw; 2012, 2013)

Documentalist: Marek Puzkarski (PCMA UW; 2012)

Architect: Mariusz Caban (PhD candidate, Wrocław University of Technology; 2012, 2013)

Conservator: Magdalena Szewczyk (freelance; 2013)

Acknowledgments

The Tuthmosis III project is financed jointly by the Polish Centre of Mediterranean Archaeology and the National Science Centre. We would like also to express our thanks to the administration of the National Museum in Warsaw for help and support of the fieldwork in Egypt, as well as to the inspectors representing the Egyptian authorities, whose helpful cooperation was inestimable.

structures, previously interpreted as a sort of kiosk or annex, now are seen as belonging to the portico structure. The proposed arrangement has found illustration in a new 3D model of the temple [Fig. 2 bottom].

Room F appears to have contained a staircase leading to the roof. The idea has been put forward based on a similar

arrangement in the Medinet Habu temple, for example, and a staircase has been added to the temple plan [Fig. 2 top].

A block with oblique opening that was discovered in 2011 is a new element as well, believed to be part of the roof. It is enticing, although less probable, to see in it a wall block with small window letting daylight stream in and fall upon the cult

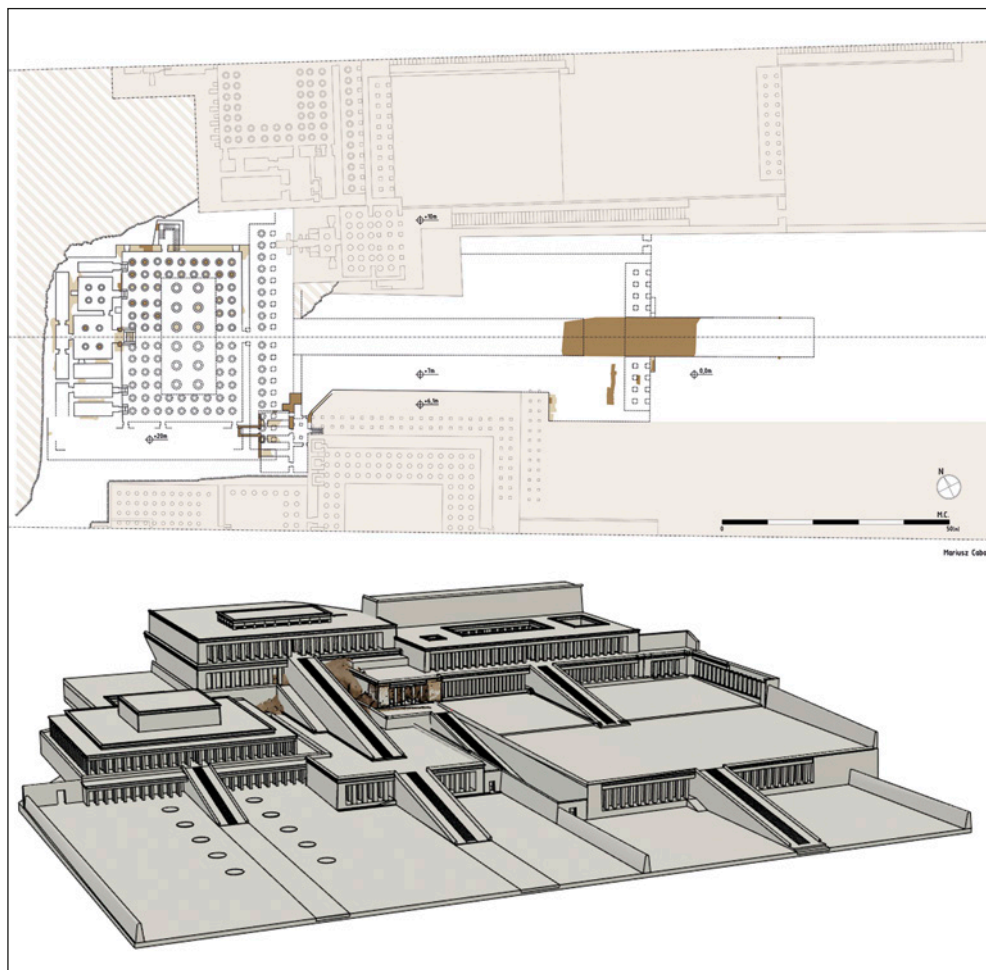


Fig. 2. Temple of Tuthmosis III in Deir el-Bahari: top, new plan following architectural reexamination; bottom, 3D computer model (Drawing and modelling M. Caban)

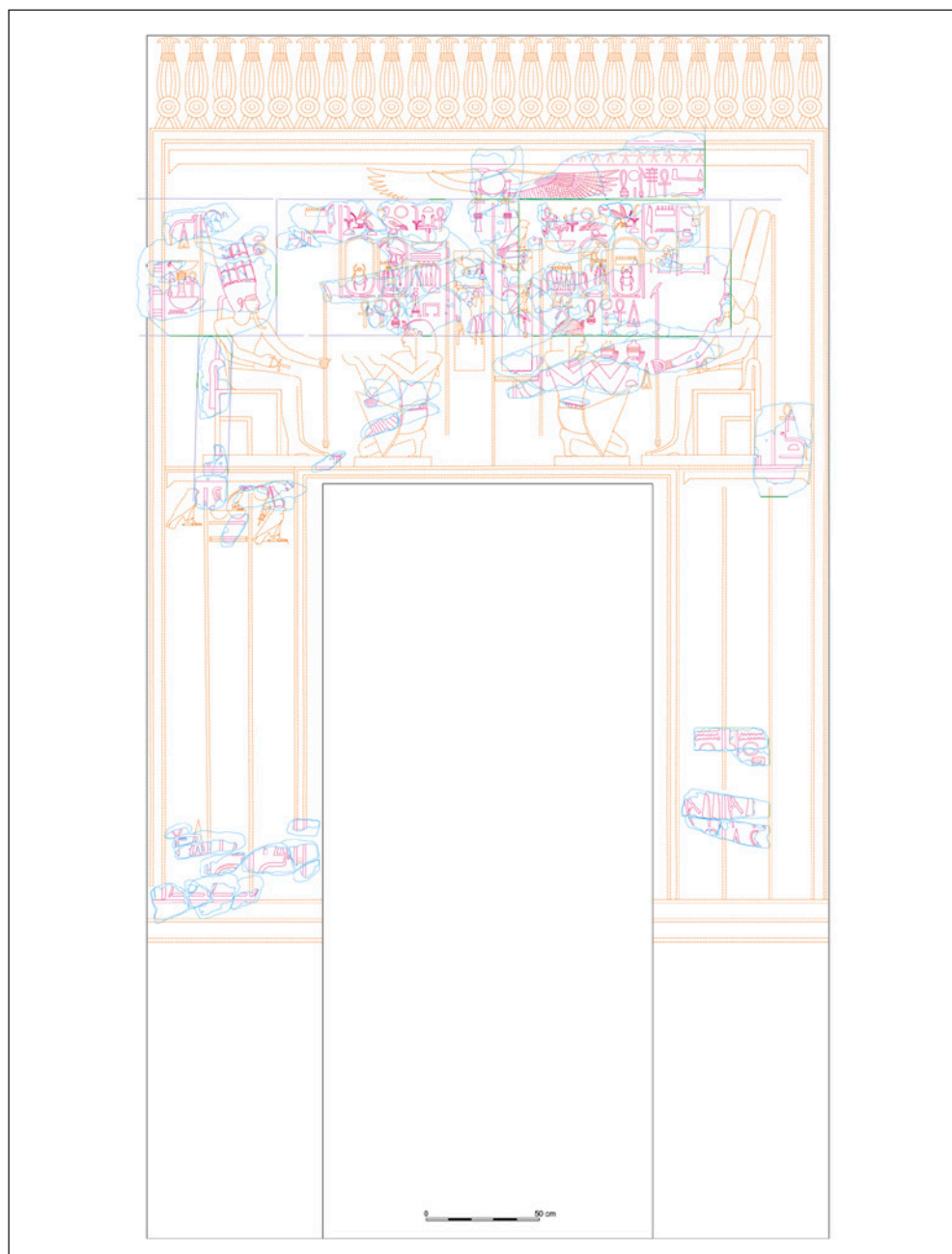


Fig. 3. Drawing documentation of the East Wall in Room H
(Drawing M. Puskarski)



Fig. 4. Reconstruction of a Hathor capital
(Photoscanning and drawing M. Caban)

statue, as in the neighboring temple of Hatshepsut.

Photoscanning techniques were applied to restore the Hathor capital based on just a few preserved fragments [Fig. 4]. The naos of the capital turned out to have only one uraeus, instead of the two seen in the neighboring Hatshepsut temple. It is likely that only two pilasters with Hathor capitals existed, completed perhaps by two columns.

DOCUMENTATION TASKS

Documentation of scenes has progressed, with all the reconstructed and localized scenes being drawn in Corel or Illustrator software. Still to be accomplished is the drawing of new fragments added to scenes, reconstruction of whole walls from separate scenes, drawing of fragmentarily preserved scenes that have yet to be localized. New drawings made in 2012 and 2013 include the West Wall of the Bark Room, the East Wall of room H [Fig. 3], the West and East Walls of room D, scenes between doors on the West Wall of the Hypostyle Hall.

The preparation of a corpus of photographic documentation has also progressed methodically, especially with regard to fragments of scenes to be used in photomontages as well as joining pieces not photographed previously [Fig. 5]. Some complete blocks stored in the rear chamber of the storeroom will have to be rephotographed in the future once proper access has been ensured.

Several new photomontages were assembled, including the left wall of the niche in room D [Fig. 7], a figure of the king seated on a throne in a royal bark from the East Wall of the Hypostyle Hall and a part of the South Wall in room D with

the royal titles [Fig. 8]. The photomontage of a figure of the king with royal *ka* from the same scene is in preparation.

EGYPTOLOGICAL RESEARCH

The publication of the temple is intended in parts, dedicated to the different parts of the temple. The most advanced is the study of rooms D, G and H connected with the royal cult (Part I by Monika Dolińska). The complex history of the temple exemplified by changes in the architecture of the Hypostyle Hall will be analyzed in a separate section (Part II by Janina Wiercińska). Subsequent parts will deal with the Bark Room, Offering Table Room, Sanctuary, Ritual Vessels Chamber



Fig. 5. Joining fragments with royal titles from room G, South Wall (Photo and photomontage Z. Doliński)

and the remaining fragmentarily preserved rooms. Wiercińska recently identified new evidence concerning the widening of the door between the Hypostyle Hall and the Bark Room — fragments of cut away doorjambs with royal titles [Fig. 6]. Some very fragmentary scenes in the Offering Table Room were also newly located.

SMALL FINDS INVENTORY

The inventory of small finds, encompassing fragments of statuary, stelae, coffins, shabtis, tools etc., has been continued, both in the mission storeroom and in the central Carter Store, where some of the most interesting fragments and complete statues had been taken. Some of the finds had been published by Jadwiga Lipińska, but a substantial number still needs to be studied (task charged to Piotr Czerkwiński, epigraphic studies conducted by Filip Taterka).



Fig. 6. Fragment cut-away from the entrance to the Bark Room, with the unerased name of Amun (Photo Z. Doliński)



*Fig. 7. Reconstruction of the left wall of the niche
(Photo and photomontage Z. Doliński)*

STORAGE

Fragments in the open-air lapidaries and in the temple area continued to be relocated (in 2012), taking care to ensure that painted architraves would not be damaged by increasingly frequent rains

and potential harm from the operation of the Cliff Mission right above the temple. The procedure adopted by the project is to build brick-and-wooden benches under the fragments of architraves and to cover them with canvas sheets.



*Fig. 8. Royal titles in room D, South Wall
(Photo and photomontage Z. Doliński)*

Dr. Monika Dolińska
Department of Ancient Art, National Museum in Warsaw
00-495 Warsaw, Poland, Al. Jerozolimskie 3
mdolinska@mnw.art.pl

CONTENTS

CONTENTS

ACKNOWLEDGMENTS	10
ABBREVIATIONS.....	11

PAM REPORTS

PCMA FIELD MISSIONS AND PROJECTS IN 2012 AND 2013 (WITH MAP)	17
--	----

EGYPT

ALEXANDRIA: KOM EL-DIKKA

ALEXANDRIA: EXCAVATIONS AND PRESERVATION WORK ON KOM EL-DIKKA,
SEASONS 2012 AND 2013

<i>Grzegorz Majcherek</i>	29
---------------------------------	----

ISLAMIC NECROPOLIS AT KOM EL-DIKKA IN ALEXANDRIA:
RESEARCH IN THE 2010–2013 SEASONS

<i>Emanuela Kulicka</i>	62
-------------------------------	----

ISLAMIC GLASS FROM AREA U (2012–2013)

<i>Renata Kucharczyk</i>	73
--------------------------------	----

MARINA EL-ALAMEIN

RESEARCH AND CONSERVATION IN MARINA EL-ALAMEIN IN THE 2012
AND 2013 SEASONS. THE POLISH–EGYPTIAN CONSERVATION MISSION

<i>Rafał Czerner, Grażyna Bąkowska-Czerner, Wiesław Grzegorek</i>	87
---	----

SELECTED CONSERVATION WORK IN MARINA EL-ALAMEIN IN THE 2012
AND 2013 SEASONS

<i>Marlena Koczorowska, Wojciech Osiak</i>	101
--	-----

RESEARCH AND CONSERVATION IN THE ROMAN BATHS OF MARINA EL-ALAMEIN
IN THE 2012 AND 2013 SEASONS (POLISH–EGYPTIAN CONSERVATION MISSION)

<i>Rafał Czerner, Grażyna Bąkowska-Czerner, Grzegorz Majcherek</i>	113
--	-----

TELL EL-RETABA

TELL EL-RETABA, SEASON 2012

<i>Sławomir Rzepka, Józef Hudec, Łukasz Jarmużek, Lucia Hulková, Veronika Dubcová</i>	139
---	-----

APPENDIX: TELL EL-RETABA 2012. PRELIMINARY REPORT ON ARCHAEOBOTANICAL
INVESTIGATIONS

<i>Claire Malleson</i>	156
------------------------------	-----

TELL EL-RETABA 2012: THE POTTERY

<i>Anna Wodzińska</i>	164
-----------------------------	-----

CONTENTS

TELL EL-FARKHA

TELL EL-FARKHA. EXCAVATIONS, 2012–2013

Marek Chłodnicki, Krzysztof M. Ciałowicz 173

TELL EL-MURRA

TELL EL-MURRA (NORTHEASTERN NILE DELTA SURVEY). SEASONS 2012–2013

Mariusz A. Jucha, Grzegorz Bąk-Pryc, Natalia Małecką-Drozd 199

SAQQARA

SAQQARA: SEASONS 2012 AND 2013/2014

Karol Mysliwiec 215

APPENDIX: CONSERVATION WORK IN SAQQARA (2012 AND 2014)

Zbigniew Godziejewski, Urszula Dąbrowska 224

SAQQARA 2012: THE POTTERY

Teodozja I. Rzeuska 230

WEST THEBES (ASASIF, DEIR EL-BAHARI) AND VALLEY OF THE NILE

THE TOMBS OF ASASIF: ARCHAEOLOGICAL EXPLORATION
IN THE 2013/2014 SEASON

Patryk Chudzik 239

TEXTILES FROM TOMB II IN DEIR EL-BAHARI: PRELIMINARY REPORT
FROM SEASON 2012/2013

Aleksandra Hallmann 247

DEIR EL-BAHARI. TEMPLE OF TUTHMOSIS III, CAMPAIGNS 2012–2013

Monika Dolińska 257

REPORT FROM FIELD RECONNAISSANCE AT GEBELEIN, KHOZAM AND EL-RIZEIQAT

Wojciech Ejsmond, Julia M. Chyla, Cezary Baka 265

DAKHLEH OASIS

DAKHLEH OASIS PROJECT, PETROGLYPH UNIT: SEASONS 2012 AND 2013

Ewa Kuciewicz, Paweł Polkowski, Michał Kobusiewicz 275

BERENIKE

BERENIKE PROJECT. HELLENISTIC FORT, ROMAN HARBOR, LATE ROMAN TEMPLE, AND
OTHER FIELDWORK: ARCHAEOLOGICAL WORK IN THE 2012 AND 2013 SEASONS

Steven E. Sidebotham, Iwona Zych, Joanna K. Rądkowska, Marek Woźniak 297

SUDAN

DONGOLA

DONGOLA. SEASONS IN 2012–2013

Włodzimierz Godlewski 325

APPENDIX: THE SKELETAL REMAINS FROM THE SANCTUARY OF ANNA
IN THE MONASTERY ON KOM H

Robert Mahler 340

CONTENTS

WALL INSCRIPTIONS IN THE SOUTHWEST ANNEX TO THE MONASTERY ON KOM H AT DONGOLA: REPORT ON WORK IN THE 2013 SEASON <i>Adam Łajtar</i>	344
CRYPT 3 IN THE NORTHWEST ANNEX OF THE MONASTERY ON KOM H IN DONGOLA: REPORT ON THE EXPLORATION IN 2012 <i>Robert Mahler, Włodzimierz Godlewski, Katarzyna Danys-Lasek, Barbara Czaja</i>	352
BANGANARTI AND SELIB	
BANGANARTI AND SELIB IN 2011/2012 AND 2013 <i>Bogdan Żurawski</i>	369
EXCAVATIONS AT SELIB 2 IN 2012 <i>Roksana Hajduga, Katarzyna Solarska</i>	389
SELIB 1. PRELIMINARY REPORT FOR THE 2012 AND 2013 SEASONS <i>Aneta Cedro</i>	397
FAUNAL REMAINS FROM THE FORTIFIED SETTLEMENT AROUND THE CHURCH AT BANGANARTI IN SUDAN <i>Marta Osypińska</i>	411
EARLY MAKURIA (MTOM) PROJECT	
ANIMAL REMAINS FROM THE EARLY MAKURIAN CEMETERY IN EL-ZUMA (SEASON 2013) <i>Urszula Iwaszczuk</i>	425
GHAZALI	
GHAZALI 2012: PRELIMINARY REPORT <i>Artur Obłuski, Grzegorz Ochala, Miron Bogacki, Wiesław Małkowski, Szymon Maślak, Zaki ed-Din Mahmoud</i>	431
CYPRUS	
NEA PAPHOS	
NEA PAPHOS. SEASONS 2012 AND 2013 <i>Henryk Meyza</i>	443
LEBANON	
JIYEH	
PRELIMINARY REPORT ON THE 2012 AND 2013 EXCAVATION SEASONS AT JIYEH (PORPHYREON): WORK IN SECTOR D (RESIDENTIAL QUARTER) <i>Tomasz Waliszewski, Magdalena Antos, Piotr Jaworski, Piotr Makowski, Marcin Romaniuk, Rafał Solecki, Agnieszka Szymczak</i>	453
PRELIMINARY RESULTS OF A STRATIGRAPHIC ANALYSIS OF LATE ROMAN AND EARLY BYZANTINE ARCHITECTURE IN THE RESIDENTIAL QUARTER OF JIYEH <i>Michał Dzik</i>	475

CONTENTS

RESULTS OF A SURVEY CONDUCTED IN THE AREA OF THE JIYEH MARINA RESORT HOTEL COMPLEX IN THE 2012 SEASON <i>Zofia Kowarska, Szymon Lenarczyk</i>	491
---	-----

KUWAIT

AL-SUBIYAH AND FAILAKA ISLAND

TUMULUS BURIAL FIELD ON THE NORTH COAST OF KUWAIT BAY. PRELIMINARY EXCAVATION REPORT ON THE SPRING SEASON IN 2012 <i>Łukasz Rutkowski</i>	505
CHRISTIAN SETTLEMENT AT FAILAKA, QUSUR SITE (KUWAIT): EXCAVATIONS IN 2011 AND 2013 <i>Magdalena Żurek</i>	529
PRELIMINARY REPORT ON THE ARCHAEOLOGICAL SURVEY OF THE JOINT KUWAITI–POLISH MISSION, FAILAKA ISLAND, 2012 <i>Franciszek Pawlicki</i>	547
FAILAKA ARCHAEOLOGICAL RESEARCH PROJECT. PRELIMINARY RESULTS AFTER THE FIRST SEASON OF EXCAVATION AT THE KHARAIB EL-DESHT SITE IN 2013 <i>Agnieszka Pieńkowska</i>	560
APPENDIX 1: KHARAIB EL-DESHT 2013: POTTERY. PRELIMINARY REPORT <i>Marta Mierzejewska</i>	571
APPENDIX 2: SURVEY OF KHARAIB EL-DESHT BAY ON FAILAKA ISLAND: PRELIMINARY REPORT <i>Magdalena Nowakowska</i>	579

IRAQI KURDISTAN

NEWCOMERS AND AUTOCHTHONS. PRELIMINARY REPORT ON 2013 ACTIVITIES IN THE KURDISTAN AUTONOMOUS REGION, IRAQ <i>Dorota Ławecka</i>	591
---	-----

PAM STUDIES

LEVALLOIS TRADITION EPIGONES IN THE MIDDLE NILE VALLEY: SURVEY IN THE AFFAD BASIN <i>Marta Osypińska, Piotr Osypiński</i>	601
ZOOMORPHIC CLAY FIGURINES FROM TELL ARBID. PRELIMINARY REPORT <i>Maciej Makowski</i>	627
PLANT MACROFOSSILS FROM THE SITE OF TELL ARBID, NORTHEAST SYRIA (3RD–2ND MILLENNIUM BC). PRELIMINARY REPORT <i>Aldona Mueller-Bieniek, Krystyna Wasylkowa, Anna Smogorzewska</i>	657
THE ANIMAL ECONOMY OF PEOPLE LIVING IN THE SETTLEMENT OF TELL RAD SHAQRAH (SYRIA) <i>Joanna Piątkowska-Matecka, Rafał Koliński</i>	675

CONTENTS

THE SOLAR ALTAR IN THE TEMPLE OF HATSHEPSUT AT DEIR EL-BAHARI: ARCHITECTURE AND IDEOLOGY <i>Andrzej Ćwiek</i>	693
FAIENCE OBJECTS FROM THE TOMB MMA 1152 AT SHEIKH ABD EL-GURNA <i>Patryk Chudzik, Andrzej Ćwiek</i>	701
INDIAN STEEL: A FORGOTTEN COMMODITY OF THE GREAT TRADE ROUTES <i>Marek Woźniak</i>	709
MONETIZATION OF ROMAN EGYPT DURING THE FLAVIAN DYNASTY (AD 69–96): THE CASE OF ALEXANDRIA AND BERENIKE <i>Katarzyna Lach</i>	727
CROSS-CULTURAL BEAD ENCOUNTERS AT THE RED SEA PORT SITE OF BERENIKE, EGYPT. PRELIMINARY ASSESSMENT (SEASONS 2009–2012) <i>Joanna Then-Obluska</i>	735
A NEW LOOK ON SOME OLD GLASS FINDS FROM PALMYRA <i>Krystyna Gawlikowska</i>	779
NEW INSIGHTS INTO NUBIAN ARCHERY <i>Łukasz Zieliński</i>	791
INDEX OF SITES	803
GUIDELINES FOR AUTHORS	804
PCMA PUBLICATIONS	805

POLISH ARCHAEOLOGY IN THE MEDITERRANEAN (PAM)
Annual of the Polish Centre of Mediterranean Archaeology, University of Warsaw

PAM Editor-in-chief: Iwona Zych

Volume 24/1: Research

All texts peer-reviewed.

<http://www.pcma.uw.edu.pl/en/pam-journal/pam-independent-reviewers/>

Press-reviewing process: Urszula Wicenciak

Bibliographic editor: Aleksandra Zych

Language consultation: Iwona Zych

Technical editor: Iwona Zych

Digital processing: Ewa Czyżewska-Zalewska

Image processing and copyediting assistance: Ewa Czyżewska-Zalewska, Szymon Maślak, Marta Momot, Marek PuszkarSKI, Urszula Wicenciak

Original graphic design: Jerzy Kowalski, updated by Ewa Czyżewska-Zalewska for PCMA

DTP: Ewa Czyżewska-Zalewska, assisted by Agnieszka Dzwonek

Cover: Tumulus SB 100 from the Al-Subiyah region of Kuwait during exploration
(Photo M. Makowski)

ISSN 1234–5415 (Print), ISSN 2083–537X (Online)

© Polish Centre of Mediterranean Archaeology, University of Warsaw, Warszawa 2015

© Wydawnictwa Uniwersytetu Warszawskiego, Warszawa 2015

All rights reserved. No part of this publication may be reproduced or transmitted in any form or by any means, electronic or mechanical, including photocopying, recording, or any information storage and retrieval system, without permission in writing from the Polish Centre of Mediterranean Archaeology of the University of Warsaw.

Polish Centre of Mediterranean Archaeology, University of Warsaw

00-497 Warszawa, Poland, ul. Nowy Świat 4

e-mail: pam.pcma@uw.edu.pl

www.pcma.uw.edu.pl

Orders can be placed c/o Agnieszka Pieńkowska

a.pienkowska@uw.edu.pl

University of Warsaw Press

00-497 Warszawa, Poland, ul. Nowy Świat 4

www.wuw.pl; e-mail: wuw@uw.edu.pl

Internet Bookshop: www.wuw.pl/ksiegarnia

Printed in Poland

POLISH ARCHAEOLOGY IN THE MEDITERRANEAN

Published annually since 1990



PAM XXIV/1 Research

REPORTS

Fieldwork projects carried out by PCMA teams in the Ancient Near East and Africa

- scope: archaeological, geophysical, restoration and study work
- areas of interest: Egypt, Sudan, Cyprus, Syria, Lebanon, Kuwait, Iraq
- timespan: ten millennia from prehistory and protohistory through the medieval period

STUDIES

- archaeological, architectural and material research within the fields of study covered by PCMA fieldwork

PAM XXIV/2 Special Studies

Deir el-Bahari Studies

Editor Zbigniew E. Szafrński

Volume dedicated to research on specific egyptological and archaeological themes resulting from the ongoing work of the Polish conservation and restoration project in the Temple of Queen Hatshepsut in Deir el-Bahari (West Thebes, Luxor, Egypt). The 11 contributions included in this book concern mostly a later phase in the occupation of the complex, in the Third Intermediate Period (11th–8th century BC), when the abandoned temple was reused as a burial ground. A few of the articles refer to the original architectural form and decoration of the temple from the times of Hatshepsut (15th century BC). Also included is an article on tombs of three other queens of the Eighteenth Dynasty in the Valley of the Kings.

Available as full texts on-line at www.pcma.uw.edu.pl

PAM volumes 17 to the present available on-line from www.ceeol.com

Information and orders:

www.pcma.uw.edu.pl

pcma@uw.edu.pl

pam.pcma@uw.edu.pl

www.wuw.pl/ksiegarnia

RESEARCH

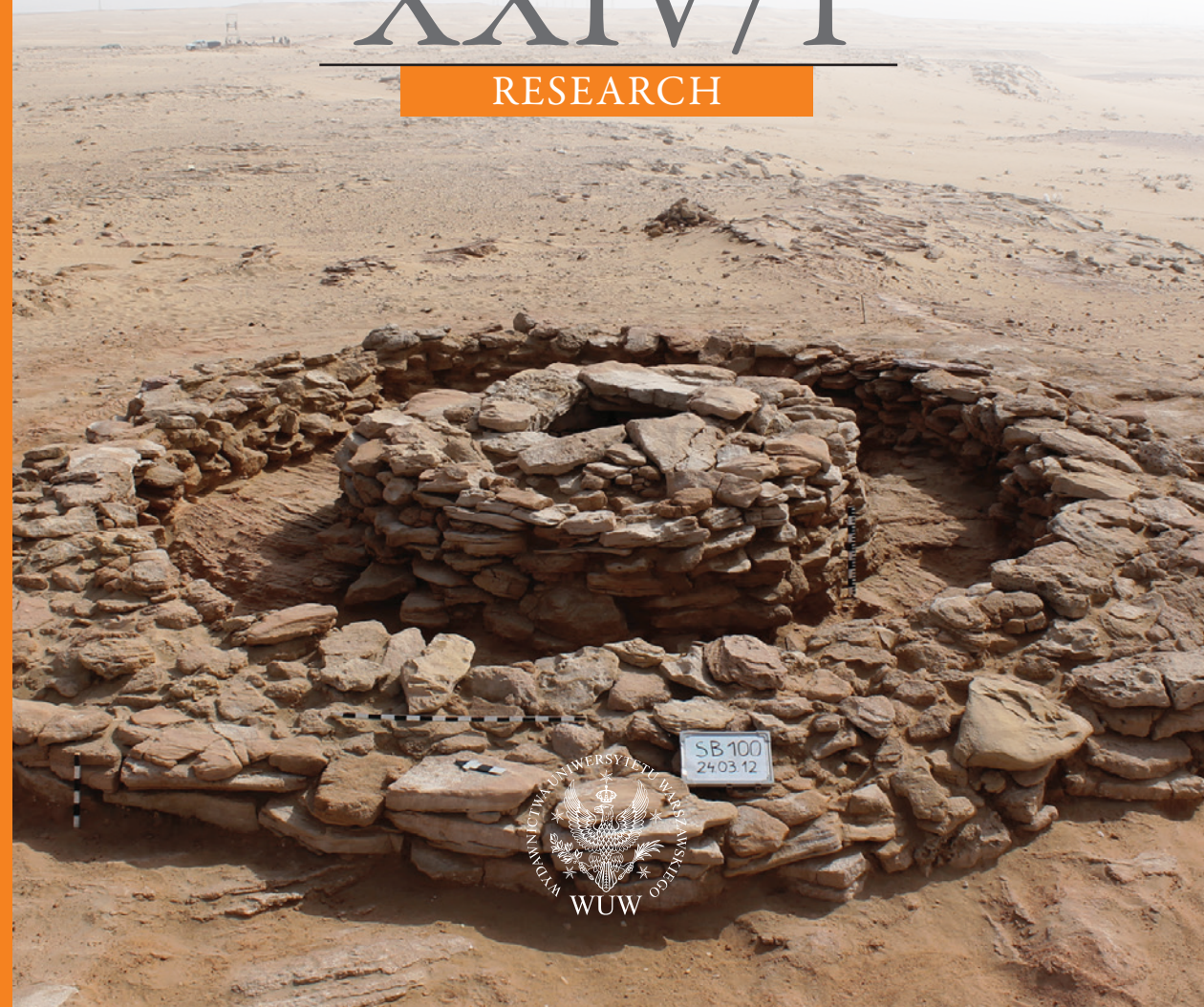
PAM XXIV/1

POLISH CENTRE OF MEDITERRANEAN ARCHAEOLOGY
UNIVERSITY OF WARSAW

POLISH ARCHAEOLOGY IN THE MEDITERRANEAN

XXIV/1

RESEARCH



Polish Centre of
Mediterranean Archaeology

